

WAAS CH <b>62818</b> <b>W09A</b>	APP CRS <b>092°</b>	Rwy Idg <b>8817</b> TDZE <b>482</b> Apr Elev <b>491</b>
--	------------------------	---

# RNAV (GPS) RWY 9

NEW YORK STEWART INTL (SWF)

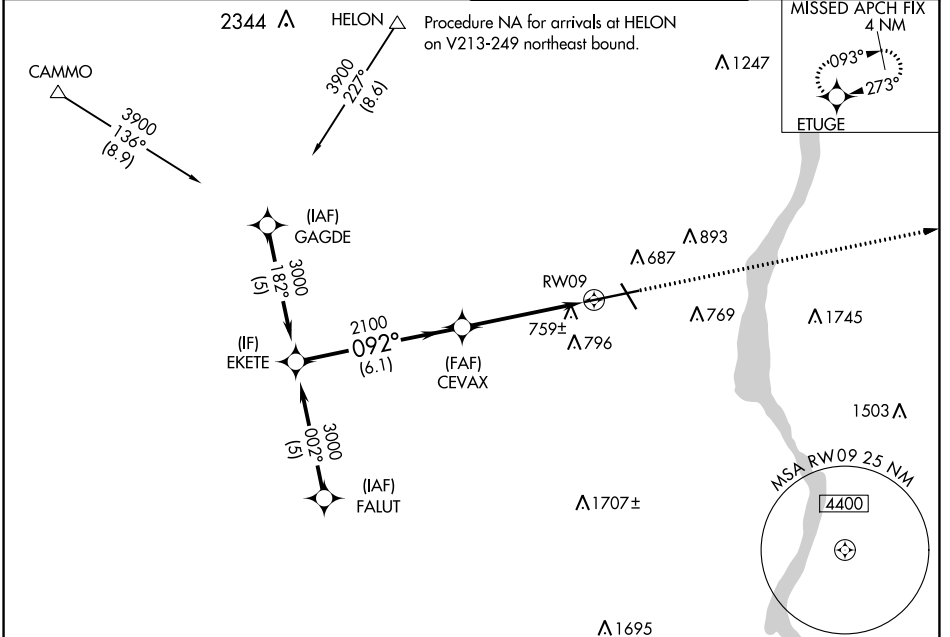
RNP APCH.

**⚠** Inop table does not apply to LNAV/VNAV. For uncompensated Baro-VNAV systems, LNAV/VNAV NA below -15°C or above 54°C.



MISSED APPROACH: Climb to 3100 direct ETUGE and hold.

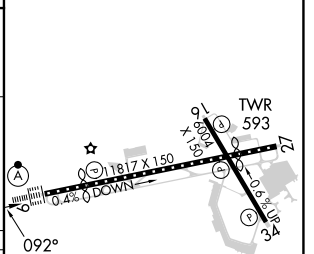
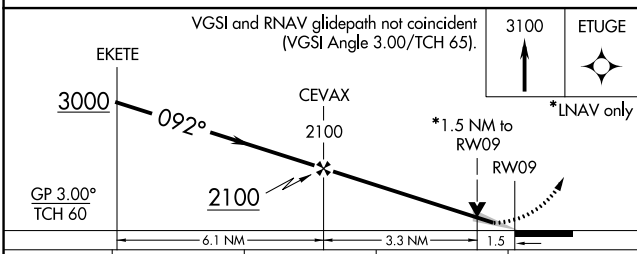
ATIS <b>124.575</b>	NEW YORK APP CON <b>132.75 363.1</b>	STEWART TOWER <b>121.0 254.4</b>	GND CON <b>121.9</b>
------------------------	---	-------------------------------------	-------------------------



NE-2, 13 JUN 2024 to 11 JUL 2024

NE-2, 13 JUN 2024 to 11 JUL 2024

ELEV 491	<b>D</b>	TDZE 482
----------	----------	----------



CATEGORY	A	B	C	D
LPV DA		682/24	200 (200-½)	
LNAV/DA VNAV		1098-2	616 (700-2)	
LNAV MDA	1020/24	538 (600-½)	1020/55 538 (600-1)	1020/60 538 (600-¼)
<b>C</b> CIRCLING	1200-1	709 (800-1)	1200-2 709 (800-2)	1200-2¼ 709 (800-2¼)

TDZ/CL Rwy 9  
HIRL Rwy 9-27 and 16-34  
REIL Rwy 16, 27 and 34