

(SAYBR3.SAYBR) 21112

AL-502 (FAA)

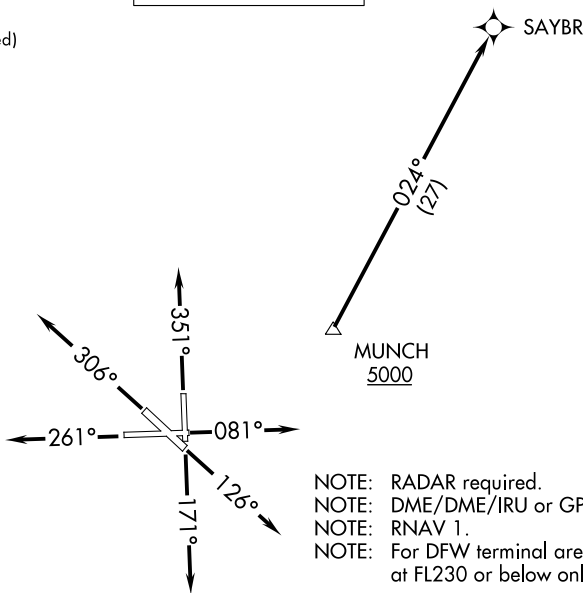
SAN MARCOS RGNL (HYI)

SAYBR THREE DEPARTURE (RNAV)

AUSTIN, TEXAS

ATIS ★
 120.825
 CLNC DEL
 120.125
 CLNC DEL (When twr closed)
 121.35
 GND CON
 120.125
 SAN MARCOS TOWER ★
 126.825
 AUSTIN DEP CON
 119.0 370.85

**TOP ALTITUDE:
 ASSIGNED BY ATC**



NOTE: RADAR required.
 NOTE: DME/DME/IRU or GPS required.
 NOTE: RNAV 1.
 NOTE: For DFW terminal area arrivals at FL230 or below only.

TAKEOFF MINIMUMS

Rwys 8, 13, 17, 26: Standard.
 Rwy 31: Standard with minimum climb of 210' per NM to 2600.
 Rwy 35: Standard with minimum climb of 230' per NM to 2600.

NOTE: Chart not to scale.

DEPARTURE ROUTE DESCRIPTION

TAKEOFF RUNWAY 8: Climb on heading 081° or as assigned by ATC for vectors to cross MUNCH at of above 5000, thence....
TAKEOFF RUNWAY 13: Climb on heading 126° or as assigned by ATC for vectors to cross MUNCH at of above 5000, thence....
TAKEOFF RUNWAY 17: Climb on heading 171° or as assigned by ATC for vectors to cross MUNCH at of above 5000, thence....
TAKEOFF RUNWAY 26: Climb on heading 261° or as assigned by ATC for vectors to cross MUNCH at of above 5000, thence....
TAKEOFF RUNWAY 31: Climb on heading 306° or as assigned by ATC for vectors to cross MUNCH at of above 5000, thence....
TAKEOFF RUNWAY 35: Climb on heading 351° or as assigned by ATC for vectors to cross MUNCH at of above 5000, thence....

... on track 024° to SAYBR. Maintain altitude assigned by ATC.
 Expect filed altitude 10 minutes after departure.

SAYBR THREE DEPARTURE (RNAV)

(SAYBR3.SAYBR) 22APR21

AUSTIN, TEXAS

SAN MARCOS RGNL (HYI)

SC-3, 13 JUN 2024 to 11 JUL 2024

SC-3, 13 JUN 2024 to 11 JUL 2024