

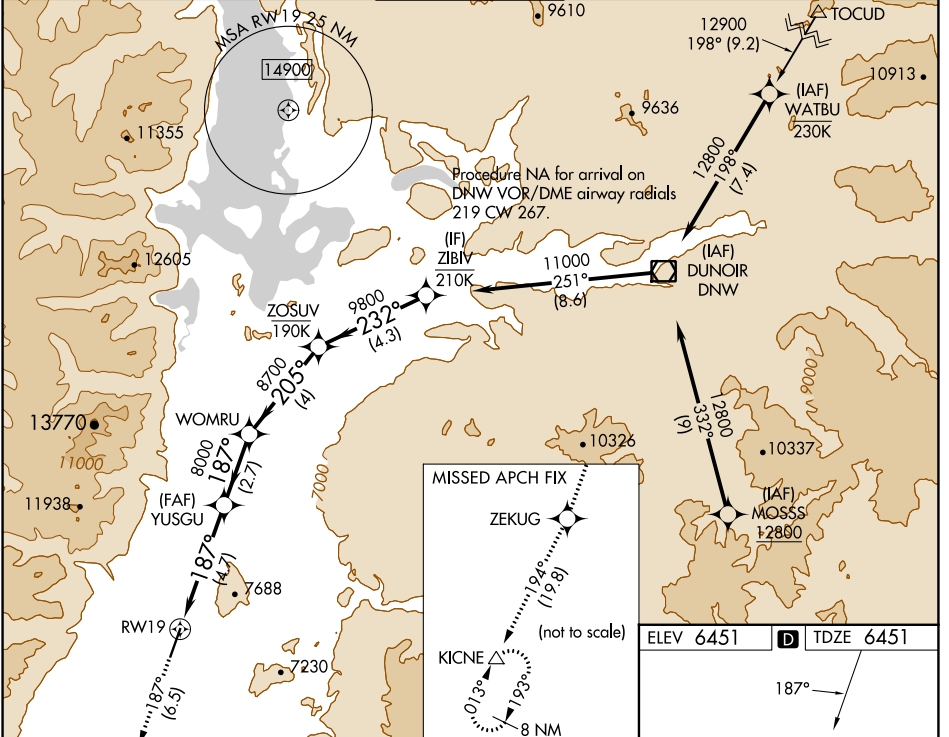
APP CRS	Rwy Idg	6300
187°	TDZE	6451
	Apt Elev	6451

RNAV (RNP) Y RWY 19

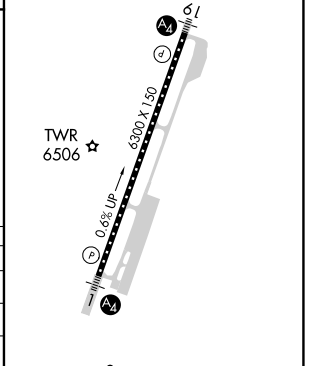
JACKSON HOLE (JAC)

RNP AR APCH-GPS.	MALS	MISSED APPROACH: Climb to 14000 on track 187° to ZEKUG and on track 194° to KICNE and hold, continue climb-in-hold to 14000. *Missed approach requires minimum climb of 226 feet per NM to 11400. #Missed approach requires minimum climb of 210 feet per NM to 11600.
▼ For uncompensated Baro-VNAV systems, procedure NA below -27°C or above 54°C. For inop ALS, increase RNP 0.30 all Cats visibility to 1 3/4 SM.	☁	

D-ATIS	SALT LAKE CENTER	JACKSON TOWER*	GND CON	UNICOM
120.625	133.25 285.6	118.075 (CTAF) 0	124.55	122.95



14000	ZEKUG	KICNE	WOMRU		ZOSUV	ZIBIV
↑ tr 187°	✧ tr 194°	△				
			YUSGU			
			8000		8700	11000
			8000		9800	
			8000			GP 3.00° TCH 50
			4.7 NM		2.7 NM	4 NM
			4.3 NM			
CATEGORY	A	B	C	D		
RNP 0.11 DA*	6781/40		330 (400-3/4)			
RNP 0.30 DA#	6935/60		484 (500-1 1/4)			
RNP 0.30 DA	7038-1 3/8		587 (600-1 1/8)			



AUTHORIZATION REQUIRED

NW-1, 13 JUN 2024 to 11 JUL 2024

NW-1, 13 JUN 2024 to 11 JUL 2024

CL Rwy 1-19 **0**
HIRL Rwy 1-19 **0**