

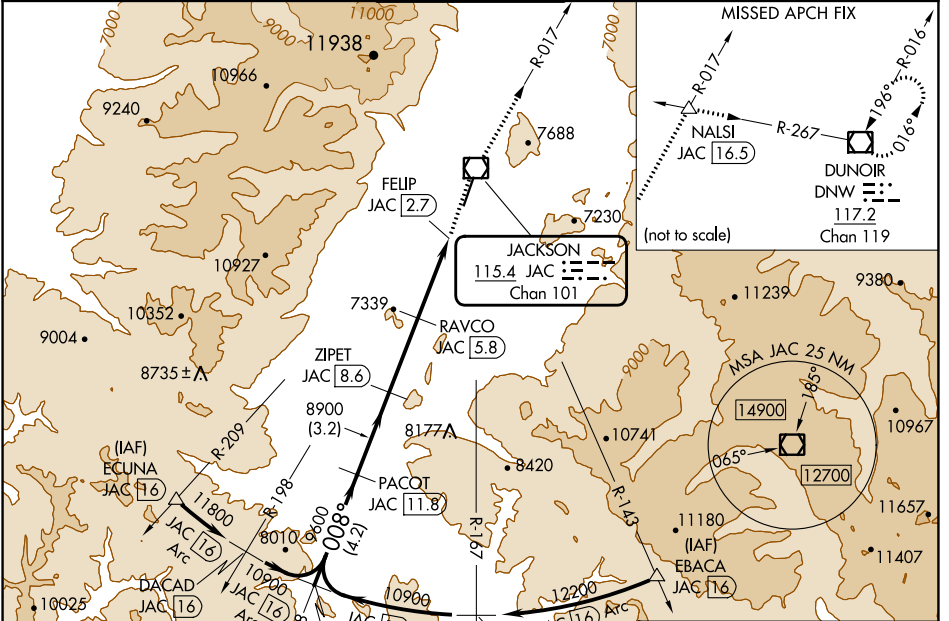
VOR/DME JAC	APP CRS	Rwy ldg TDZE	6300
115.4	008°	6431	
Chan 101		Apt Elev	6451

VOR RWY 1

JACKSON HOLE (JAC)

DME required.	MALS	MISSED APPROACH: Climb to 14000 direct JAC VOR/DME and on JAC R-017 to NALSI INT/JAC 16.5 DME and right turn on DNW R-267 to DNW VOR/DME and hold, continue climb-in-hold to 14000.
<p>⚠ Circling NA east of Rwy 1-19. Circling NA for Cat D. Inop table does not apply to S-1</p> <p>❄ -22°C</p>		

D-ATIS	SALT LAKE CENTER	JACKSON TOWER*	GND CON	UNICOM
120.625	133.25 285.6	118.075 (CTAF)	124.55	122.95

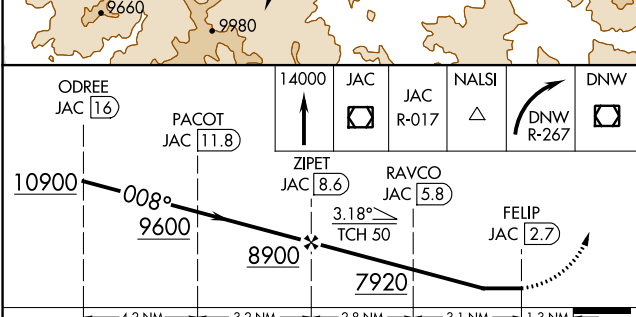


NW-1, 13 JUN 2024 to 11 JUL 2024

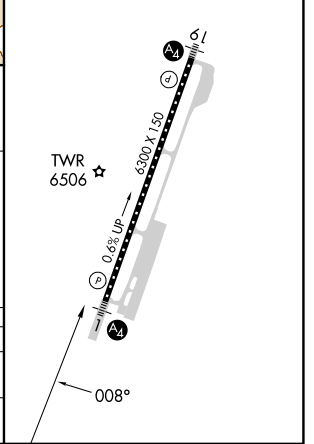
NW-1, 13 JUN 2024 to 11 JUL 2024

ELEV 6451		TDZE 6431
-----------	--	-----------

CL Rwy 1-19	HIRL Rwy 1-19
-------------	---------------



CL Rwy 1-19	TDZE 6431
HIRL Rwy 1-19	



CATEGORY	A	B	C	D
S-1	7800-55 1369 (1400-1)	7800-1¼ 1369 (1400-1¼)	7800-3 1369 (1400-3)	
CIRCLING	7800-1¼ 1349 (1400-1¼)	7800-1½ 1349 (1400-1½)	7800-3 1349 (1400-3)	NA