

LOC I-SBD 109.3	APP CRS 057°	Rwy Idg 10000 TDZE 1103 Apt Elev 1159
---------------------------	------------------------	--

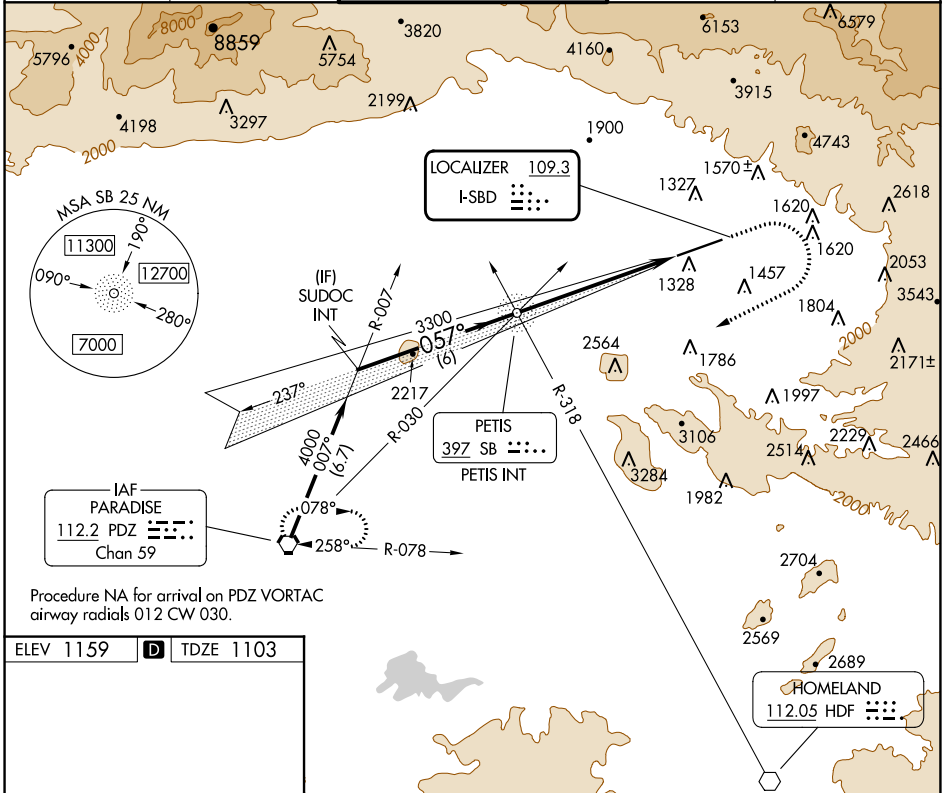
LOC Y RWY 6

SAN BERNARDINO INTL (SBD)

⚠ Circling NA northwest of Rwy 6-24. When local altimeter not received, use Ontario altimeter setting and increase all MDA 80 feet; increase S-LOC Cat B and Circling Cat B visibility ¼ SM.

MISSED APPROACH: Climb to 2700 then climbing right turn to 6000 direct PDZ VORTAC and hold, continue climb-in-hold to 6000.

D-ATIS 124.175	SOCAL APP CON 127.0 318.2	SAN BERNARDINO TOWER* 119.45 (CTAF) 0	GND CON 121.8	UNICOM 122.975
--------------------------	-------------------------------------	---	-------------------------	--------------------------



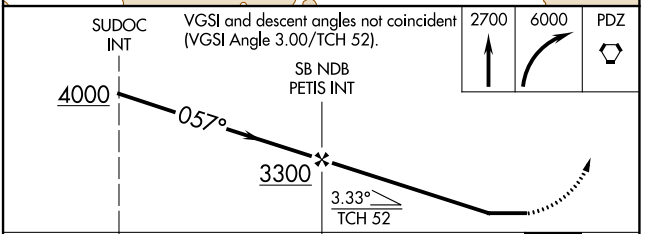
ELEV 1159 **D** TDZE 1103

HIRL Rwy 6-24 **0**
REIL Rwy 6 and 24 **0**

FAF to MAP 6.1 NM

Knots	60	90	120	150	180
Min:Sec	6:06	4:04	3:03	2:26	2:02

C CIRCLING



CATEGORY	A	B	C	D
S-6	2020-1¼	917 (900-1¼)	2060-3	957 (1000-3)
C CIRCLING	2020-1¼	861 (900-1¼)	2060-3 901 (1000-3)	2640-3 1481 (1500-3)

SW-3, 13 JUN 2024 to 11 JUL 2024

SW-3, 13 JUN 2024 to 11 JUL 2024