

WAAS CH <b>81826</b> <b>W10B</b>	APP CRS <b>101°</b>	Rwy Idg TDZE Apt Elev	<b>10502</b> <b>1203</b> <b>1203</b>
--	------------------------	-----------------------------	--

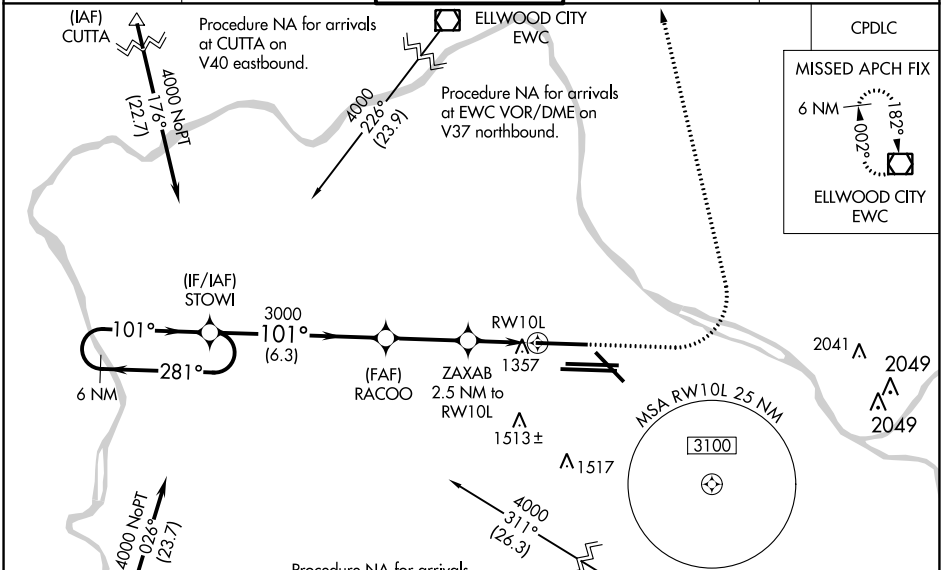
# RNAV (GPS) RWY 10L

PITTSBURGH INTL (PIT)

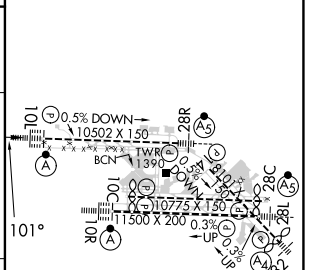
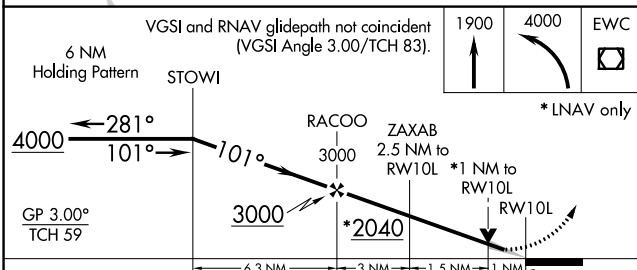
**⚠** For uncompensated Baro-VNAV systems, LNAV/VNAV NA below -18°C (0°F) or above 54°C (130°F). Simultaneous approach authorized.  
**⚠** DME/DME RNP-0.3 NA. For inop ALS, increase LNAV Cats C/D visibility to RVR 6000. LNAV procedure NA during simultaneous operations. Use of FD or AP required during simultaneous operations.

ALSF-2 MISSED APPROACH: Climb to 1900 then climbing left turn to 4000 direct EWC VOR/DME and hold.

D-ATIS ARR <b>127.25</b> DEP <b>135.9</b>	PITTSBURGH APP CON <b>123.95 360.8</b>	PITTSBURGH TOWER <b>128.3 291.7</b>	GND CON SOUTH <b>121.9 348.6</b> NORTH <b>127.8 348.6</b>	CLNC DEL <b>126.75 353.7</b>
---	---	--	---	---------------------------------



ELEV 1203	<b>D</b> TDZE 1203
-----------	--------------------



CATEGORY	A	B	C	D
LPV DA		1403/18	200 (200-½)	
LNAV/VNAV DA		1635/40	432 (500-¾)	
LNAV MDA	1620/24	417 (500-½)	1620/40	417 (500-¾)
<b>C</b> CIRCLING	1700-1	497 (500-1)	1880-2 677 (700-2)	1880-2¼ 677 (700-2¼)

REIL Rwy 10C  
HIRL all Rwys  
TDZ/CL Rwys 10L, 10R, 28L, 28R,  
28C, and 32

NE-4, 13 JUN 2024 to 11 JUL 2024