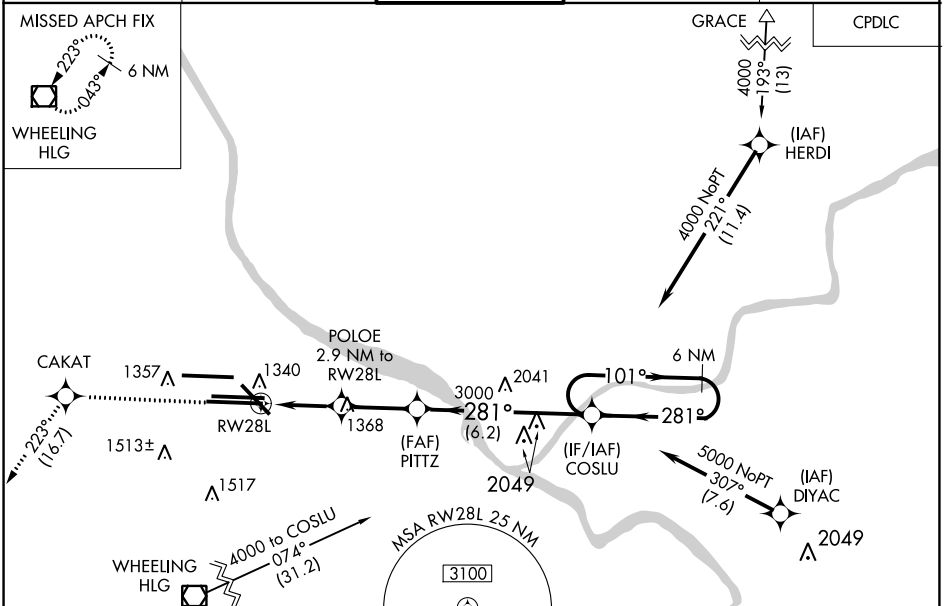


WAAS CH 97326 W28B	APP CRS 281°	Rwy Idg TDZE Apt Elev	11500 1125 1203
--	------------------------	-----------------------------	--

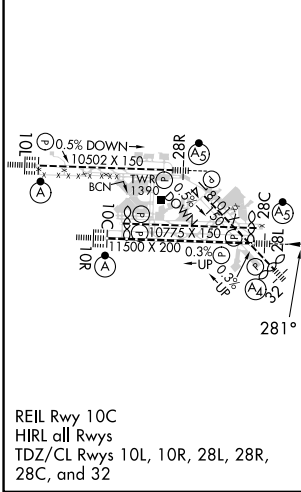
RNAV (GPS) Y RWY 28L

PITTSBURGH INTL (PIT)

RNP APCH - GPS		PITTSBURGH APP CON		PITTSBURGH TOWER		GND CON		CLNC DEL			
<p>▼ For uncompensated Baro-VNAV systems, LNAV/VNAV NA below -18°C or above 54°C. For inop ALS, increase LNAV Cats C/D visibility to 1 3/8 SM. LNAV procedure NA during simultaneous operations. Use of FD or AP required during simultaneous operations.</p>		ARR 127.25 DEP 135.9		123.95 360.8		128.3 291.7		SOUTH 121.9 348.6 NORTH 127.8 348.6		126.75 353.7	



ELEV 1203	D	TDZE 1125
------------------	----------	------------------



4000	CAKAT	tr 223°	HLG	VGSI and RNAV glidepath not coincident (VGSI Angle 3.00/TCH 70).		6 NM
* LNAV only.		POLOE 2.9 NM to RW28L	PITZ 3000	COSLU	101°	4000
		* 1.3 NM to RW28L	* 2080	3000	281°	GP 3.00° TCH 54
		1.3	1.6 NM	2.8 NM	6.2 NM	
CATEGORY	A	B	C	D		
LPV DA	1325/18		200 (200-1/2)			
LNAV/VNAV DA	1549/40		424 (400-3/4)			
LNAV MDA	1600/24 475 (400-1/2)		1600/50 475 (400-1)			
<input checked="" type="checkbox"/> CIRCLING	1700-1 497 (500-1)		1880-2 677 (700-2)		1880-2 1/4 677 (700-2 1/4)	

NE-4, 13 JUN 2024 to 11 JUL 2024

NE-4, 13 JUN 2024 to 11 JUL 2024