

LOM PI	APP CRS	Rwy Idg	10104
356	309°	TDZE	650
		Apt Elev	661

NDB RWY 31

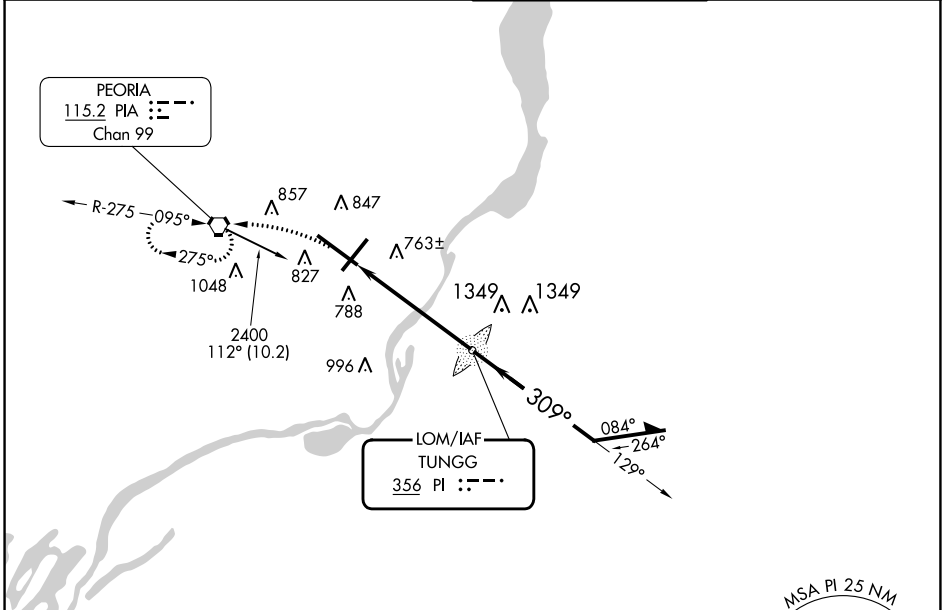
GENERAL DOWNING-PEORIA INTL (PIA)

⚠ For inop ALS, increase S-31 Cat A/B visibility to RVR 5500, and Cat C/D to 1 3/8 SM. When local altimeter setting not received, use Logan County altimeter setting and increase all MDA 100 feet, increase S-31 Cat C and D visibility 1/4 mile, and Circling Cat C 1/4 mile and Cat D 1/2 mile. Circling Rwy 13, 31 NA at night.



MISSED APPROACH: Climbing left turn 2400 direct PIA VORTAC and hold.

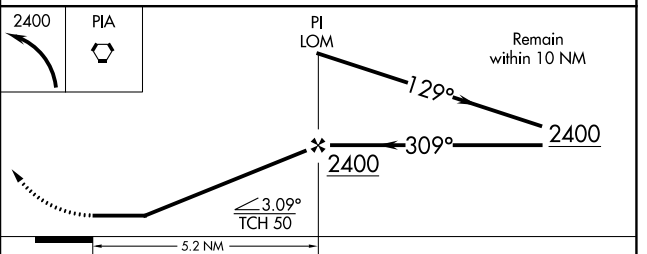
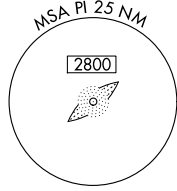
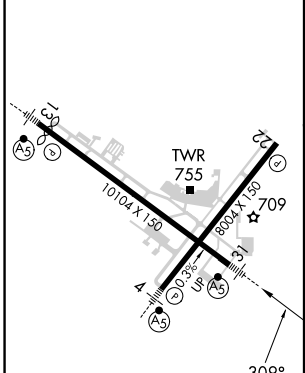
ATIS 126.1 282.2	SAINT LOUIS APP CON 125.8 269.2	PEORIA TOWER 124.0 353.85	GND CON 121.85 348.6
----------------------------	---	-------------------------------------	--------------------------------



EC-3, 13 JUN 2024 to 11 JUL 2024

EC-3, 13 JUN 2024 to 11 JUL 2024

ELEV 661	D	TDZE 650
----------	----------	----------



HIRL Rwy's 4-22 and 13-31					
FAF to MAP 5.2 NM					
Knots	60	90	120	150	180
Min:Sec	5:12	3:28	2:36	2:05	1:44

CATEGORY	A	B	C	D
S-31	1140/40	490 (500-3/4)	1140/50	490 (500-1)
<input checked="" type="checkbox"/> CIRCLING	1160-1	499 (500-1)	1180-1 1/2 519 (600-1 1/2)	1400-2 1/4 739 (800-2 1/4)