

| | | |
|---|------------------------|---|
| VORTAC SGF 116.9 Chan 116 | APP CRS 196° | Rwy Idg 7003 TDZE 1262 Apt Elev 1268 |
|---|------------------------|---|

VOR or TACAN RWY 20

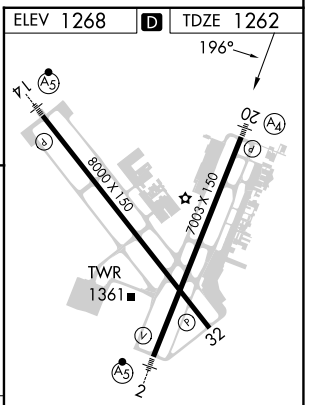
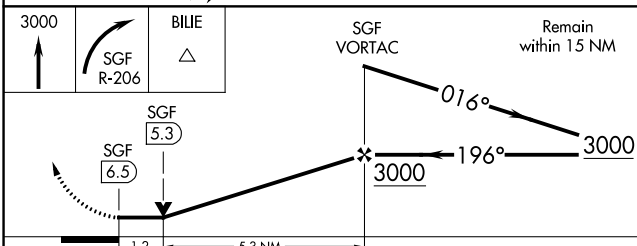
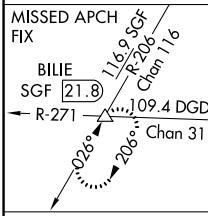
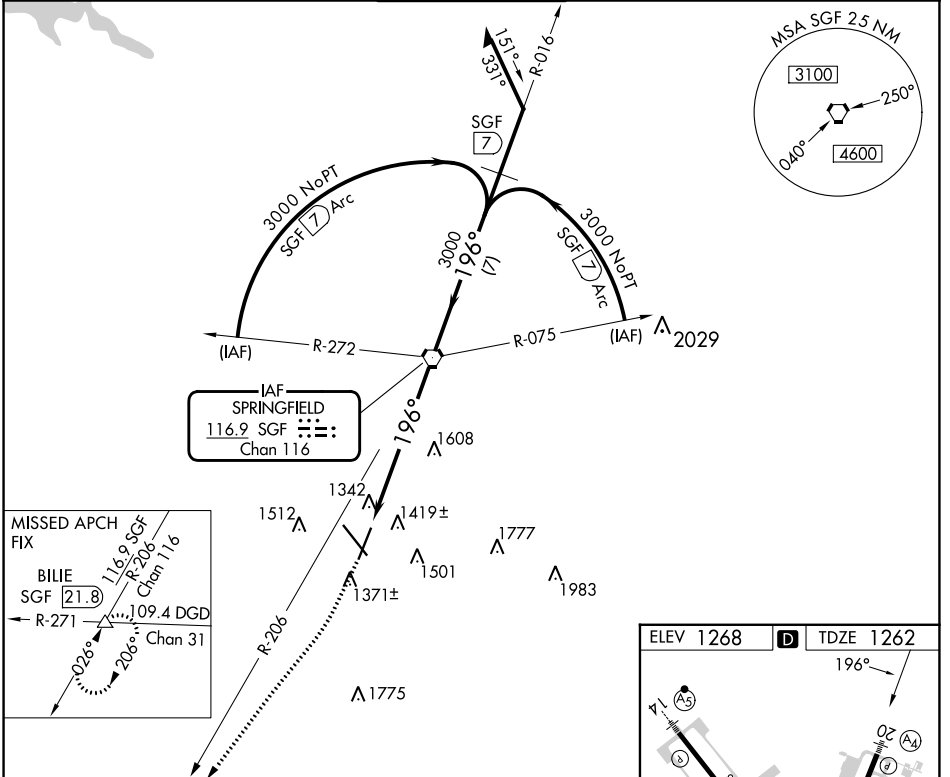
SPRINGFIELD-BRANSON NTL (SGF)

⚠ Inoperative table does not apply to Cat C. Helicopter visibility reduction below 3/4 SM not authorized. When local altimeter setting not received, use Monett altimeter setting and increase all MDA 100 feet, increase S-20 Cat C/D/E visibility 1/4 mile, increase Circling Cat C/E visibility 1/4 mile. VDP NA when using Monett altimeter setting.

MALS $(A_4) = \equiv$

MISSED APPROACH: Climb to 3000 then right turn to intercept SGF R-206 to BILIE INT/SGF 21.8 DME and hold.

| | | | | |
|------------------------|--|---|--------------------------------|----------------------------|
| ATIS 135.125 | SPRINGFIELD APP CON 124.95 290.5 | SPRINGFIELD TOWER 119.9 257.8 | GND CON 121.9 251.15 | CLNC DEL 123.675 |
|------------------------|--|---|--------------------------------|----------------------------|



| CATEGORY | A | B | C | D | E |
|----------|------------------------|--------------------|----------------------------|----------------------------|--------------------|
| S-20 | 1700-3/4 438 (500-3/4) | | 1700-1 1/4 438 (500-1 1/4) | 1700-1 1/2 438 (500-1 1/2) | |
| CIRCLING | 1760-1 492 (500-1) | 1820-1 552 (600-1) | 1820-1 1/2 552 (600-1 1/2) | 1920-2 652 (700-2) | 2080-3 812 (900-3) |

| | | | | | |
|-------------------|-------------------------|------|------|------|------|
| REIL Rwy 32 | HRL Rlys 2-20 and 14-32 | | | | |
| FAF to MAP 6.5 NM | | | | | |
| Knots | 60 | 90 | 120 | 150 | 180 |
| Min:Sec | 6:30 | 4:20 | 3:15 | 2:36 | 2:10 |

NC-3, 13 JUN 2024 to 11 JUL 2024

NC-3, 13 JUN 2024 to 11 JUL 2024