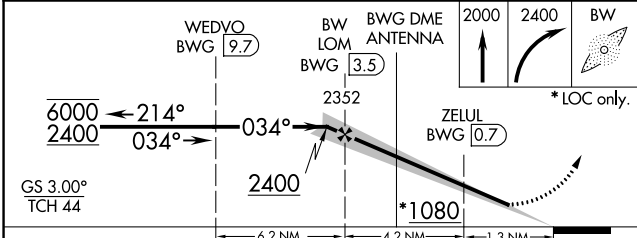
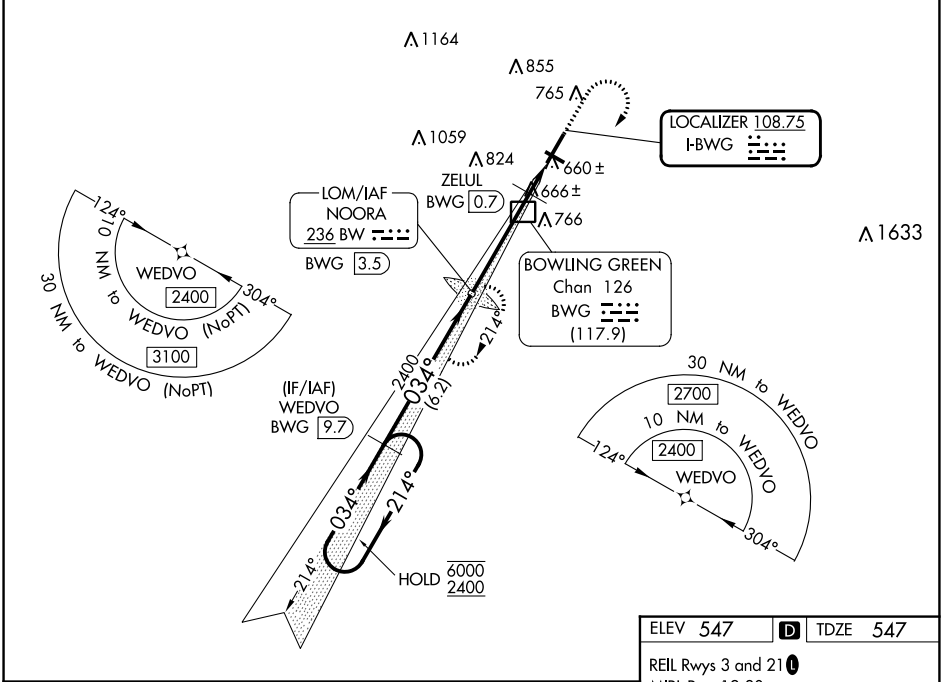


LOC I-BWG	APP CRS	Rwy Idg	6500
108.75	034°	TDZE	547
		Apt Elev	547

ILS Z or LOC Z RWY 3

BOWLING GREEN-WARREN COUNTY RGNL (BWG)

RNAV 1-GPS required.		MISSED APPROACH: Climb to 2000 then climbing right turn to 2400 direct NOORA LOM and hold.	
ASOS	MEMPHIS CENTER	UNICOM	
127.825	133.85 317.6	123.0 (CTAF) 0	



ELEV 547	D	TDZE 547			
REIL Rwy 3 and 21 0					
MIRL Rwy 12-30					
HIRL Rwy 3-21 0					
FAF to MAP 5.5 NM					
Knots	60	90	120	150	180
Min:Sec	5:30	3:40	2:45	2:12	1:50

CATEGORY	A	B	C	D
S-ILS 3	747- ³ / ₄ 200 (200- ³ / ₄)			
S-LOC 3	1080-1	533 (600-1)	1080-1 ¹ / ₂	533 (600-1 ¹ / ₂)
CIRCLING	1080-1	1120-1	1160-1 ³ / ₄	1200-2
	533 (600-1)	573 (600-1)	613 (700-1 ³ / ₄)	653 (700-2)
ZELUL FIX MINIMUMS **				
S-LOC 3	920-1 373 (400-1)			
CIRCLING	1000-1	1120-1	1160-1 ³ / ₄	1200-2
	453 (500-1)	573 (600-1)	613 (700-1 ³ / ₄)	653 (700-2)

SE-1, 13 JUN 2024 to 11 JUL 2024

SE-1, 13 JUN 2024 to 11 JUL 2024