


LOC I-IAG 110.1	APP CRS 280°	Rwy ldg TDZE Apt Elev	9129 588 592
---------------------------	------------------------	-----------------------------	---

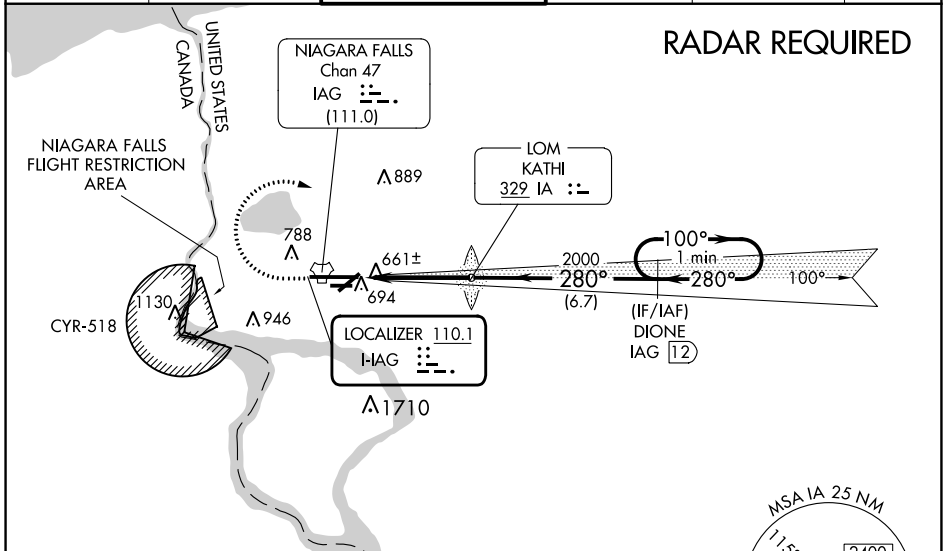
ILS Z or LOC Z RWY 28R

NIAGARA FALLS INTL (IAG)

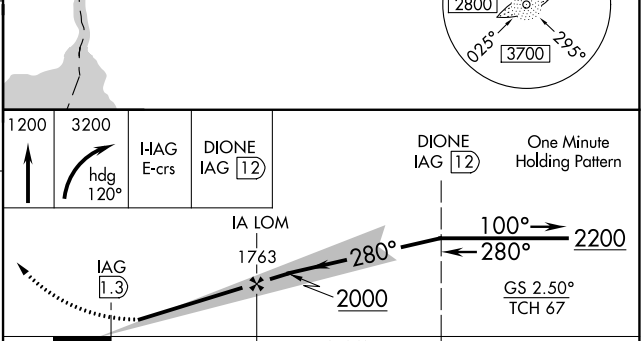
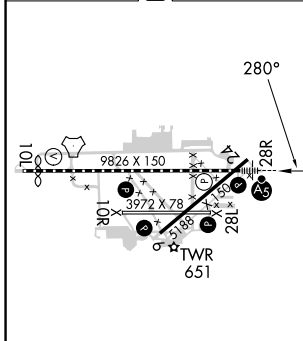
⚠ When local altimeter setting not received, use Buffalo Niagara Intl altimeter setting and increase all DA 51 feet and all MDA 60 feet; increase Circling Cat C and D visibility ¼ SM. For inop MALSRL, increase S-ILS 28R all Cats visibility to RVR 4500 and S-LOC 28R all Cats visibility to RVR 5000. For inop MALSRL when using Buffalo Niagara Intl altimeter setting, increase S-ILS 28R all Cats visibility to RVR 4500, S-LOC 28R Cats A/B visibility to RVR 5000, and S-LOC 28R Cats C/D visibility to RVR 6000. DME required. Rwy 28R helicopter visibility reduction below ¾ SM NA. Rwy 6, 10R, 24, 28L, helicopter visibility reduction below 1 SM NA. Circling Rwy 6, 10R, 24, 28L NA at night.

MALSRL

MISSED APPROACH: Climb to 1200 then climbing right turn to 3200 on heading 120° and I-HAG E course to DIONE/IAG 12 DME and hold.

ATIS 120.8 269.4	BUFFALO APP CON 126.5 317.6	NIAGARA TOWER★ 118.5 (CTAF) 0 349.0	GND CON 125.3 275.8	CLNC DEL 119.25 251.1	UNICOM 122.95
----------------------------	---------------------------------------	---	-------------------------------	---------------------------------	-------------------------



ELEV 592	D	TDZE 588
----------	----------	----------



CATEGORY	A	B	C	D
S-ILS 28R	838/40 250 (300-¾)			
S-LOC 28R	920/40 332 (400-¾)			
C CIRCLING	1100-1	508 (600-1)	1280-2 688 (700-2)	1280-2¼ 688 (700-2¼)

ILS Z or LOC Z RWY 28R

NE-2, 13 JUN 2024 to 11 JUL 2024

NE-2, 13 JUN 2024 to 11 JUL 2024