

WAAS CH 66034 W10A	APP CRS 120°	Rwy ldg TDZE 589 Apt Elev 592
--	------------------------	---

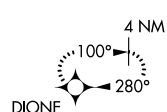
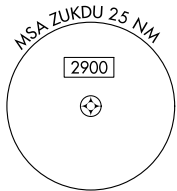
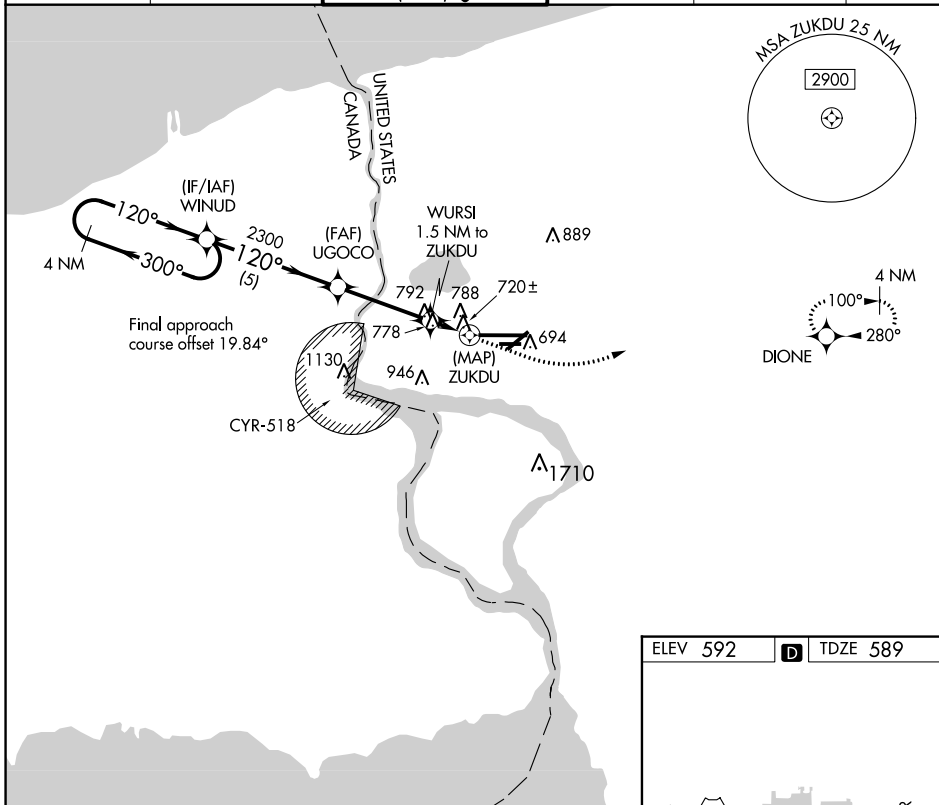
RNAV (GPS) RWY 10L

NIAGARA FALLS INTL (IAG)

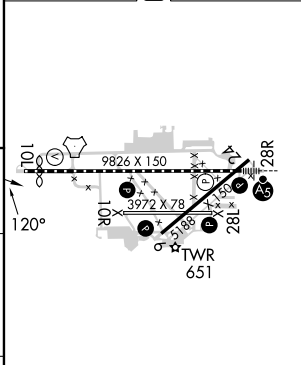
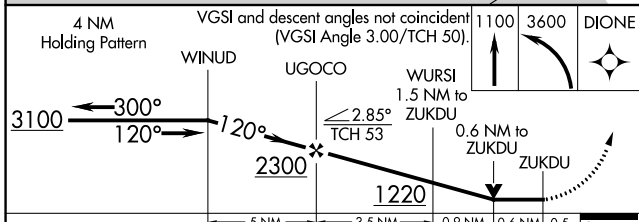
⚠ DME/DME RNP-0.3 NA. VDP NA with Buffalo Niagara Intl altimeter setting. When local altimeter setting not received, use Buffalo Niagara Intl altimeter setting and increase all MDA 60 feet.
⚠ Increase LP Cats C/D and Circling Cats C/D visibility ¼ mile. Rwy 10L helicopter visibility reduction below ¾ SM NA. Rwy 6, 10R, 24, 28L helicopter visibility reduction below 1 SM NA. Circling Rwy 6, 10R, 24, 28L NA at night.

MISSED APPROACH: Climb to 1100 then climbing left turn to 3600 direct DIONE and hold.

ATIS 120.8 269.4	BUFFALO APP CON 126.5 317.6	NIAGARA TOWER ★ 118.5 (CTAF) 0 349.0	GND CON 125.3 275.8	CLNC DEL 119.25 251.1	UNICOM 122.95
----------------------------	---------------------------------------	--	-------------------------------	---------------------------------	-------------------------



ELEV 592	D	TDZE 589
----------	---	----------



CATEGORY	A	B	C	D
LP MDA	980-1	391 (400-1)	980-1 1/8	391 (400-1 1/8)
LNAV MDA	1040-1	451 (500-1)	1040-1 3/8	451 (500-1 3/8)
CIRCLING	1100-1	508 (600-1)	1280-2 688 (700-2)	1280-2 1/4 688 (700-2 1/4)

TDZ/CL Rwy 28R
REIL Rws 6, 10R, 24, and 28L
HIRL Rwy 10L-28R
MRL Rws 6-24 and 10R-28L

NE-2, 13 JUN 2024 to 11 JUL 2024

NE-2, 13 JUN 2024 to 11 JUL 2024