


WAAS CH 97412 W36A	APP CRS 004°	Rwy Idg 5151 TDZE 343 Apt Elev 344
--	------------------------	---

RNAV (GPS) RWY 36

READING RGNL/CARL A SPAATZ FLD (RDG)

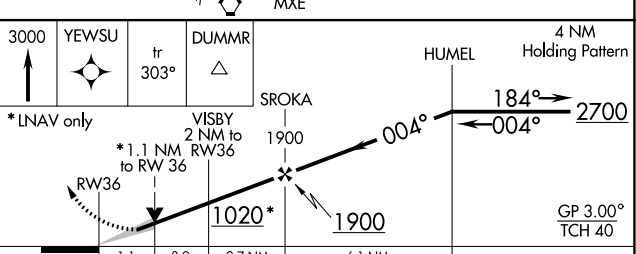
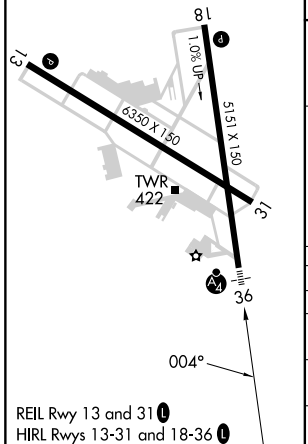
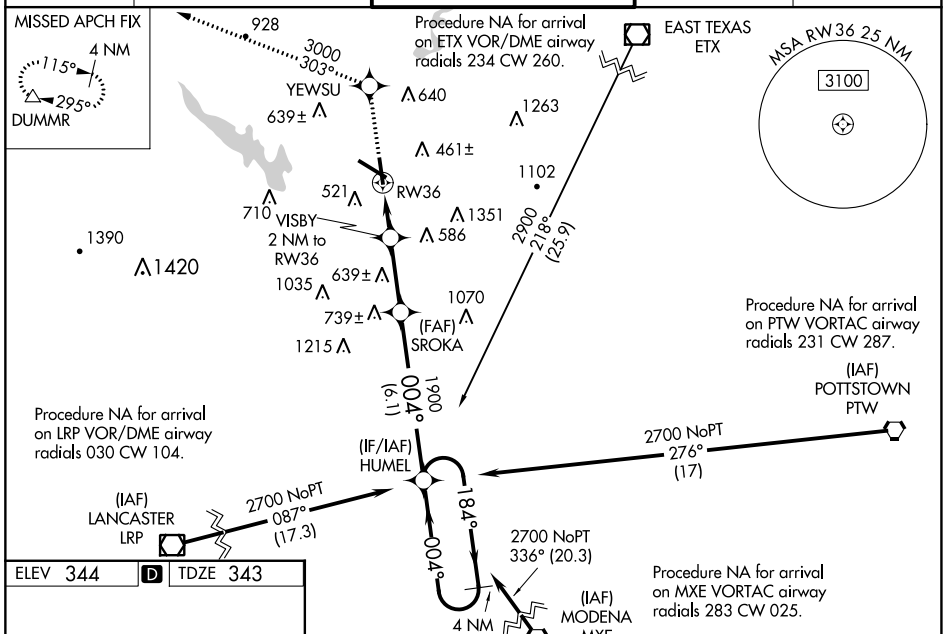
▼ Night landing: Rwy 18, 31 NA. Inoperative table does not apply. Baro-VNAV NA when using Harrisburg Intl altimeter setting. For uncompensated Baro-VNAV systems, LNAV/VNAV NA below -15°C (5°F) or above 48°C (118°F). DME/DME RNP-0.3 NA. When local altimeter setting not received, use Harrisburg Intl altimeter setting and increase LPV DA to 715 feet and visibility ¼ SM, increase LNAV/VNAV DA to 928 feet and visibility ¼ SM and increase all MDAs 100 feet, and LNAV Cats C and D and Circling Cats B and C visibility ¼ SM.

MALSIF



MISSED APPROACH: Climb to 3000 direct YEWSU and via 303° to DUMMR and hold, continue climb-in-hold to 3000.

ATIS 127.1	READING APP CON * 125.15 257.9	READING TOWER * 119.9 (CTAF) 0 288.3	GND CON 121.9	UNICOM 122.95
----------------------	--	--	-------------------------	-------------------------



CATEGORY	A	B	C	D
LPV DA	622-1 279 (300-1)			
LNAV/VNAV DA	835-1¾ 492 (500-1¾)			
LNAV MDA	740-1 397 (400-1)			740-1½ 397 (400-1½)
CIRCLING	1020-1 676 (700-1)	1080-1 736 (800-1)	1280-2¾ 936 (1000-2¾)	1660-3 1316 (1400-3)

NE-4, 13 JUN 2024 to 11 JUL 2024

NE-4, 13 JUN 2024 to 11 JUL 2024