

APP CRS	Rwy ldg	6549
163°	TDZE	439
	Apt Elev	439

RNAV (RNP) Z RWY 16

WESTCHESTER COUNTY (HPN)

RNP AR APCH - GPS.



MISSED APPROACH: Climb to 3000 on track 163° to JIRUN, left turn to KIYBE, then track 353° to CMK VOR/DME and hold.

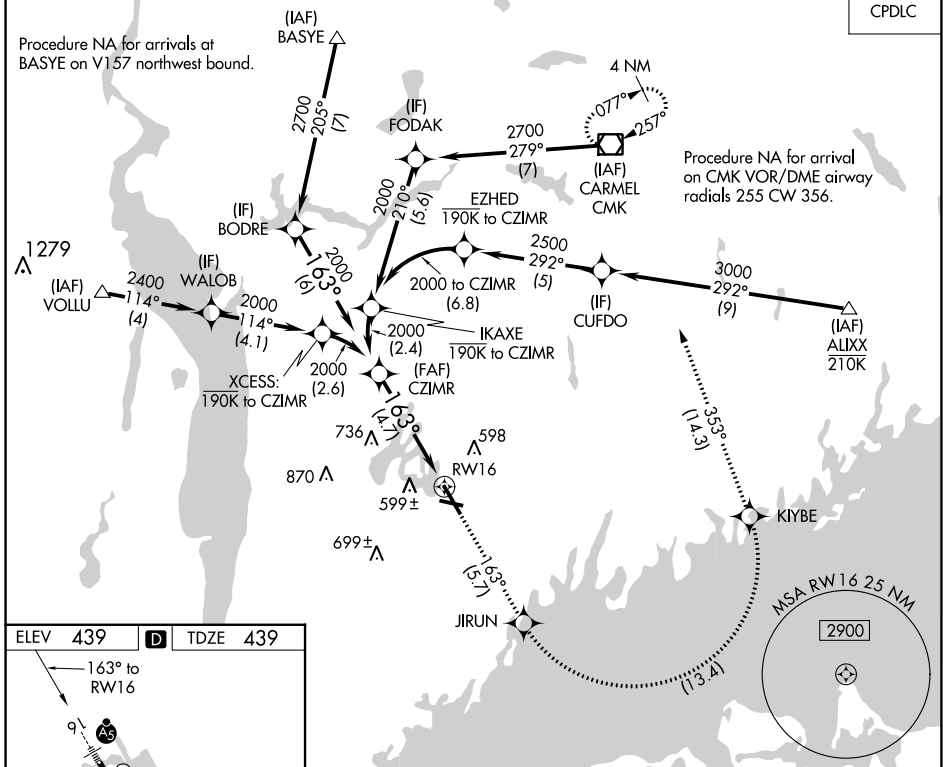
For uncompensated Baro-VNAV systems, procedure NA below -14°C or above 54°C.

D-ATIS	NEW YORK APP CON	WESTCHESTER TOWER ★	GND CON	CLNC DEL	CLNC DEL	UNICOM
133.8	120.8 126.4 257.65	118.575 (CTAF) 0 284.65	121.825	127.25	126.4 (when twr closed)	122.95

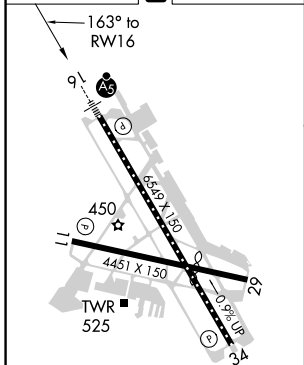
CPDLC

Procedure NA for arrivals at BASYE on V157 northwest bound.

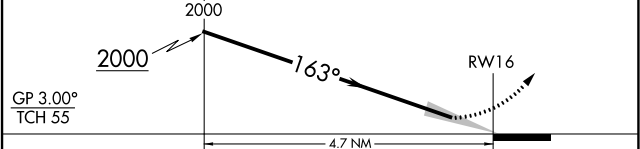
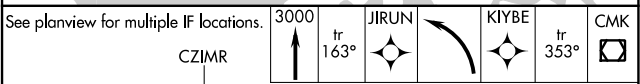
Procedure NA for arrival on CMK VOR/DME airway radials 255 CW 356.



ELEV	439	TDZE	439
------	------------	------	------------



- REIL Rwy 11 and 34
- HIRL Rwy 16-34
- MIRL Rwy 11-29
- TDZ/CL Rwy 16



GP 3.00°	TCH 55				
CATEGORY	A	B	C	D	
RNP 0.15 DA		826/35	387 (400-5%)		
RNP 0.30 DA		950/55	511 (600-1)		

AUTHORIZATION REQUIRED

NE-2, 13 JUN 2024 to 11 JUL 2024

NE-2, 13 JUN 2024 to 11 JUL 2024