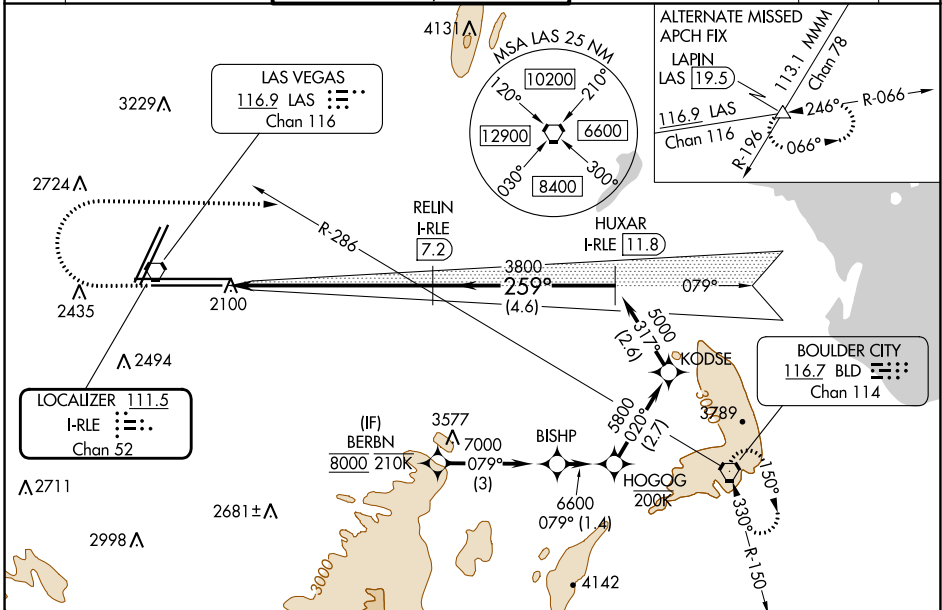


LOC/DME I-RLE 111.5 Chan 52	APP CRS 259°	Rwy Idg	26L	26R
		TDZE	10526	12638
			2069	2067
		Apt Elev	2181	2181

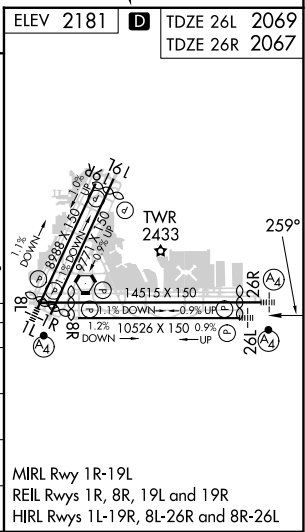
ILS Y or LOC Y RWY 26L

HARRY REID INTL (LAS)

RNP APCH - GPS.	DME required.		MALSF Rwy 26L	MALS Rwy 26R	MISSED APPROACH: Climb to 3200 then climbing right turn to 6000 heading 080° and on BLD R-286 to BLD VORTAC and hold, continue climb-in-hold to 6000.
Inop table does not apply to S-ILS 26L or Sidestep 26R. For inop ALS increase S-LOC 26L Cats C and D visibility to 1 1/8 SM.					
D-ATIS	LAS VEGAS APP CON	LAS VEGAS TOWER	GND CON	CLNC DEL	CPDLC
132.4	125.025 379.15 (West) 119.775 282.2 (East)	118.75 257.8 (Rwy 1L/19R, 1R/19L) 119.9 257.8 (Rwy 8L/26R, 8R/26L)	121.1 270.8 E of 1R/19L 121.9 254.3 W of 1R/19L	118.0	



3200	6000	BLD R-286	BLD	VGSI and ILS glidepath not coincident (VGSI Angle 3.00/TCH 84).	BERBN
hdg 080°		RELIN I-RLE (7.2)	HUXAR I-RLE (11.8)	KODSE	BISHP
I-RLE (1.9)		3800	5000	5800	7000
1.2 NM		4.1 NM	4.6 NM	2.6	2.7
3800		3800	5000	5800	7000
CATEGORY	A	B	C	D	
S-ILS 26L	2269-3/4 200 (100-3/4)				
S-LOC 26L	2520-3/4	451 (400-3/4)	2520-1	451 (400-1)	
SIDESTEP 26R	2560-1	493 (400-1)	2560-1 1/2	2560-2	
CIRCLING	3020-1 1/4	3060-1 1/4	3100-2 3/4	3540-3	
	839 (900-1 1/4)	879 (900-1 1/4)	919 (1000-2 3/4)	1359 (1400-3)	



SW-4, 13 JUN 2024 to 11 JUL 2024

SW-4, 13 JUN 2024 to 11 JUL 2024