

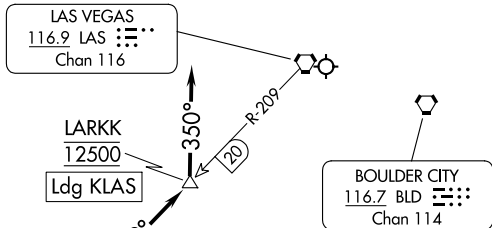
(RNRDZ.LARKK1) 24025

# LARKK ONE ARRIVAL

AL-662 (FAA)

HARRY REID INTL (L.A.S)  
LAS VEGAS, NEVADA

LAS VEGAS APP CON  
125.025 379.15  
D-ATIS  
132.4  
LAS VEGAS TOWER  
118.75 257.8 (Rwys 1L/19R, 1R/19L)  
119.9 257.8 (Rwys 8L/26R, 8R/26L)



RNRDZ  
15000 250K

LARKK  
12500  
Ldg KLAS

BOULDER CITY  
116.7 BLD  
Chan 114

GOFFS  
114.4 GFS  
Chan 91

ZGOSH  
FL240

DAGGETT  
113.2 DAG  
Chan 79

TWENTYNINE PALMS  
114.2 TNP  
Chan 89

ZELMA

JOTNU

NOTE: Chart not to scale.

NOTE: RADAR required.  
NOTE: Turbojet aircraft only.  
NOTE: DME required.

## ARRIVAL ROUTE DESCRIPTION

**DAGGETT TRANSITION (DAG.LARKK1):** From over DAG VORTAC on DAG R-032 to RNRDZ, thence. . . .

**TWENTYNINE PALMS TRANSITION (TNP.LARKK1):** From over TNP VORTAC on TNP R-028 and GFS R-185 to GFS VORTAC, then on GFS R-300 to RNRDZ, thence. . . .

. . . .from over RNRDZ on LAS R-209 to cross LARKK at 12500, then depart LARKK heading 350° for vectors to final approach.

**LOST COMMUNICATIONS:** Proceed to BLD VORTAC and hold. Maintain 8000 or last assigned altitude whichever is greater.

LARKK ONE ARRIVAL  
(RNRDZ.LARKK1) 25FEB21

LAS VEGAS, NEVADA  
HARRY REID INTL (L.A.S)

SW-4, 13 JUN 2024 to 11 JUL 2024

SW-4, 13 JUN 2024 to 11 JUL 2024