

| | | |
|--|------------------------|---|
| WAAS CH 45508 W36A | APP CRS 002° | Rwy Idg 8000 TDZE 401 Apt Elev 407 |
|--|------------------------|---|

RNAV (GPS) RWY 36

OWENSBORO/DAVIESS COUNTY RGNL (OWB)

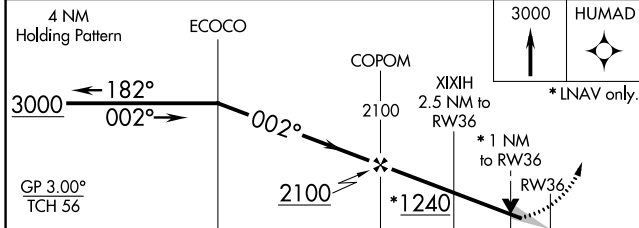
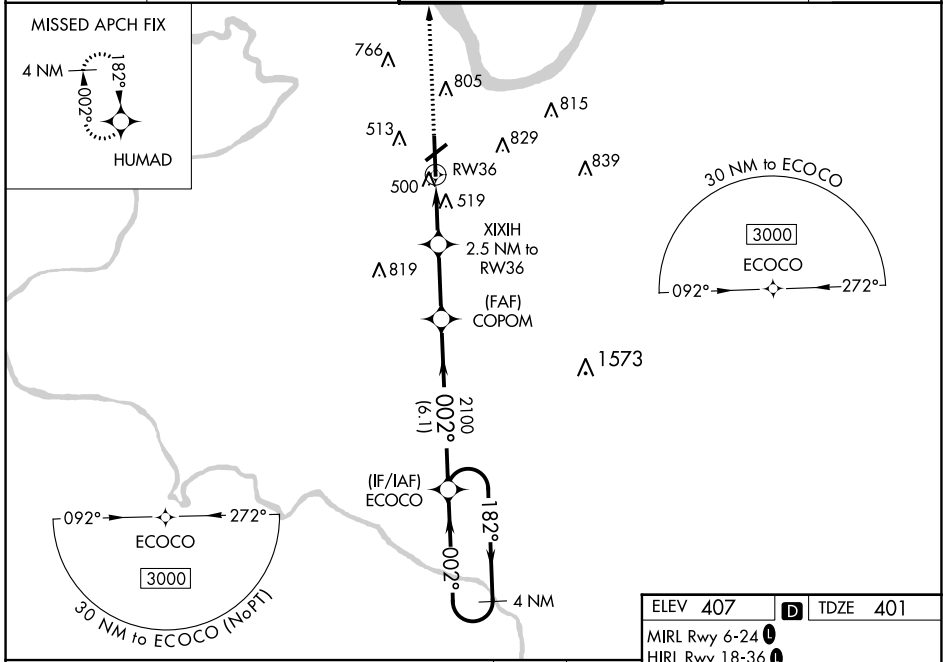
⚠ For uncompensated Baro-VNAV systems, LNAV/VNAV NA below -15°C (5°F) or above 54°C (130°F). DME/DME RNP-0.3 NA. Baro-VNAV and VDP NA when using Evansville altimeter setting. When local altimeter setting not received, use Evansville altimeter setting: increase LPV DA to 656 feet; increase LNAV/VNAV DA to 720 feet and all Cats visibility 1/8 mile; increase all MDA 60 feet and LNAV Cats C/D and Circling Cats C/D visibility 1/4 mile.

MALSR

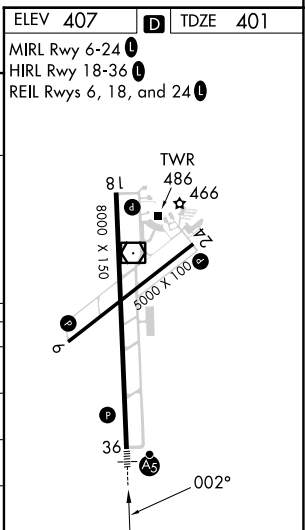


MISSED APPROACH:
Climb to 3000 direct
HUMAD and hold.

| | | | | |
|----------------------------|--|---|-------------------------|-------------------------|
| AWOS-3PT 119.025 | EVANSVILLE APP CON * 124.025 290.9 | OWENSBORO TOWER * 120.7 (CTAF) 251.15 | GND CON 121.7 | UNICOM 122.95 |
|----------------------------|--|---|-------------------------|-------------------------|



| CATEGORY | A | B | C | D |
|--------------|----------------------|-----------------------|-----------------------|-------------------------------|
| LPV DA | | 601-1/2 | 200 (200-1/2) | |
| LNAV/VNAV DA | | 665-1/2 | 264 (300-1/2) | |
| LNAV MDA | 780-1/2 | 379 (400-1/2) | 780-5/8 | 379 (400-5/8) |
| CIRCLING | 860-1 453 (500-1) | 1120-1 713 (800-1) | 1140-2 733 (800-2) | 1140-2 1/4 733 (800-2 1/4) |



RNAV (GPS) RWY 36

SE-1, 13 JUN 2024 to 11 JUL 2024

SE-1, 13 JUN 2024 to 11 JUL 2024