

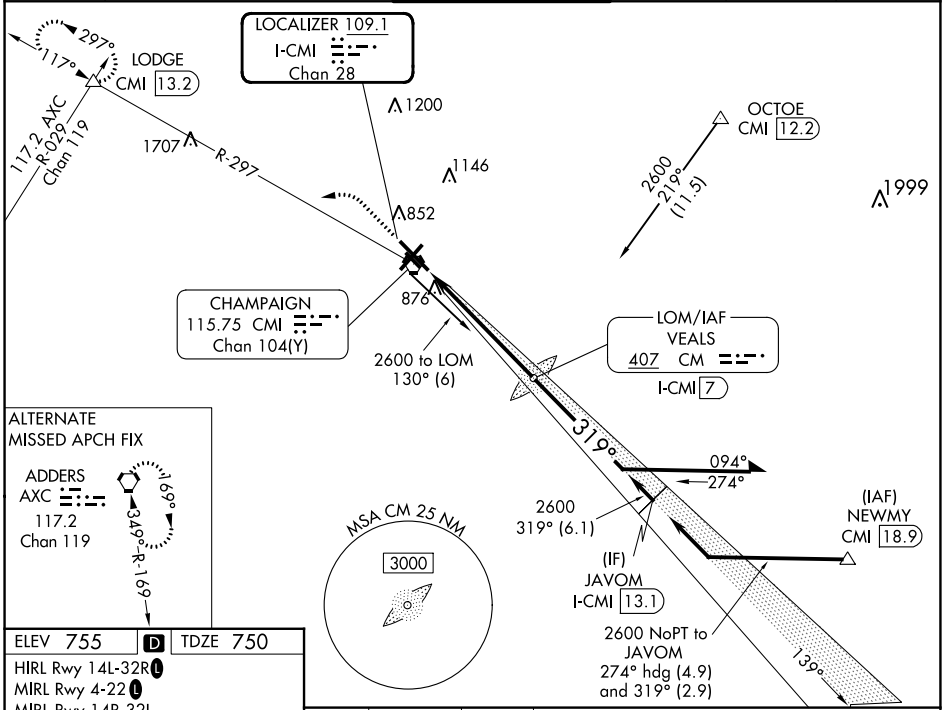
LOC/DME I-CMI 109.1 Chan 28	APP CRS 319°	Rwy Idg 8101 TDZE 750 Apt Elev 755
--	------------------------	---

ILS or LOC RWY 32R

UNIVERSITY OF ILLINOIS/WILLARD (CMI)

For inop ALS, increase S-LOC 32R Cat C and D visibility to RVR 6000. *RVR 1800 authorized with use of FD or AP or HUD to DA.	MALSR AS	MISSED APPROACH: Climb to 1200 then climbing left turn to 2800 on CMI VORTAC R-297 to LODGE INT/CMI VORTAC 13.2 DME and hold.
---	-------------	--

ATIS 124.85	CHAMPAIGN APP CON ★ 121.35 285.65 (319°-138°) 132.85 290.225 (139°-318°)	CHAMPAIGN TOWER ★ 120.4 (CTAF) 229.4	GND CON 121.8	CLNC DEL 128.75	UNICOM 122.95
-----------------------	--	--	-------------------------	---------------------------	-------------------------

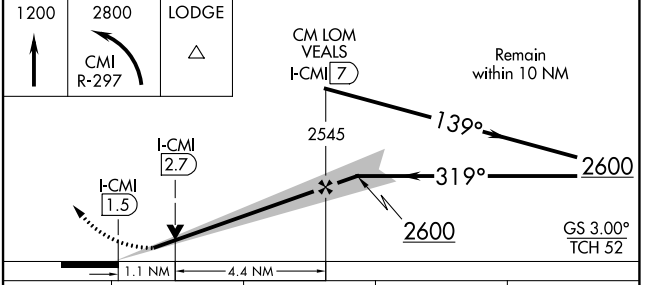
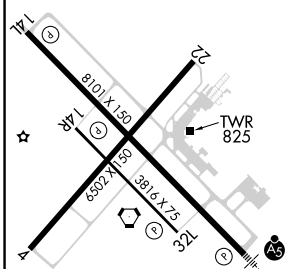


ALTERNATE MISSED APCH FIX

ADDERS AXC 117.2 Chan 119

R-199 199°

ELEV 755	D	TDZE 750
HIRL Rwy 14L-32R		
MIRL Rwy 4-22		
MIRL Rwy 14R-32L		



	CATEGORY	A	B	C	D
S-ILS 32R *		950/24 200 (200-½)			
S-LOC 32R		1160/24	410 (500-½)	1160/40	410 (500-¾)
C CIRCLING		1240-1	485 (500-1)	1500-2¼ 745 (800-2¼)	1500-2½ 745 (800-2½)

CHAMPAIGN/URBANA, ILLINOIS
Amdt 14A 25JAN24

UNIVERSITY OF ILLINOIS/WILLARD (CMI)
40°02'N-88°17'W
ILS or LOC RWY 32R

EC-3, 13 JUN 2024 to 11 JUL 2024

EC-3, 13 JUN 2024 to 11 JUL 2024