

VORTAC MKK <b>116.1</b> Chan <b>108</b>	APP CRS <b>066°</b>	Rwy Idg TDZE Apt Elev	<b>N/A</b> <b>N/A</b> <b>454</b>
---	------------------------	-----------------------------	--

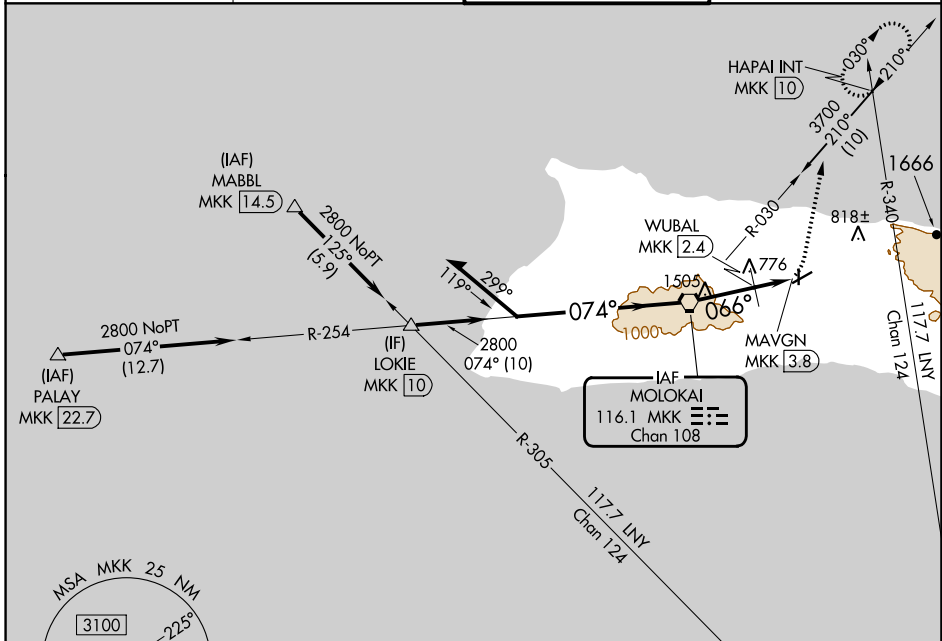
# VOR or TACAN-A

MOLOKAI (MKK) (PHMK)

**⚠** Circling Rwy 17, 23 NA at night.

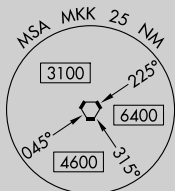
MISSED APPROACH: Climbing left turn to 4000 on heading 360° and on MKK VORTAC R-030 to HAPAI INT/MKK 10 DME and hold, continue climb-in-hold to 4000.

ATIS <b>128.2</b>	HCF CENTER <b>124.1 317.5</b>	MOLOKAI TOWER* <b>125.7 (CTAF) 0 306.2</b>	GND CON <b>121.9</b>
----------------------	----------------------------------	---	-------------------------

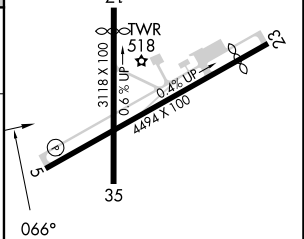
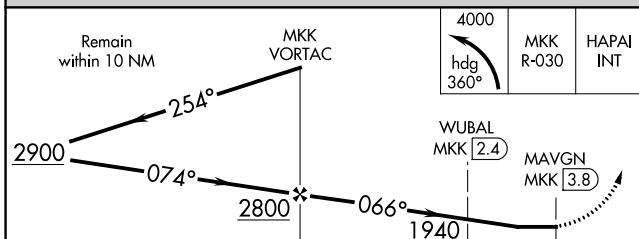
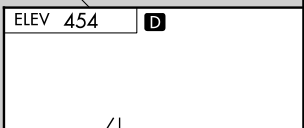


PAC, 16 MAY 2024 to 11 JUL 2024

PAC, 16 MAY 2024 to 11 JUL 2024



IAF MOLOKAI  
116.1 MKK  
Chan 108



CATEGORY	A	B	C	D
<b>C</b> CIRCLING	1940-1¼ 1486 (1500-1¼)	1940-1½ 1486 (1500-1½)	1940-3	1486 (1500-3)
WUBAL FIX MINIMUMS (DME REQUIRED)				
<b>C</b> CIRCLING	1400-1¼ 946 (1000-1¼)		1680-3 1226 (1300-3)	1940-3 1486 (1500-3)

REIL Rwy 5 **Ⓛ**  
MRL Rlys 5-23 and 17-35 **Ⓛ**

FAF to MAP 3.8 NM

Knots	60	90	120	150	180
Min:Sec	3:48	2:32	1:54	1:31	1:16