

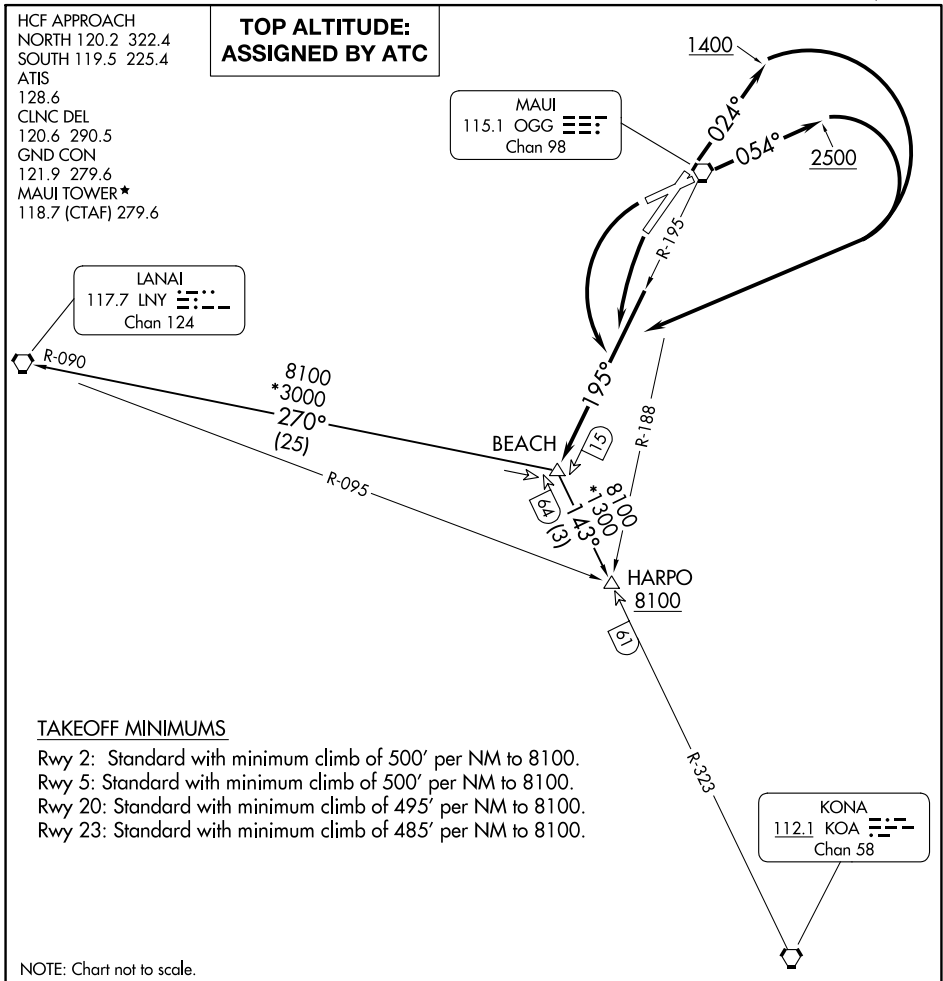
HCF APPROACH  
 NORTH 120.2 322.4  
 SOUTH 119.5 225.4  
 ATIS  
 128.6  
 CLNC DEL  
 120.6 290.5  
 GND CON  
 121.9 279.6  
 MAUI TOWER\*  
 118.7 (CTAF) 279.6

**TOP ALTITUDE:  
 ASSIGNED BY ATC**

MAUI  
 115.1 OGG  
 Chan 98

LANAI  
 117.7 LNY  
 Chan 124

KONA  
 112.1 KOA  
 Chan 58



### TAKEOFF MINIMUMS

- Rwy 2: Standard with minimum climb of 500' per NM to 8100.
- Rwy 5: Standard with minimum climb of 500' per NM to 8100.
- Rwy 20: Standard with minimum climb of 495' per NM to 8100.
- Rwy 23: Standard with minimum climb of 485' per NM to 8100.

NOTE: Chart not to scale.

**DEPARTURE ROUTE DESCRIPTION**

TAKEOFF RUNWAY 2: Climb on heading 024° to 1400 then climbing right turn via OGG R-195 to BEACH INT.

TAKEOFF RUNWAY 5: Climb on heading 054° to 2500 then climbing right turn via OGG R-195 to BEACH INT.

TAKEOFF RUNWAYS 20, 23: Climbing left turn via OGG R-195 to BEACH INT.

HARPO TRANSITION (BEACH4.HARPO): From over BEACH INT on KOA R-323 to HARPO INT.

LANAI TRANSITION (BEACH4.LNY): From over BEACH INT on LNY R-090 to LNY VORTAC.

PAC, 16 MAY 2024 to 11 JUL 2024

PAC, 16 MAY 2024 to 11 JUL 2024