

LOC/DME I-OGG <b>110.1</b> Chan <b>38</b>	APP CRS <b>024°</b>	Rwy Idg <b>6995</b> TDZE <b>55</b> Apt Elev <b>55</b>
---	------------------------	---

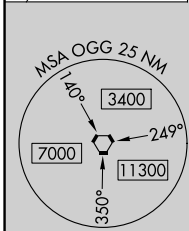
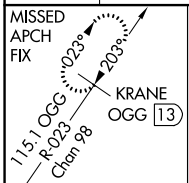
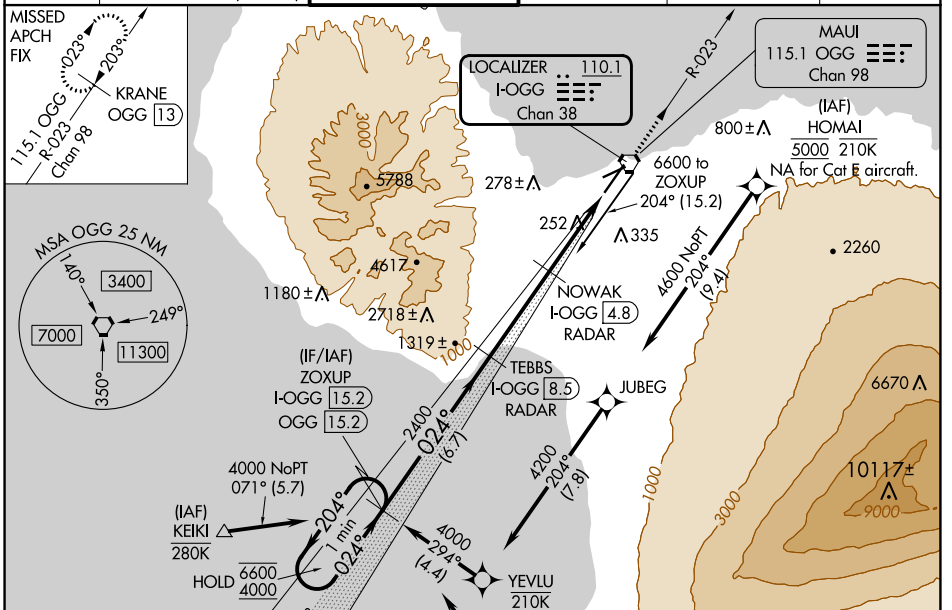
# ILS Z or LOC Z RWY 2

KAHULUI (OGG)(PHOG)

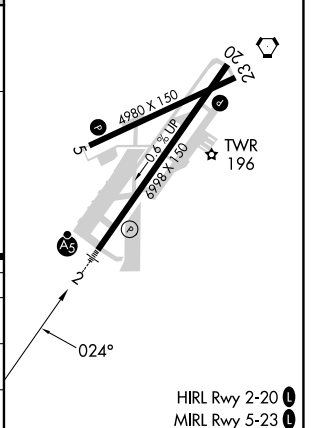
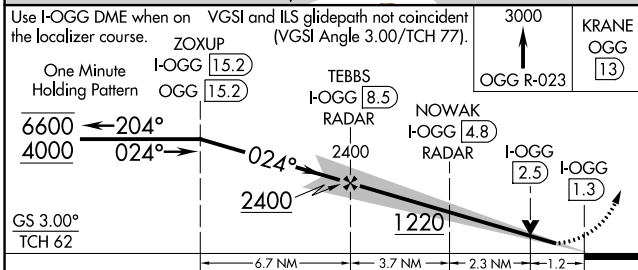
RNP APCH-GPS. From HOMAL or KEIKI or GREHG.  
DME required.  
For inop ALS, increase S-ILS 2 Cat E visibility to 3/4 SM, and S-LOC 2 Cats C/D/E visibility to 1 1/2 SM.

MALS R  
MISSED APPROACH: Climb to 3000 on OGG VORTAC R-023 to KRANE/OGG 13 DME and hold.

ATIS <b>128.6</b>	HCF APPROACH <b>120.2 322.4 (NORTH)</b> <b>119.5 225.4 (SOUTH)</b>	MAUI TOWER ★ <b>118.7 (CTAF) 0 279.6</b>	GND CON <b>121.9 279.6</b>	CLNC DEL <b>120.6 290.5</b>	UNICOM <b>122.95</b>
----------------------	--	---	-------------------------------	--------------------------------	-------------------------



ELEV 55	D TDZE 55
---------	-----------



CATEGORY	A	B	C	D	E
S-ILS 2	275-1/2 220 (300-1/2)				
S-LOC 2	520-1/2	465 (500-1/2)	520-1	465 (500-1)	
CIRCLING	520-1 465 (500-1)	620-1 565 (600-1)	740-2 685 (700-2)	1140-3 1085 (1100-3)	1720-3 1665 (1700-3)

PAC, 16 MAY 2024 to 11 JUL 2024

PAC, 16 MAY 2024 to 11 JUL 2024