


APP CRS	Rwy Idg	6995
024°	TDZE	55
	Apt Elev	55

RNAV (RNP) Z RWY 2

KAHULUI (OGG)(PHOG)

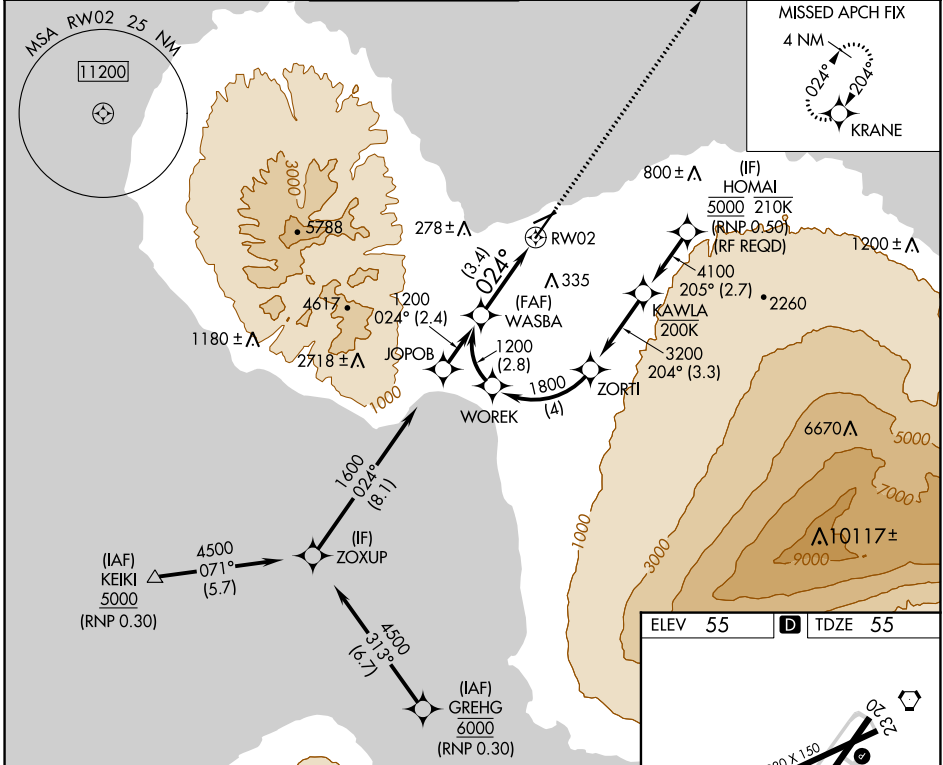
RNP AR APCH - GPS.

▼ For uncompensated Baro-VNAV systems, procedure NA below 14°C or above 54° C. When local altimeter setting not received, procedure NA. For inop ALS, increase RNP 0.30 all Cats visibility to 7/8 SM.

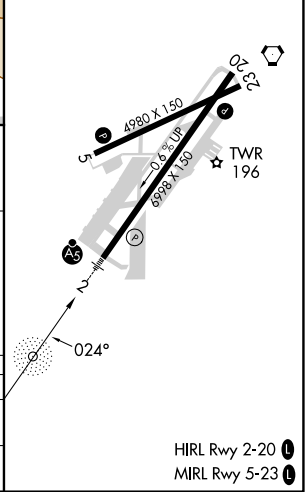
MALSR 

MISSED APPROACH: Climb to 3000 direct KRANE and hold.


ATIS	HCF APPROACH	MAUI TOWER ★	GND CON	CLNC DEL	UNICOM
128.6	120.2 322.4 (NORTH) 119.5 225.4 (SOUTH)	118.7 (CTAF) 0 279.6	121.9 279.6	120.6 290.5	122.95



ELEV 55	D TDZE 55
---------	------------------



WASBA VGSi and RNAV glidepath not coincident (VGSi Angle 3.00/TCH 77).

3000 KRANE 

See planview for multiple IF locations.



GP 3.00° TCH 62

1200 RWY 2

024°

CATEGORY	A	B	C	D
RNP 0.30 DA		394-1/2	339 (400-1/2)	

AUTHORIZATION REQUIRED

HIRL Rwy 2-20 
MIRL Rwy 5-23 

PAC, 16 MAY 2024 to 11 JUL 2024

PAC, 16 MAY 2024 to 11 JUL 2024