

WAAS CH <b>82201</b> <b>W27A</b>	APP CRS <b>269°</b>	Rwy Idg TDZE Apt Elev	<b>5401</b> <b>818</b> <b>818</b>
--	------------------------	-----------------------------	---

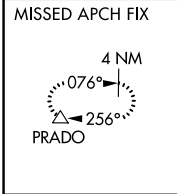
# RNAV (GPS) RWY 27

RIVERSIDE MUNI (RAL)

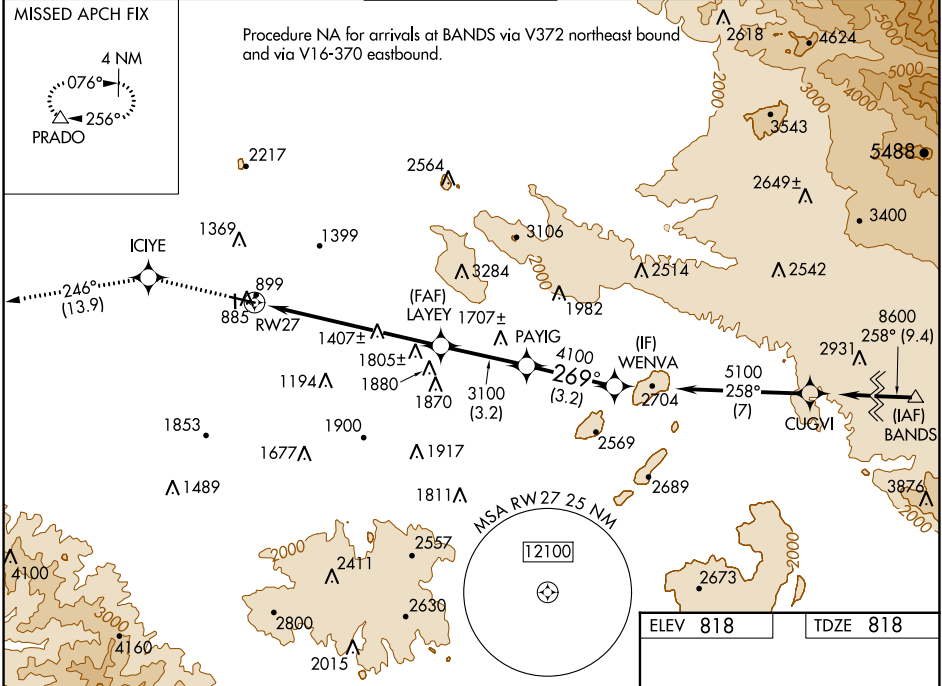
**▽** DME/DME RNP -0.3 NA.  
**⚠** For uncompensated Baro-VNAV systems, LNAV/VNAV NA below -16°C (4°F) or above 46°C (116°F).  
 Circling NA for Cat D north of Rwy 9-27.  
 Visibility reduction by helicopters NA.

MISSED APPROACH: Climb to 4000 direct ICIYE and via 246° track to PRADO and hold.

ATIS <b>128.8</b>	SOCAL APP CON <b>135.4 377.125</b>	<b>RIVERSIDE TOWER ★</b> <b>121.0</b> (CTAF) <b>0 257.8</b>	GND CON <b>124.12</b>	UNICOM <b>122.95</b>
----------------------	---------------------------------------	--	--------------------------	-------------------------



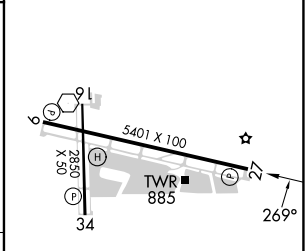
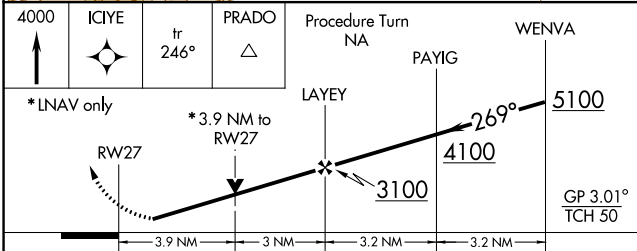
Procedure NA for arrivals at BANDS via V372 northeast bound and via V16-370 eastbound.



SW-3, 13 JUN 2024 to 11 JUL 2024

SW-3, 13 JUN 2024 to 11 JUL 2024

ELEV 818	TDZE 818
----------	----------



CATEGORY	A	B	C	D
LPV DA		1236-1½	418 (500-1½)	
LNAV/VNAV DA		1368-2	550 (600-2)	
LNAV MDA	2100-1¼ 1282 (1300-1¼)	2100-1½ 1282 (1300-1½)	2100-3	1282 (1300-3)
<b>C</b> CIRCLING	2100-2	1282 (1300-2)	2100-3	1282 (1300-3)

MIRL Rwy's 9-27 and 16-34 **⓪**