

WAAS CH 81921 W09A	APP CRS 089°	Rwy Idg TDZE Apt Elev	5401 795 819
--	------------------------	-----------------------------	---

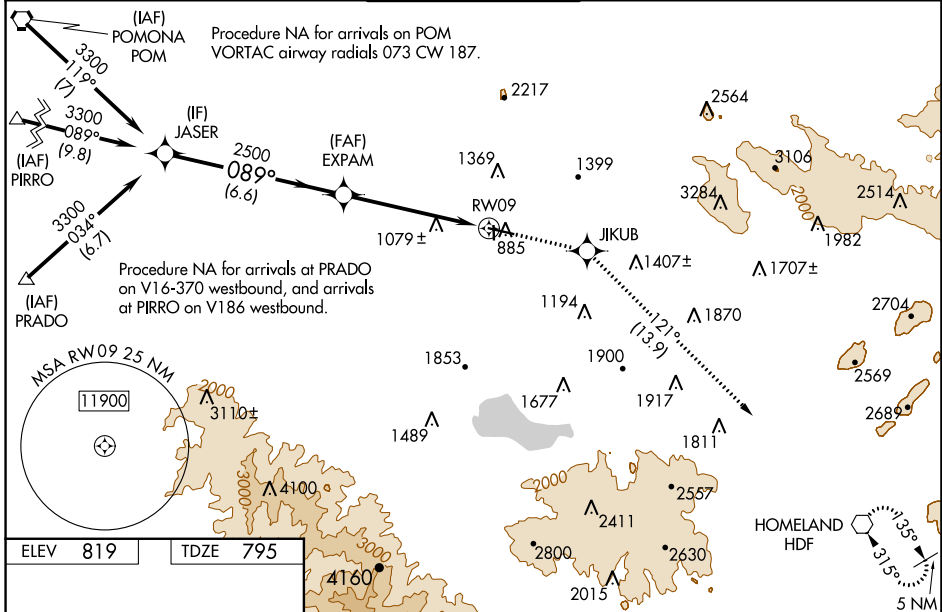
RNAV (GPS) RWY 9

RIVERSIDE MUNI (RAL)

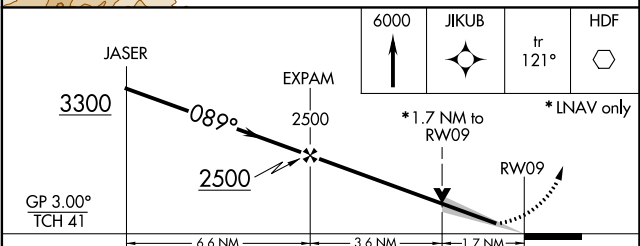
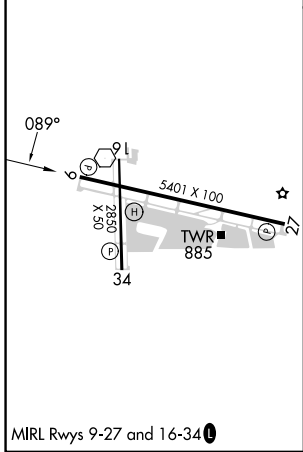
⚠ DME/DME RNP-0.3 NA. When local altimeter setting not received, use Chino altimeter setting and increase all DA 46 feet and all MDA 60 feet and increase LPV all Cats and Circling Cats C and D visibility ¼ mile and LNAV/VNAV all Cats and LNAV Cats C and D visibility ½ mile. VDP and Baro-VNAV NA with Chino altimeter setting. For uncompensated Baro-VNAV systems, LNAV/VNAV NA below -16°C (4°F) or above 54°C (130°F). Circling NA for Cat D north of Rwy 9-27.

⚠ MISSED APPROACH: Climb to 6000 direct JIKUB and on track 121° to HDF VOR and hold, continue climb-in-hold to 6000.

ATIS 128.8	SOCAL APP CON 135.4 377.125	RIVERSIDE TOWER * 121.0 (CTAF) 257.8	GND CON 124.12	UNICOM 122.95
----------------------	---------------------------------------	---	--------------------------	-------------------------



ELEV 819	TDZE 795
----------	----------



CATEGORY	A	B	C	D
LPV DA		1127-1½	332 (400-1½)	
LNAV/VNAV DA		1461-2½	666 (700-2½)	
LNAV MDA	1340-1	545 (600-1)	1340-1½	545 (600-1½)
CIRCLING	1340-1 521 (600-1)	1680-1¼ 861 (900-1¼)	1800-3 981 (1000-3)	1960-3 1141 (1200-3)

SW-3, 13 JUN 2024 to 11 JUL 2024

SW-3, 13 JUN 2024 to 11 JUL 2024