

LOC I-BLF <b>109.5</b>	APP CRS <b>229°</b>	Rwy Idg <b>4743</b>
		TDZE <b>2857</b>
		Apt Elev <b>2857</b>

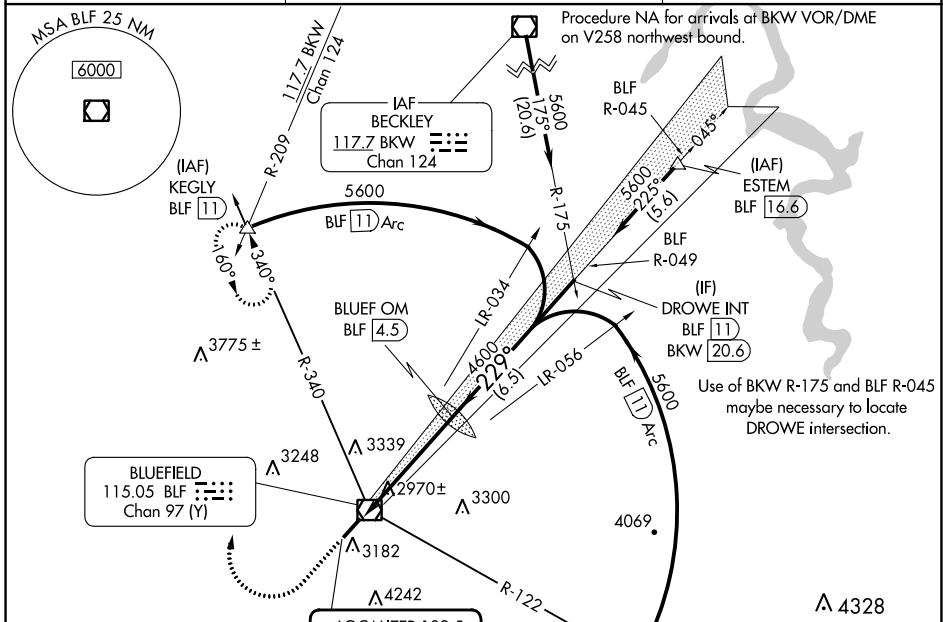
# ILS or LOC RWY 23

MERCER COUNTY (BLF)

**⚠** Autopilot coupled approach NA below 3600 MSL. When local altimeter setting not received, use Beckley altimeter setting and increase DA to 3600 feet and visibility to 2½ SM; increase all MDAs 460 feet and S-LOC 23 Cat A visibility to 1¼ SM, Cat B to 1½ SM and Cats C and D to 3 SM; increase Circling visibility Cat A to 1¼ SM, Circling Cat B to 1½ SM, Circling Cat C to 3 SM. Circling NA southeast of Rwy 5-23.

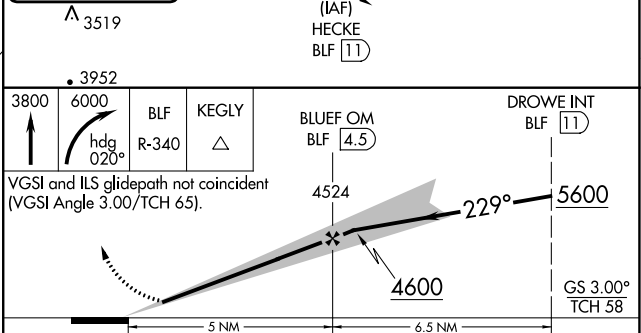
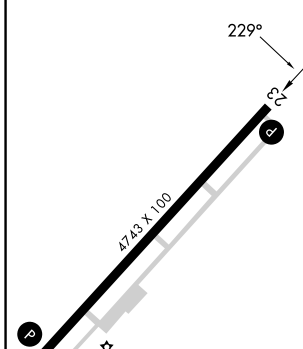
MISSED APPROACH: Climb to 3800 then climbing right turn to 6000 on heading 020° and BLF VOR/DME R-340 to KEGLY INT/BLF 11 DME and hold.

ASOS <b>132.725</b>	INDIANAPOLIS CENTER <b>126.575 257.85</b>	CTAF <b>122.9</b>
------------------------	--	----------------------



ELEV 2857	<b>D</b>	TDZE 2857
-----------	----------	-----------

LOCALIZER 109.5
I-BLF



CATEGORY	A	B	C	D
S-ILS 23	3157-1	300 (300-1)		3157- <sup>7</sup> / <sub>8</sub> 300 (300- <sup>7</sup> / <sub>8</sub> )
S-LOC 23	3520-1	663 (700-1)	3520-1 <sup>3</sup> / <sub>4</sub> 663 (700-1 <sup>3</sup> / <sub>4</sub> )	3520-2 663 (700-2)
CIRCLING	3520-1	663 (700-1)	3640-2 <sup>1</sup> / <sub>4</sub> 783 (800-2 <sup>1</sup> / <sub>4</sub> )	3780-3 923 (1000-3)

FAF to MAP 5 NM					
Knots	60	90	120	150	180
Min:Sec	5:00	3:20	2:30	2:00	1:40

NE-4, 13 JUN 2024 to 11 JUL 2024

NE-4, 13 JUN 2024 to 11 JUL 2024