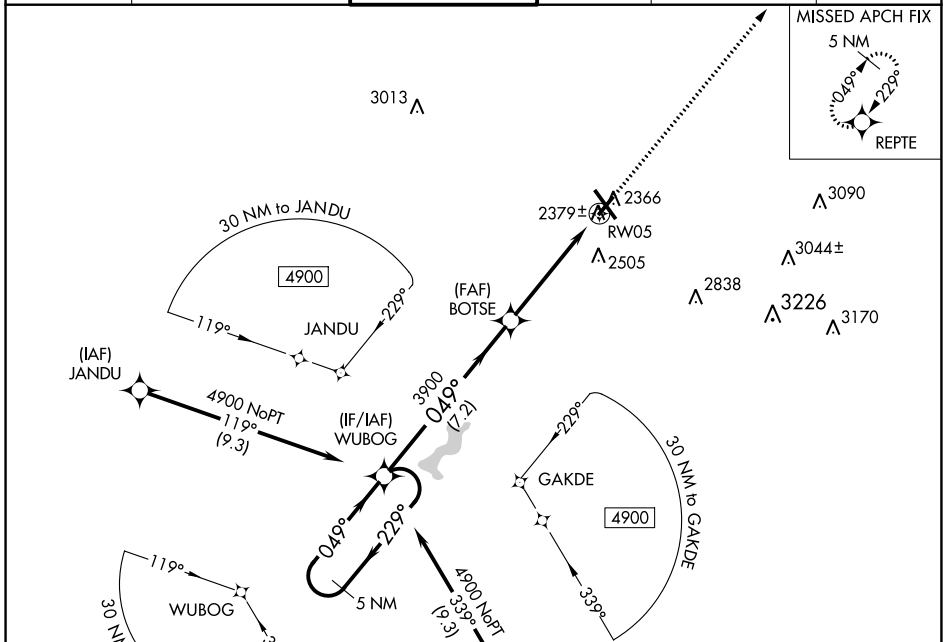


WAAS CH 61029 W05A	APP CRS 049°	Rwy Idg TDZE Apt Elev	4387 2283 2284
--	------------------------	-----------------------------	---

RNAV (GPS) RWY 5

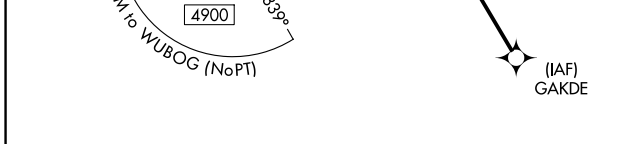
JOHN MURTHA JOHNSTOWN/CAMBRIA COUNTY (JST)

<p>▼ When local altimeter setting not received, procedure NA. For uncompensated Baro-VNAV systems, LNAV/VNAV NA below -19°C (-2°F) or above 29°C (84°F). DME/DME RNP-0.3 NA. Rwy 5 helicopter visibility reduction below 3/4 SM NA.</p>			<p>MISSED APPROACH: Climb to 4900 direct REPTE and hold.</p>		
ATIS 118.325	JOHNSTOWN APP CON ★ 121.2 299.2	JOHNSTOWN TOWER ★ 125.75 (CTAF) 0	GND CON 121.6	CLNC DEL 126.85 235.775	UNICOM 122.95

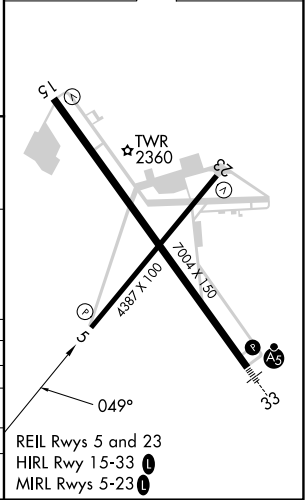


NE-4, 13 JUN 2024 to 11 JUL 2024

NE-4, 13 JUN 2024 to 11 JUL 2024



ELEV 2284	D	TDZE 2283
-----------	----------	-----------



5 NM Holding Pattern	WUBOG	BOTSE	RWY 5
4900 ← 229°	← 049°	3900	4900 REPTE
GP 3.00° TCH 39			
		7.2 NM	5 NM
CATEGORY	A	B	C
LPV DA		2533-1	250 (300-1)
LNAV/VNAV DA		2573-1	290 (300-1)
LNAV MDA		2640-1	357 (400-1)
C CIRCLING	2700-1 416 (500-1)	2880-1 596 (600-1)	2880-1½ 596 (600-1½)
			3000-2¼ 716 (800-2¼)

RNAV (GPS) RWY 5