

WAAS CH 99628 W01A	APP CRS 012°	Rwy ldg TDZE Apt Elev	4506 3150 3150
--	------------------------	-----------------------------	---

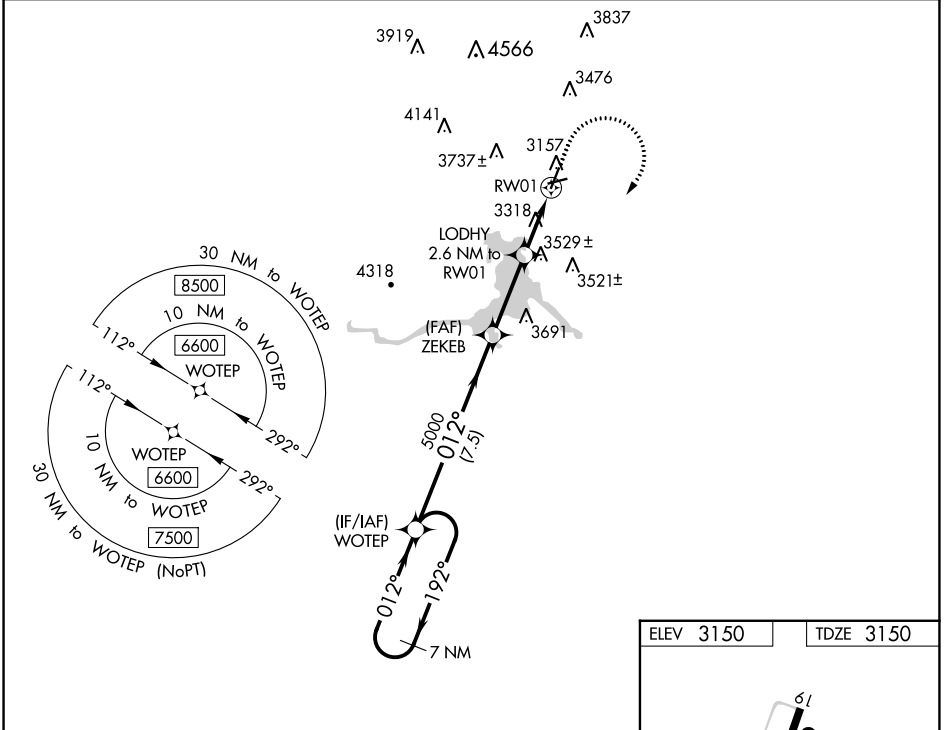
RNAV (GPS) RWY 1

HOT SPRINGS MUNI (HSR)

NA Rwy 1 helicopter visibility reduction below 3/4 NA. DME/DME RNP-0.3 NA. Circling NA west of Rwy 1-19. Use Chadron, NE altimeter setting, when not received use Rapid City Rgnl altimeter setting and increase all MDA 20 feet, increase LNAV Cat B visibility 1/4 mile. Circling NA to Rwy 6 and 24.

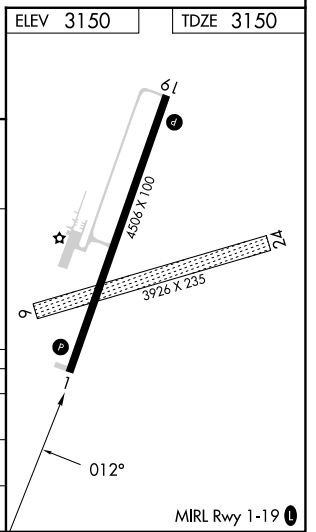
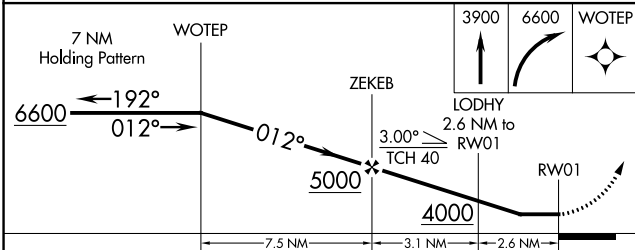
MISSED APPROACH: Climb to 3900, then climbing right turn to 6600 direct WOTEP and hold.

CDR ASOS 118.05	DENVER CENTER 127.95 338.2	GCO 121.725	AUNICOM 122.8 (CTAF)
---------------------------	--------------------------------------	-----------------------	--------------------------------



NC-1, 13 JUN 2024 to 11 JUL 2024

NC-1, 13 JUN 2024 to 11 JUL 2024



CATEGORY	A	B	C	D
LP MDA	3840-1	690 (700-1)	3840-2	690 (700-2)
LNAV MDA	3880-1	730 (800-1)	3880-2	730 (800-2)
C CIRCLING	3880-1 730 (800-1)	3900-1 750 (800-1)	3980-2 1/2 830 (900-2 1/2)	4100-3 950 (1000-3)