

APP CRS	Rwy Idg	4000
075°	TDZE	205
	Apt Elev	221

RNAV (GPS) RWY 9

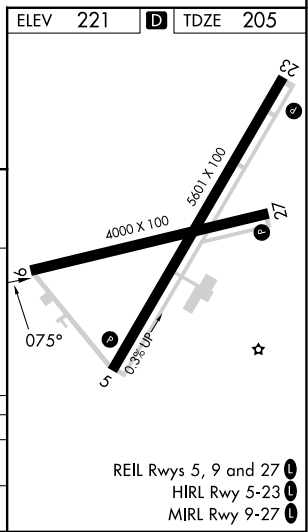
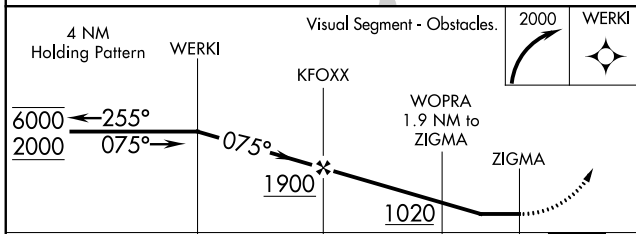
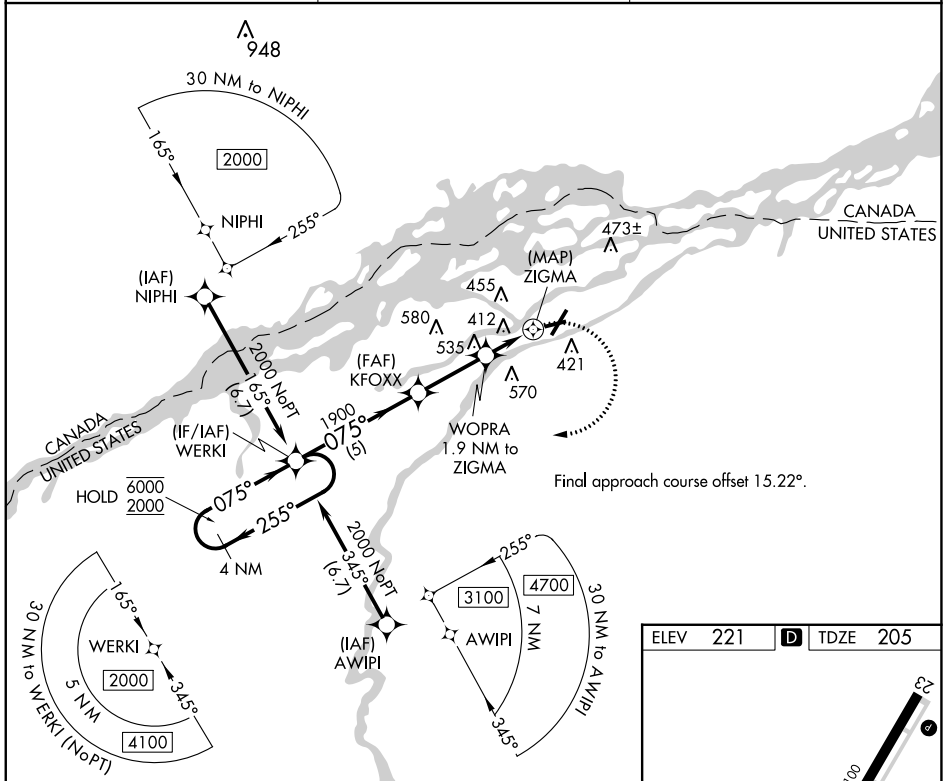
MASSENA INTL-RICHARDS FLD (MSS)

RNP APCH - GPS.

- ▼** Rwy 9 helicopter visibility reduction below 1 SM NA.
- ▲** Straight-in Rwy 9 NA at night, Circling Rwy 9, 23, 27 NA at night.

MISSED APPROACH: Climbing right turn to 2000 direct WERKI and hold.

ASOS 128.075	BOSTON CENTER 135.25 377.1	UNICOM 123.0 (CTAF) 0
------------------------	--------------------------------------	---------------------------------



CATEGORY	A	B	C	D
LNVA MDA	680-1	475 (500-1)	680-1 $\frac{3}{8}$	475 (500-1 $\frac{3}{8}$)
C CIRCLING	740-1	519 (600-1)	880-1 $\frac{3}{4}$ 659 (700-1 $\frac{3}{4}$)	880-2 659 (700-2)

NE-2, 13 JUN 2024 to 11 JUL 2024

NE-2, 13 JUN 2024 to 11 JUL 2024