

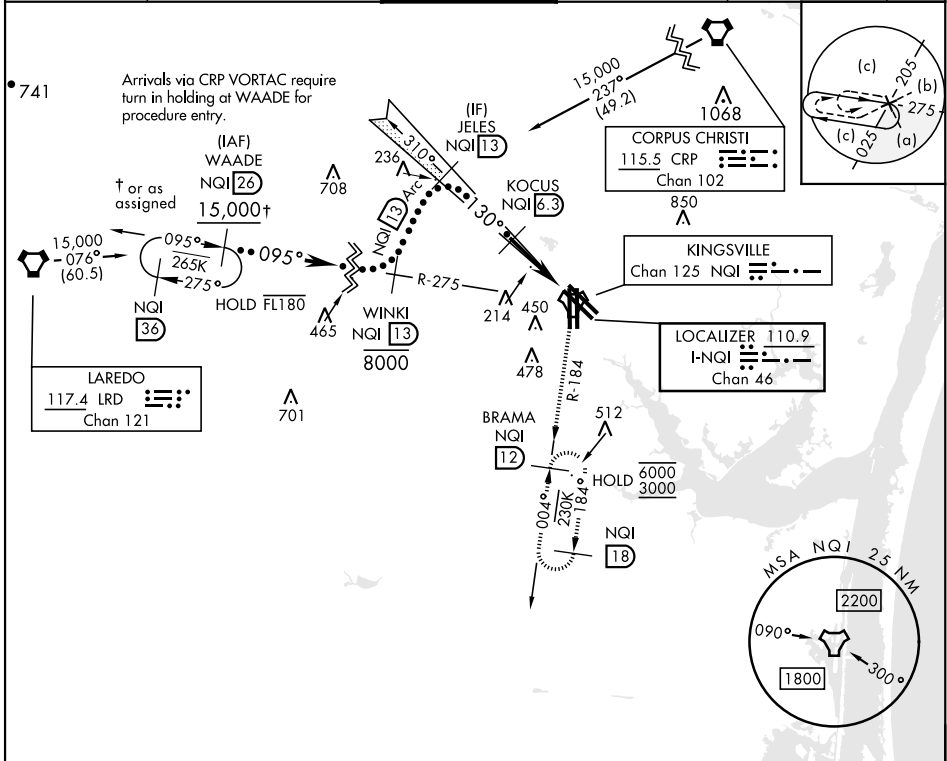
# HI-ILS W or LOC/DME W RWY 13R

LOC/DME I-NQI <b>110.9</b> Chan <b>46</b>	APCH CRS <b>130°</b>	Rwy Idg TDZE Arprt Elev <b>8000</b> <b>50</b> <b>50</b>	AL-918 [USN]	KINGSVILLE NAS (KNQI)
---	-------------------------	--	--------------	-----------------------

TACAN required.

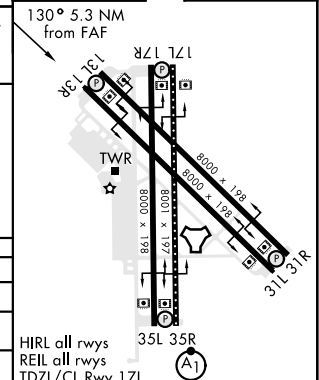
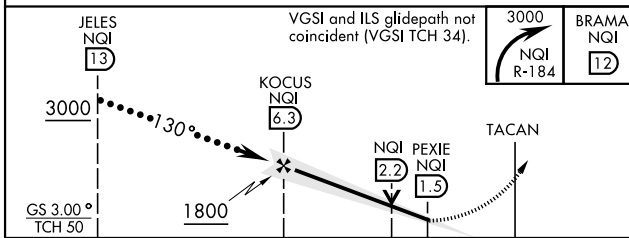
MISSED APPROACH: Climbing right turn to 3000 and intercept NQI TACAN R-184 to BRAMA and hold.

ATIS ★ <b>282.25</b>	APP CON <b>119.9 290.45</b>	TOWER ★ <b>124.1 377.05</b>	GND CON <b>239.05</b>	CLNC DEL <b>328.4</b>	ASR/ PAR
-------------------------	--------------------------------	--------------------------------	--------------------------	--------------------------	-------------



EMERG SAFE ALT 100 NM 16,200

ELEV 50	TDZE 50
---------	---------



CATEGORY	C	D	E
S-ILS 13R	250-3/4	200	(200-3/4)
S-LOC 13R	460-1 1/8	410	(500-1 1/8)
CIRCLING	760-2 710 (800-2)	760-2 1/4 710 (800-2 1/4)	800-2 3/4 750 (800-2 3/4)

# HI-ILS W or LOC/DME W RWY 13R



SC-3, 13 JUN 2024 to 11 JUL 2024

SC-3, 13 JUN 2024 to 11 JUL 2024

Orig 14JUL22