

TACAN Z RWY 17R

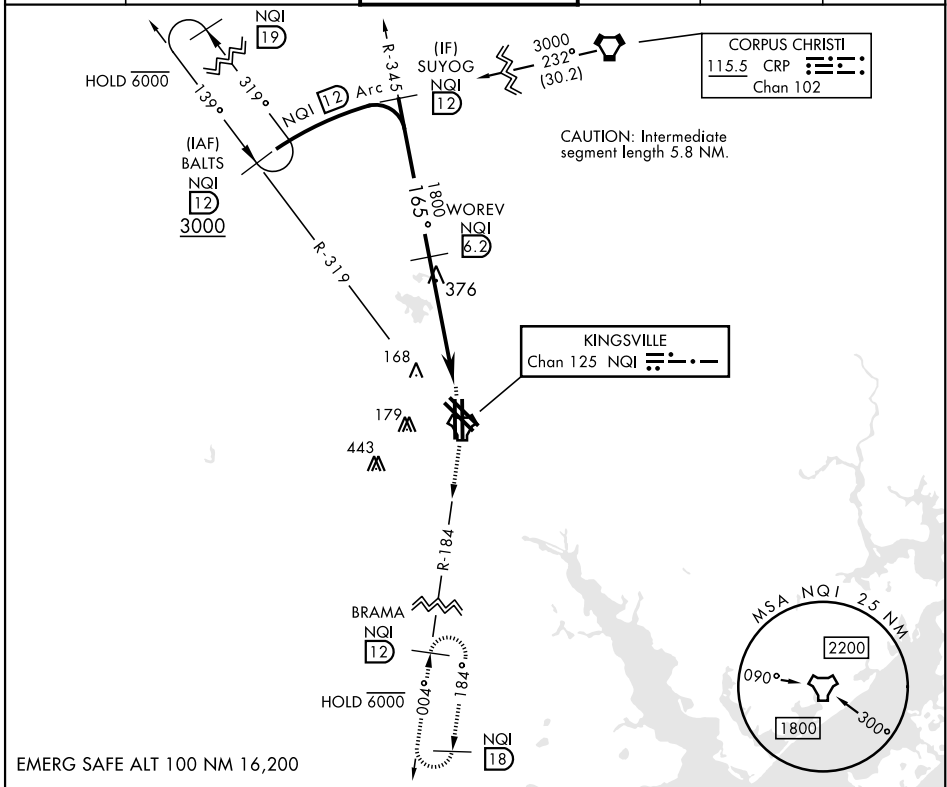
TACAN NQI Chan 125	APCH CRS 165°	Rwy Ldg TDZE Arprt Elev	8000 49 50
------------------------------	-------------------------	----------------------------	---------------------------------------

AL-918 [USN]

KINGSVILLE NAS (KNQI)

MISSED APPROACH: Climb to 3000 direct NQI TACAN and climbing right turn to intercept NQI R-184 to BRAMA and hold.

ATIS ★ 282.25	APP CON 119.9 290.45	TOWER ★ 124.1 377.05	GND CON 239.05	CLNC DEL 328.4	ASR/PAR
-------------------------	--------------------------------	--------------------------------	--------------------------	--------------------------	---------



EMERG SAFE ALT 100 NM 16,200

3000 NQI		BRAMA NQI 12		ELEV 50	TDZE 49
SUYOG R-345 NQI 12		WOREV NQI 6.2		165° to TACAN	
1800		1800		TWR 150	
3.05° TCH 50		860		145	
2.9 NM		1.9 NM		35L 35R	
CATEGORY	A	B	C	D	
S-17R	400-1	351	(400-1)		
CIRCLING	540-1	490 (500-1)	760-2 710 (800-2)	760-2½ 710 (800-2½)	HIRL all rwys REIL all rwys TDZL/CL Rwy 17L

KINGSVILLE, TEXAS
Amdt 1 05NOV20

27°30'N-97°49'W

KINGSVILLE NAS (KNQI)

TACAN Z RWY 17R

SC-3, 13 JUN 2024 to 11 JUL 2024

SC-3, 13 JUN 2024 to 11 JUL 2024