

# HI-TACAN Z RWY 23L/R

AL-934 [USN]

OCEANA NAS (APOLLO SOUCEK FLD) (KNTU)

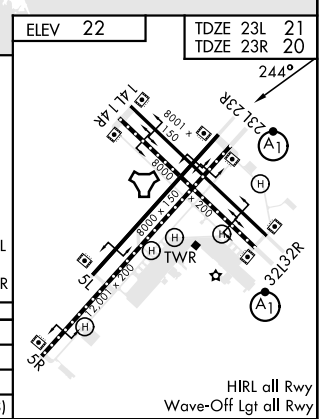
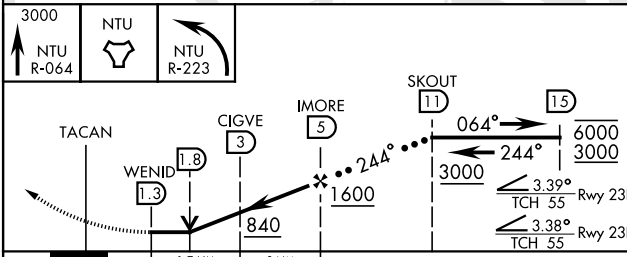
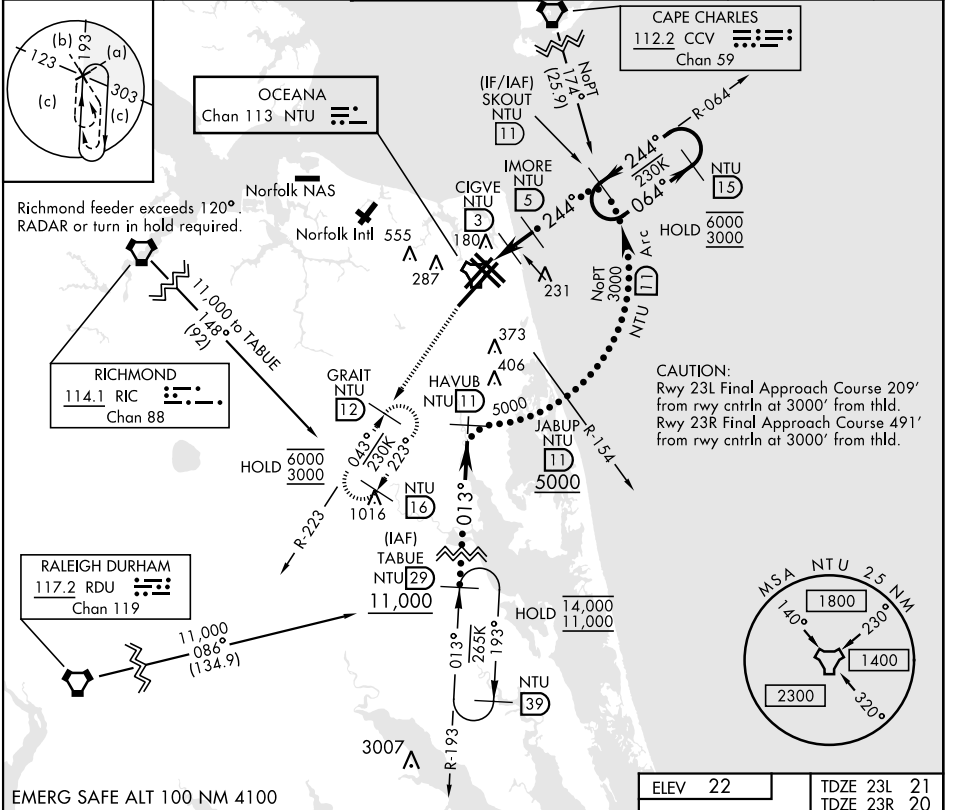
TACAN NTU Chan 113	APCH CRS 244°	Rwy Idg 23L 12,001 23R 8000	TDZE 23L 21 23R 20	Arpt Elev 22
-----------------------	------------------	--------------------------------	-----------------------	-----------------

ALSF-1

\* When ALS inop, increase CAT CDE vis to 1½ miles

MISSED APPROACH: Climb to 3000 via R-064 to NTU TACAN, and via R-223 to GRAIT and hold.

ATIS 317.6	APP/DEP CON 123.9 266.8	TOWER 127.075 360.2	GND CON 119.6 336.4	CLNC DEL 254.4	ASR/ PAR
---------------	----------------------------	------------------------	------------------------	-------------------	-------------



# HI-TACAN Z RWY 23L/R

NE-3, 13 JUN 2024 to 11 JUL 2024

NE-3, 13 JUN 2024 to 11 JUL 2024