

TACAN NTU Chan 113	APCH CRS 309°	Rwy ldg TDZE 32L 8000 32R 20	32R 8001 20	AL-934 [USN] OCEANA NAS (APOLLO SOUCEK FLD) (KNTU)
-----------------------	------------------	------------------------------------	----------------	---

ALSF-1

 MISSED APPROACH: Climbing left turn to 3000, intercept NTU TACAN R-223 to GRAIT and hold.

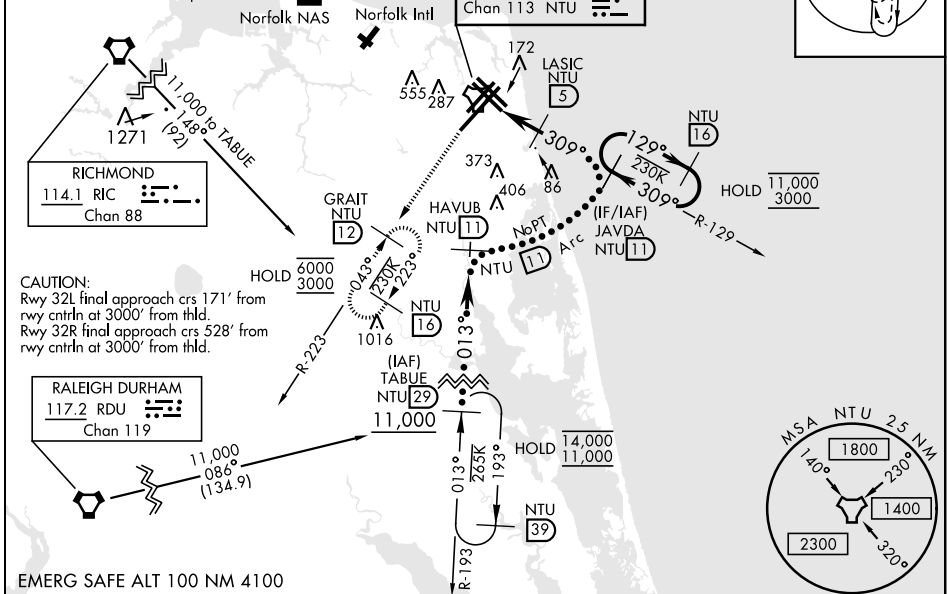
* When ALS inop, increase CAT CDE vis to 1½ miles.

ATIS 317.6	APP/DEP CON 123.9 266.8	TOWER 127.075 360.2	GND CON 119.6 336.4	CLNC DEL 254.4	ASR/PAR
---------------	----------------------------	------------------------	------------------------	-------------------	---------

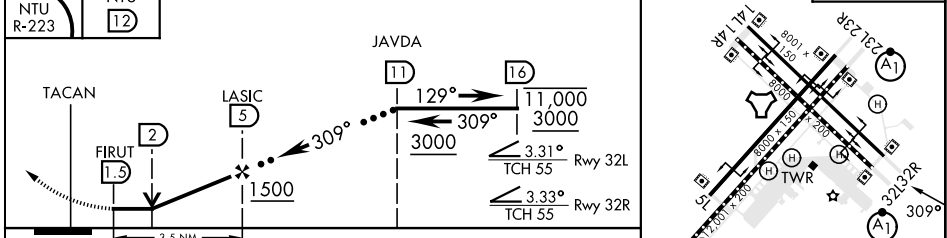
Knots	60	120	180	240	300	360
V/V(fpm)	220	440	660	880	1100	1320

Min climb of 220 ft/NM to 3000 - Controlling Obstacle Unk

RICHMOND feeder turn exceeds 120°. RADAR or turn in hold required



3000 NTU R-223	GRAIT NTU 12	ELEV 22	TDZE 32L 22 TDZE 32R 20
----------------	--------------	---------	----------------------------



CATEGORY	C	D	E
S-32L *	440-¾	418 (500-¾)	
S-32R	440-1½	420 (500-1½)	
CIRCLING	600-1½ 578 (600-1½)	600-2 578 (600-2)	900-3 878 (900-3)

NE-3, 13 JUN 2024 to 11 JUL 2024

NE-3, 13 JUN 2024 to 11 JUL 2024

HIRL all Rwy
Wave-Off Lgt all Rwy