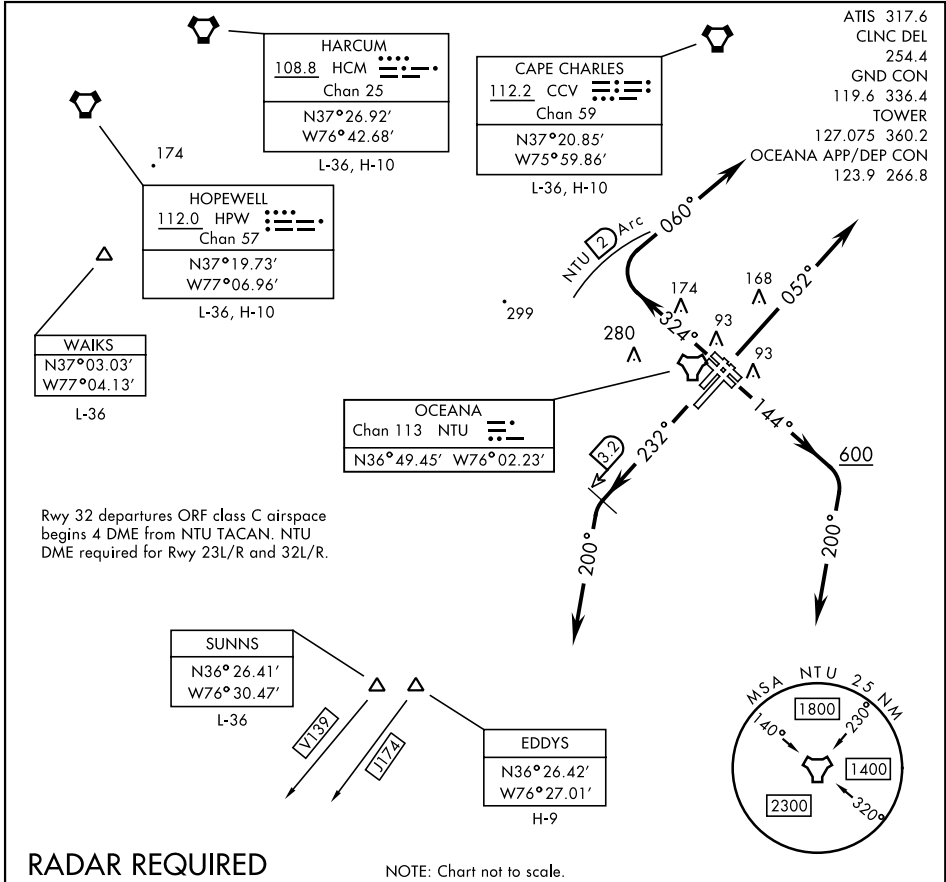


# OCEANA-FIVE DEPARTURE (NTU5•NTU)

OCEANA NAS (APOLLO SOUCEK FLD) (KNTU)

AL-934 [USN]

VIRGINIA BEACH, VIRGINIA



NE-3, 13 JUN 2024 to 11 JUL 2024

NE-3, 13 JUN 2024 to 11 JUL 2024

## DEPARTURE ROUTE DESCRIPTION

TAKE-OFF RWY 5L/R: Climb heading 052°. Thence...

TAKE-OFF RWY 14L/R: Climb heading 144° to 600 then climbing right turn heading 200°. Thence...

TAKE-OFF RWY 23L/R: Climb heading 232°, crossing NTU TACAN 3.2 DME, turn left heading 200°. Thence...

TAKE-OFF RWY 32L/R: Climb heading 324° to assigned altitude, turn right heading 060° within NTU TACAN 2 DME. Thence...

...maintain 4000 or assigned lower altitude.

CAPE CHARLES TRANSITION (NTU5.CCV): Via RADAR vectors to CCV VORTAC.

EDDYS TRANSITION (NTU5.EDDYS): Via RADAR vectors to EDDYS.

HARCUM TRANSITION (NTU5.HCM): Via RADAR vectors to HCM VORTAC.

HOPEWELL TRANSITION (NTU5.HPW): Via RADAR vectors to HPW VORTAC.

(At or below 17,000 only).

SUNNS TRANSITION (NTU5.SUNNS): Via RADAR vectors to SUNNS.

(At or below 17,000 only).

WAIKS TRANSITION (NTU5.WAIKS): Via RADAR vectors to WAIKS.

# OCEANA-FIVE DEPARTURE (NTU5•NTU)

VIRGINIA BEACH, VIRGINIA

OCEANA NAS (APOLLO SOUCEK FLD) (KNTU)