


VIRGINIA BEACH, VIRGINIA

RNAV (GPS) RWY 5R

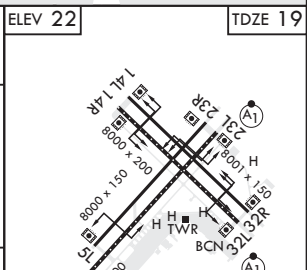
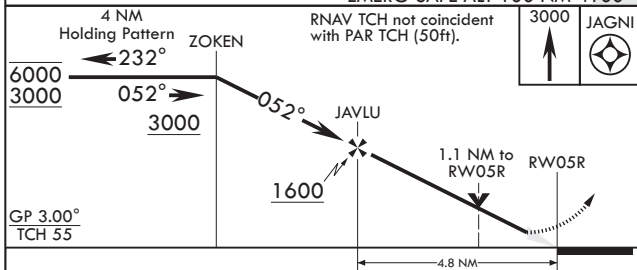
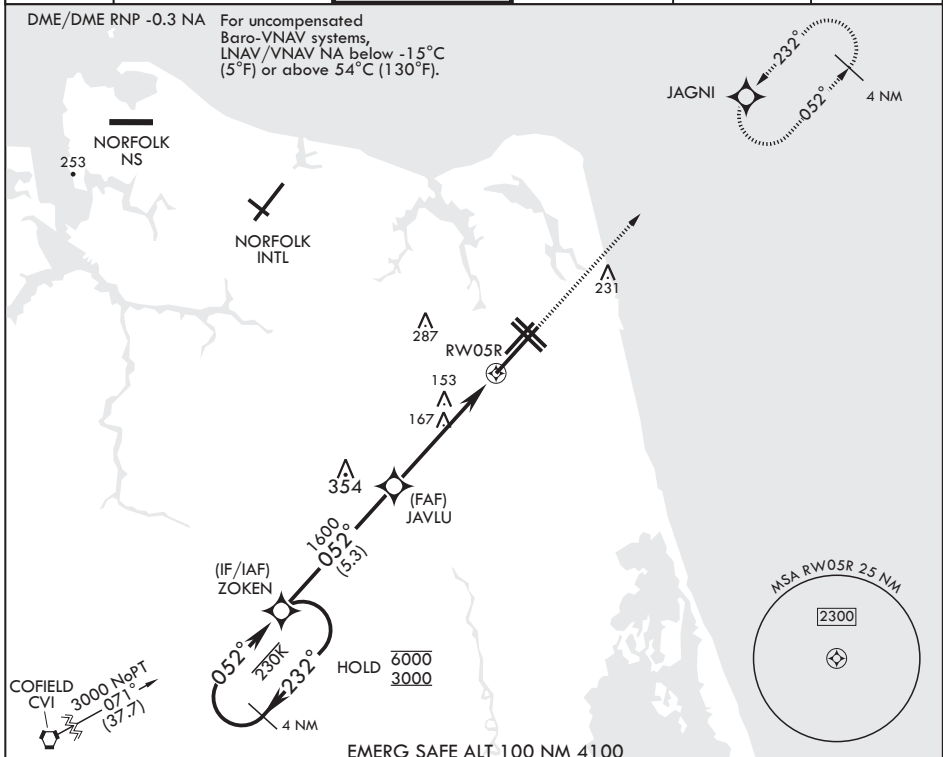
WAAS CH 69870 W05B	APCH CRS 052°	Rwy ldg TDZE Arprt Elev	12,001 19 22
---------------------------------	-------------------------	-------------------------------	---

AL-934 (USN) OCEANA NAS (APOLLO SOUCEK FLD) (KNTU)

V * When ALS inop increase vis to 3/4 mile.
 ** When ALS inop increase vis to 7/8 mile.
 *** When ALS inop, increase CAT AB vis to 1 mile; CAT CD vis to 1 1/8 miles.


ALSF-1  MISSED APPROACH: Climb to 3000 direct JAGNI and hold. Continue climb in hold to 3000.

ATIS 317.6	APP CON/DEP CON 123.9 266.8	TOWER 127.075 360.2	GND CON 119.6 336.4	CLNC DEL 254.4	ASR/PAR
----------------------	---------------------------------------	-------------------------------	-------------------------------	--------------------------	---------



CATEGORY	A	B	C	D
LPV DA*	219-1/2	200	(200-1/2)	
RNAV/VNAV DA**	333-1/2	314	(400-1/2)	
RNAV MDA***	420-1/2 401 (400-1/2)	420-3/4 401 (400-3/4)		
C CIRCLING	500-1 478 (500-1)	600-1 578 (600-1 1/2)	600-2 578 (600-2)	

ELEV 22 TDZE 19

JAGNI  3000

HIRL all Rwys
Wave-Off Lights all Rwys

VIRGINIA BEACH, VIRGINIA
Amdt 4 27 JAN 22

36°49'N - 76°02'W OCEANA NAS (APOLLO SOUCEK FLD) (KNTU)

RNAV (GPS) RWY 5R

NE-3, 13 JUN 2024 to 11 JUL 2024

NE-3, 13 JUN 2024 to 11 JUL 2024