

VIRGINIA BEACH, VIRGINIA

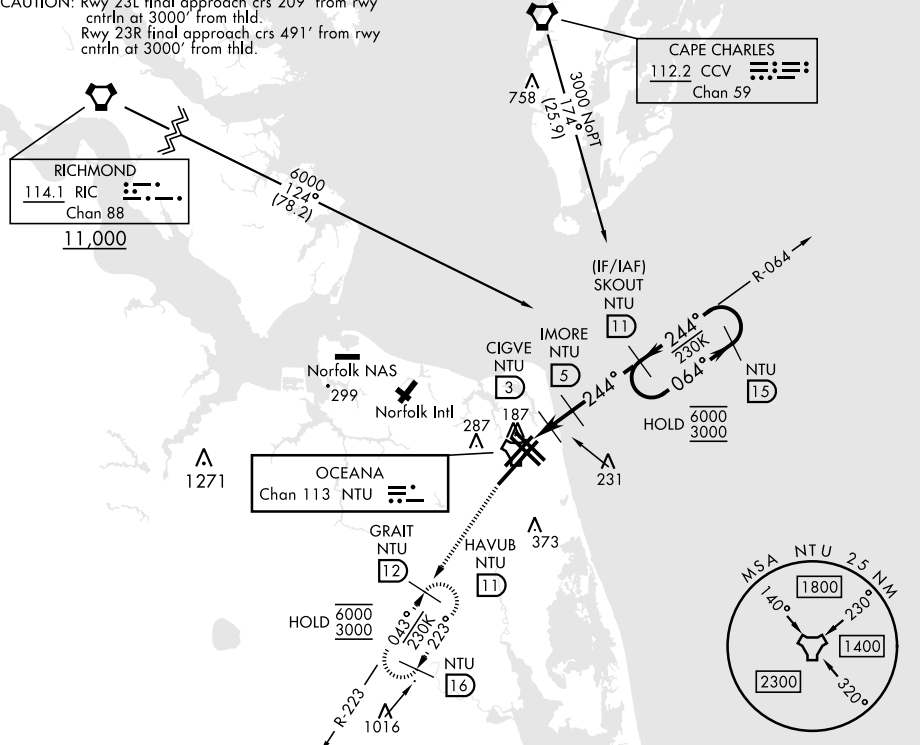
TACAN Y RWY 23L/R

TACAN NTU Chan 113	APCH CRS 244°	Rwy ldg 23L 12,001 23R 8000 TDZE 23L 21 23R 20 Arprt Elev	AL-934 [USN] OCEANA NAS (APOLLO SOUCEK FLD) (KNTU)
-----------------------	------------------	---	---

<p>⚠ * When ALS inop, increase CAT AB vis to 1 mile, CAT CD vis to 1½ miles.</p> <p>ALSF-1 A1</p>	<p>MISSED APPROACH: Climb to 3000 via R-064 to NTU TACAN and via R-223 to GRAIT and hold.</p>
---	---

ATIS 317.6	APP/DEP CON 123.9 266.8	TOWER 127.075 360.2	GND CON 119.6 336.4	CLNC DEL 254.4	ASR/ PAR
---------------	----------------------------	------------------------	------------------------	-------------------	-------------

CAUTION: Rwy 23L final approach crs 209° from rwy ctrln at 3000' from thld.
Rwy 23R final approach crs 491° from rwy ctrln at 3000' from thld.



EMERG SAFE ALT 100 NM 4100

<p>3000</p> <p>↑ NTU R-064</p> <p>NTU</p> <p>NTU R-223</p>	<p>ELEV 22</p> <p>TDZE 23L 21 TDZE 23R 20</p>																				
<table border="1"> <thead> <tr> <th>CATEGORY</th> <th>A</th> <th>B</th> <th>C</th> <th>D</th> </tr> </thead> <tbody> <tr> <td>S-23L *</td> <td>440-½</td> <td>419 (500-½)</td> <td>440-¾</td> <td>419 (500-¾)</td> </tr> <tr> <td>S-23R</td> <td>440-1</td> <td>420 (500-1)</td> <td>440-1⅛</td> <td>420 (500-1⅛)</td> </tr> <tr> <td>CIRCLING</td> <td>500-1</td> <td>478 (500-1)</td> <td>600-1½ 578 (600-1½)</td> <td>600-2 578 (600-2)</td> </tr> </tbody> </table>	CATEGORY	A	B	C	D	S-23L *	440-½	419 (500-½)	440-¾	419 (500-¾)	S-23R	440-1	420 (500-1)	440-1⅛	420 (500-1⅛)	CIRCLING	500-1	478 (500-1)	600-1½ 578 (600-1½)	600-2 578 (600-2)	<p>HIRL all rwys Wave-Off Lgt all rwys</p>
CATEGORY	A	B	C	D																	
S-23L *	440-½	419 (500-½)	440-¾	419 (500-¾)																	
S-23R	440-1	420 (500-1)	440-1⅛	420 (500-1⅛)																	
CIRCLING	500-1	478 (500-1)	600-1½ 578 (600-1½)	600-2 578 (600-2)																	

VIRGINIA BEACH, VIRGINIA

36° 49' N-76° 02' W

OCEANA NAS (APOLLO SOUCEK FLD) (KNTU)

Orig 27JAN22

TACAN Y RWY 23L/R

NE-3, 13 JUN 2024 to 11 JUL 2024

NE-3, 13 JUN 2024 to 11 JUL 2024