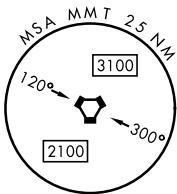
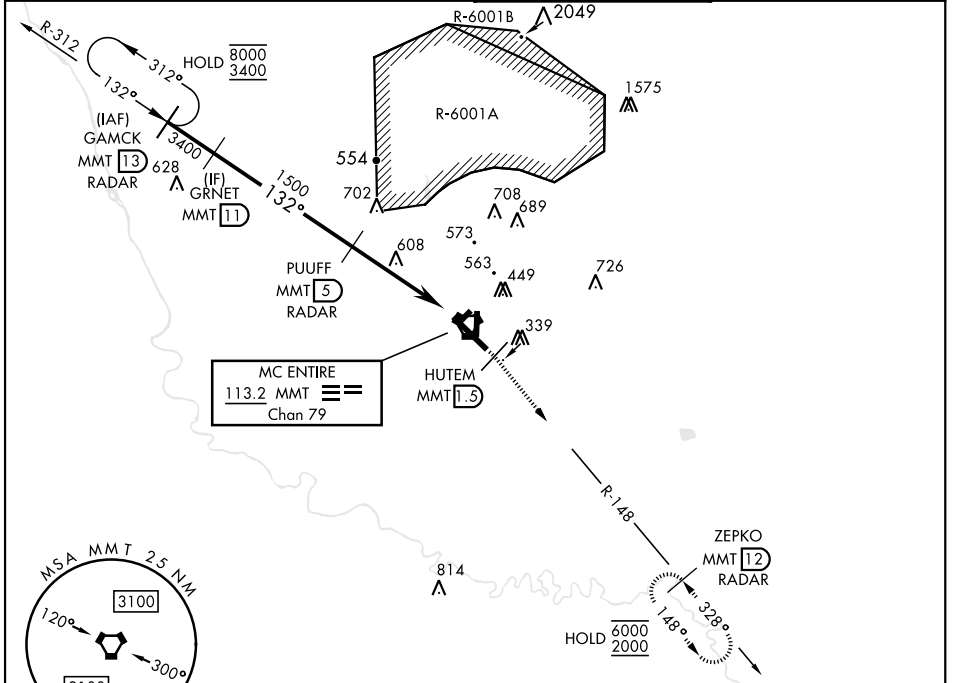


# TACAN RWY 14

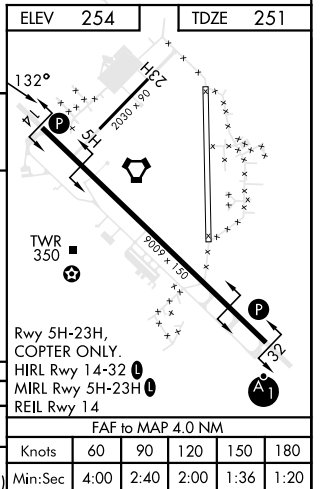
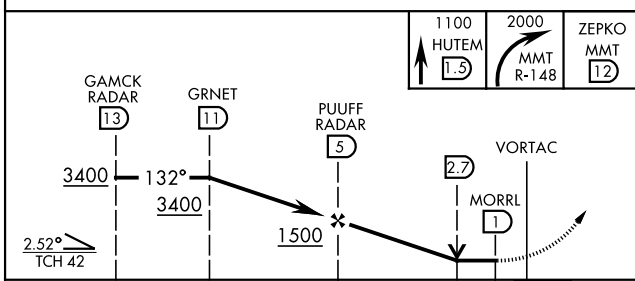
VORTAC MMT <b>113.2</b> Chan <b>79</b>	APCH CRS <b>132°</b>	Rwy Ildg TDZE <b>251</b> Arprt Elev <b>254</b>	AL-951 [USAF]	MC ENTIRE JNGB (KMMT)
--	-------------------------	---	---------------	-----------------------

\* Circling to Rwy 05H-23H NA at night. MISSED APPROACH: Climb to 1100 direct HUTEM/1.5 DME then climbing right turn to 2000 intercept MMT R-148 direct ZEPKO/12 DME and hold.

ATIS ★ <b>327.05</b>	SHAW APP CON <b>125.4 318.1</b>	TOWER ★ <b>132.4 (CTAF) 253.5</b>	GND CON <b>127.625 226.675</b>
-------------------------	------------------------------------	--------------------------------------	-----------------------------------



EMERG SAFE ALT 100 NM 3800



CATEGORY	A	B	C	D	E
S-14	880-1	629 (700-1)	880-1 $\frac{3}{4}$	629 (700-1 $\frac{3}{4}$ )	
CIRCLING*	880-1	626 (700-1)	880-1 $\frac{3}{4}$	1020-2 $\frac{1}{2}$	1020-2 $\frac{3}{4}$
			626 (700-1 $\frac{3}{4}$ )	766 (800-2 $\frac{1}{2}$ )	766 (800-2 $\frac{3}{4}$ )

# TACAN RWY 14

SE-2, 13 JUN 2024 to 11 JUL 2024

SE-2, 13 JUN 2024 to 11 JUL 2024