

LOS ALAMITOS, CALIFORNIA

RNAV (GPS) RWY 22L

APCH CRS 223°	Rwy Idg 8001
	TDZE 35
	Arprt Elev 35

-(USA)

LOS ALAMITOS AAF (KSLI)

<p>NA * When ALS inop, increase CAT D vis to 1 mile. ** When ALS inop using SANTA ANA altimeter setting, increase CAT D vis to 1 1/8 mile. *** Circling not authorized N of Rwy 4L-22R.</p>	<p>SALS</p>	<p>MISSED APPROACH: Climb to 500 then climbing left turn to 2100 direct ALBAS and hold.</p>
--	--------------------	--

<p>ATIS* 118.875 379.975</p>	<p>SOCAL APP CON/DEP CON 125.35 316.125</p>	<p>TOWER* 123.85 (CTAF) 251.15</p>	<p>GND CON 126.95 257.95</p>
---	--	---	---

When Los Alamitos altimeter setting not available, use Santa Ana altimeter setting.

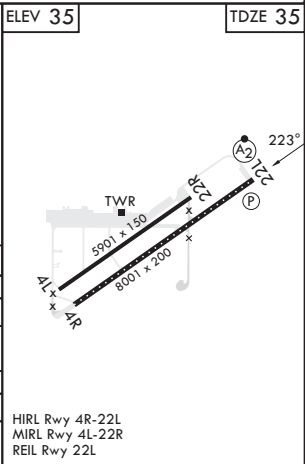
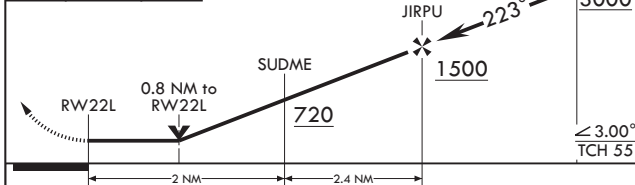
Procedure NA for arrivals on POM VORTAC airway R-112 CW R-254.

VDP NA when using Santa Ana altimeter setting.

DME/DME RNP 0.3 N/A.



500	2100	ALBAS	VGSI and descent angles not coincident.	FEBUG	ELEV 35	TDZE 35
-----	------	-------	---	-------	---------	---------



CATEGORY	A	B	C	D
LNAV MDA*	380-3/4		345	(400-3/4)
C CIRCLING***	440-1 405 (500-1)	500-1 465 (500-1)	560-1 1/2 525 (600-1 1/2)	680-2 645 (700-2)
SANTA ANA ALTIMETER SETTING MINIMUMS				
LNAV MDA**	420-3/4	385 (400-3/4)	420-7/8	385 (400-7/8)
C CIRCLING***	480-1 445 (500-1)	540-1 505 (600-1)	600-1 1/2 565 (600-1 1/2)	720-2 685 (700-2)

HIRL Rwy 4R-22L
MIRL Rwy 4L-22R
REIL Rwy 22L

LOS ALAMITOS, CALIFORNIA

33°47'N - 118°03'W

LOS ALAMITOS AAF (KSLI)

Amdt 1 07DEC17

RNAV (GPS) RWY 22L

SW-3, 13 JUN 2024 to 11 JUL 2024

SW-3, 13 JUN 2024 to 11 JUL 2024