

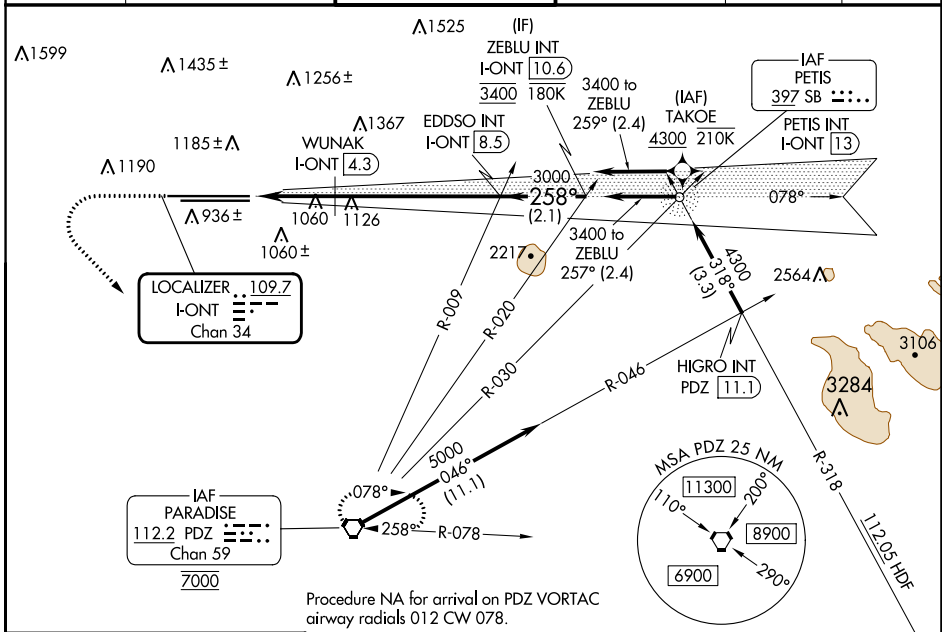
LOC/DME I-ONT 109.7 Chan 34	APP CRS 258°	Rwy Idg 26R 12197 932 944	26L 10200 926 944
---	------------------------	---------------------------------------	----------------------------

ILS or LOC RWY 26R

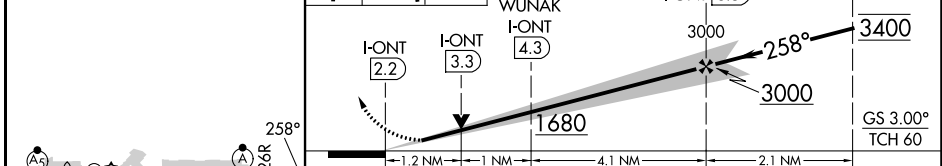
ONTARIO INTL (ONT)

RNP APCH - GPS. From TAKOE.	ALSF-2 Rwy 26R	ALSF-2 Rwy 26L	MISSED APPROACH: Climb to 2800 then climbing left turn to 5400 direct PDZ VORTAC and hold, continue climb-in-hold to 5400.
<p>⚠ Circling NA north of Rwy 8L-26R. For inop ALS, increase S-LOC 26R Cat C and D visibility to 2 SM.</p>			

D-ATIS 124.25	SOCAL APP CON 127.0 318.2	ONTARIO TOWER 120.6 360.775	GND CON 121.9 257.8	CLNC DEL 132.9	CPDLC
-------------------------	-------------------------------------	---------------------------------------	-------------------------------	--------------------------	-------



ELEV 944	D TDZE 26R 932 TDZE 26L 926	2800	5400	PDZ	VGSI and ILS glidepath not coincident (VGSI Angle 3.00/TCH 75).	ZEBLU INT I-ONT [10.6]
----------	---------------------------------------	------	------	-----	---	------------------------



CATEGORY	A	B	C	D
S-ILS 26R	1132/18 200 (200-½)			
S-LOC 26R	1680/24 748 (800-½)	1680/40 748 (800-¾)	1680-1¾ 754 (800-1¾)	748 (800-1¾)
SIDESTEP 26L	1680/55	754 (800-1)	1680-1¾ 754 (800-1¾)	1680-2 754 (800-2)
C CIRCLING	1680-1 736 (800-1)	1680-1¼ 736 (800-1¼)	1680-2¼ 736 (800-2¼)	1680-2½ 736 (800-2½)
WUNAK FIX MINIMUMS (DME REQUIRED)				
S-LOC 26R	1320/24	388 (400-½)	1320/35	388 (400-⅝)

ONTARIO, CALIFORNIA
Amdt 6 10AUG23

34°03'N-117°36'W

ONTARIO INTL (ONT) ILS or LOC RWY 26R

SW-3, 13 JUN 2024 to 11 JUL 2024

SW-3, 13 JUN 2024 to 11 JUL 2024