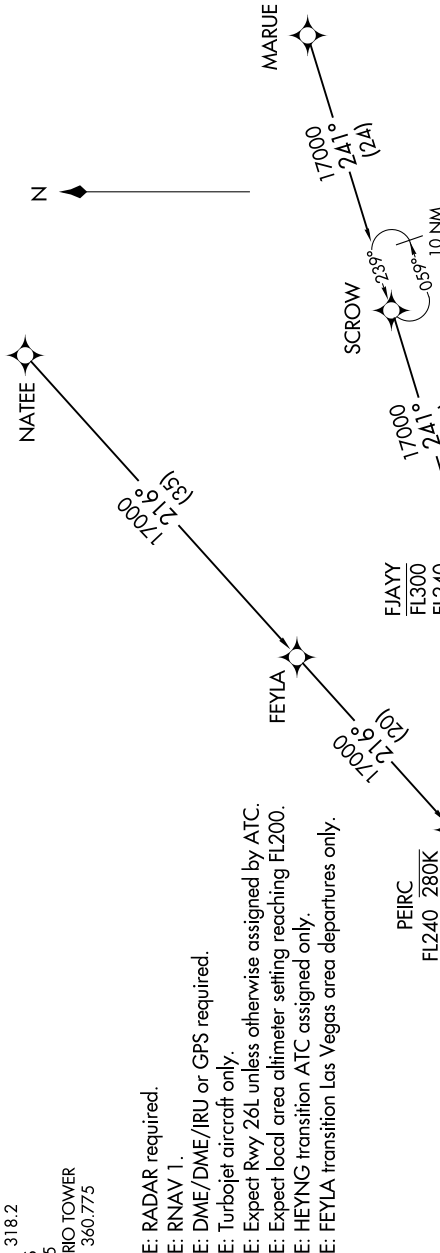


SW-3, 13 JUN 2024 to 11 JUL 2024

SOCAL APP CON  
127.0 318.2  
D-ATIS  
124.25  
ONTARIO TOWER  
120.6 360.775

NOTE: RADAR required.  
NOTE: RNAV 1.  
NOTE: DME/DME/IRU or GPS required.  
NOTE: Turbojet aircraft only.  
NOTE: Expect local area altimeter setting FL200.  
NOTE: HEYNG transition ATC assigned only.  
NOTE: FEYLA transition Las Vegas area departures only.



NOTE: Chart not to scale.

FEYLA TRANSITION (FEYLA.JCKIE2)  
HEYNG TRANSITION (HEYNG.JCKIE2)  
MARUE TRANSITION (MARUE.JCKIE2)  
NATEE TRANSITION (NATEE.JCKIE2)

(CONTINUED ON FOLLOWING PAGE)

JCKIE  
FL190  
17000

See following page for arrival route.

ONTARIO, CALIFORNIA  
ONTARIO INTL (ONT)

SW-3, 13 JUN 2024 to 11 JUL 2024