

RNAV (RNP) Z RWY 26L

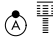
ONTARIO INTL (ONT)

APP CRS	Rwy Idg	10200
258°	TDZE	926
	Apt Elev	944

RNP AR APCH - GPS.

▼ For uncompensated Baro-VNAV systems, procedure NA below 1°C or above 54°C. For inop ALS, increase RNP 0.10 visibility all Cats to RVR 4500, RNP 0.17 visibility all Cats to RVR 5000, RNP 0.30 visibility all Cats to RVR 6000.

ALSF-2



MISSED APPROACH: Climb to 3400 on track 258° to AXOYO and track 174° to LAKVE and track 122° to MARIAM and track 079° to ADRYN and hold.

D-ATIS	SOCAL APP CON	ONTARIO TOWER	GND CON	CLNC DEL	CPDLC
124.25	127.0 318.2	120.6 360.775	121.9 257.8	132.9	

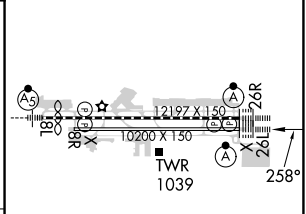
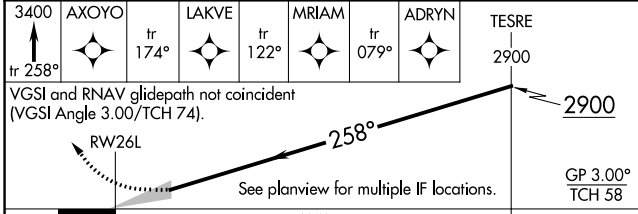


ELEV 944

TDZE 926

Procedure NA for arrivals at GAREY on V8-21 northeast bound.

Procedure NA for arrival on PDZ VORTAC airway radials 012 CW 078.



CATEGORY	A	B	C	D
RNP 0.10 DA		1203/24	277 (300-½)	
RNP 0.17 DA		1245/24	319 (400-½)	
RNP 0.30 DA		1322/35	396 (400-¾)	

AUTHORIZATION REQUIRED

TDZ/CL Rwys 8L, 26R and 26L

HIRL Rwys 8L-26R and 8R-26L

SW-3, 13 JUN 2024 to 11 JUL 2024

SW-3, 13 JUN 2024 to 11 JUL 2024