

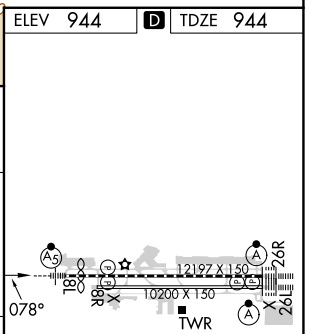
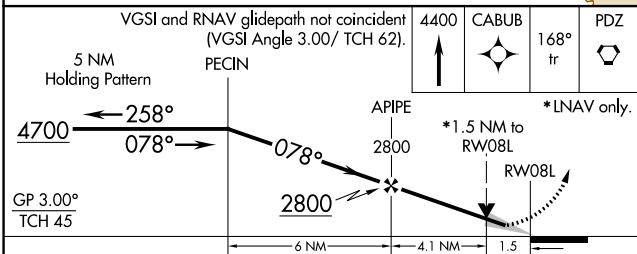
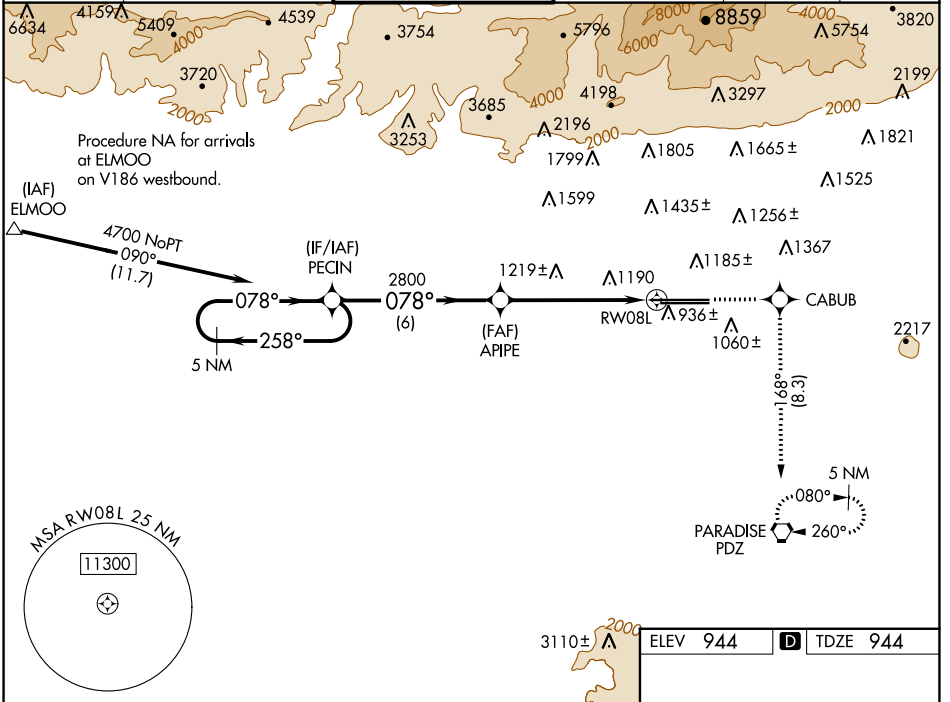
WAAS CH 45807 W08B	APP CRS 078°	Rwy Idg 11200 TDZE 944 Apt Elev 944
--	------------------------	--

RNAV (GPS) Y RWY 8L

ONTARIO INTL (ONT)

<p>▽ For uncompensated Baro-VNAV systems, LNAV/VNAV NA below -16°C (4°F) or above 47°C (116°F). Circling NA north of Rwy 8L-26R. DME/DME RNP -0.3 NA. For inoperative MALSRL increase LPV visibility all Cats to RVR 6000.</p>	<p>MALSRL</p>	<p>MISSED APPROACH: Climb to 4400 direct CABUB and on track 168° to PDZ VORTAC and hold, continue climb-in-hold to 4700.</p>
---	----------------------	---

D-ATIS 124.25	SOCAL APP CON 127.0 318.2	ONTARIO TOWER 120.6 360.775	GND CON 121.9 257.8	CLNC DEL 132.9	CPDLC
-------------------------	-------------------------------------	---------------------------------------	-------------------------------	--------------------------	-------



CATEGORY	A	B	C	D
LPV DA		1266/30	322 (400-5%)	
LNAV/VNAV DA		1520-1½	576 (600-1½)	
LNAV MDA	1480/24	536 (600-½)	1480/55	536 (600-1)
C CIRCLING	1480-1	536 (600-1)	1540-1½ 596 (600-1½)	1600-2 656 (700-2)

TDZ/CL Rws 8L, 26R and 26L
HIRL Rws 8L-26R and 8R-26L

SW-3, 13 JUN 2024 to 11 JUL 2024

SW-3, 13 JUN 2024 to 11 JUL 2024