

WAAS CH 53617 W14A	APP CRS 139°	Rwy Idg 5608 TDZE 21 Apt Elev 24
--	------------------------	---

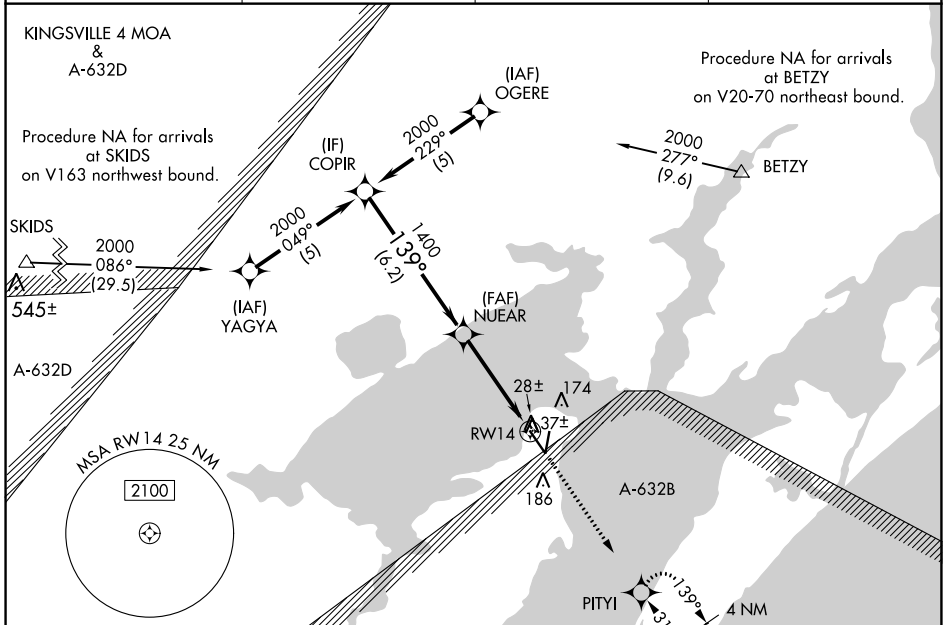
RNAV (GPS) RWY 14

ARANSAS COUNTY (RKP)

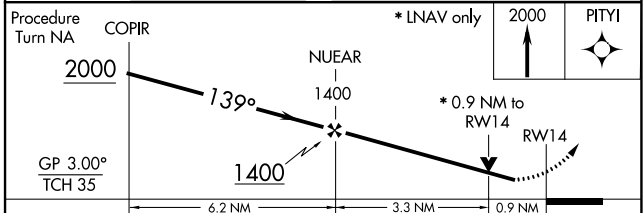
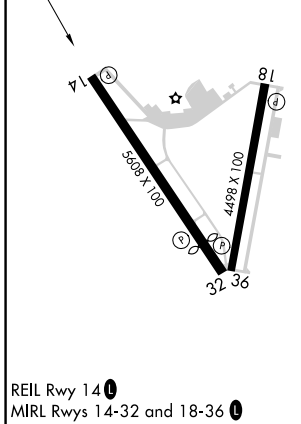
Baro-VNAV NA when using Ingleside altimeter setting. For uncompensated Baro-VNAV systems, LNAV/VNAV NA below -15°C (5°F) or above 54°C (130°F). DME/DME RNP-0.3 NA. Helicopter visibility reduction below 3/4 SM NA. When local altimeter setting not received, use Ingleside altimeter setting and increase all DA 33 feet and all MDA 40 feet increase LNAV/VNAV all Cats visibility 1/4 mile. VDP NA with Ingleside altimeter setting.

MISSED APPROACH:
Climb to 2000 direct PITYI and hold.

ASOS 119.275	CORPUS APP CON 120.9 348.725	CLNC DEL 121.7	UNICOM 123.05 (CTAF) 0
------------------------	--	--------------------------	----------------------------------



ELEV 24	TDZE 21
----------------	----------------



CATEGORY	A	B	C	D
LPV DA	271-1	250 (300-1)		NA
LNAV/VNAV DA	378-1 1/4	357 (400-1 1/4)		NA
LNAV MDA	320-1	299 (300-1)		NA
CIRCLING	500-1	476 (500-1)	500-1 1/2 476 (500-1 1/2)	NA

SC-3, 13 JUN 2024 to 11 JUL 2024

SC-3, 13 JUN 2024 to 11 JUL 2024