

DELTA JUNCTION/FORT GREELY, ALASKA

VOR/DME or TACAN RWY 19

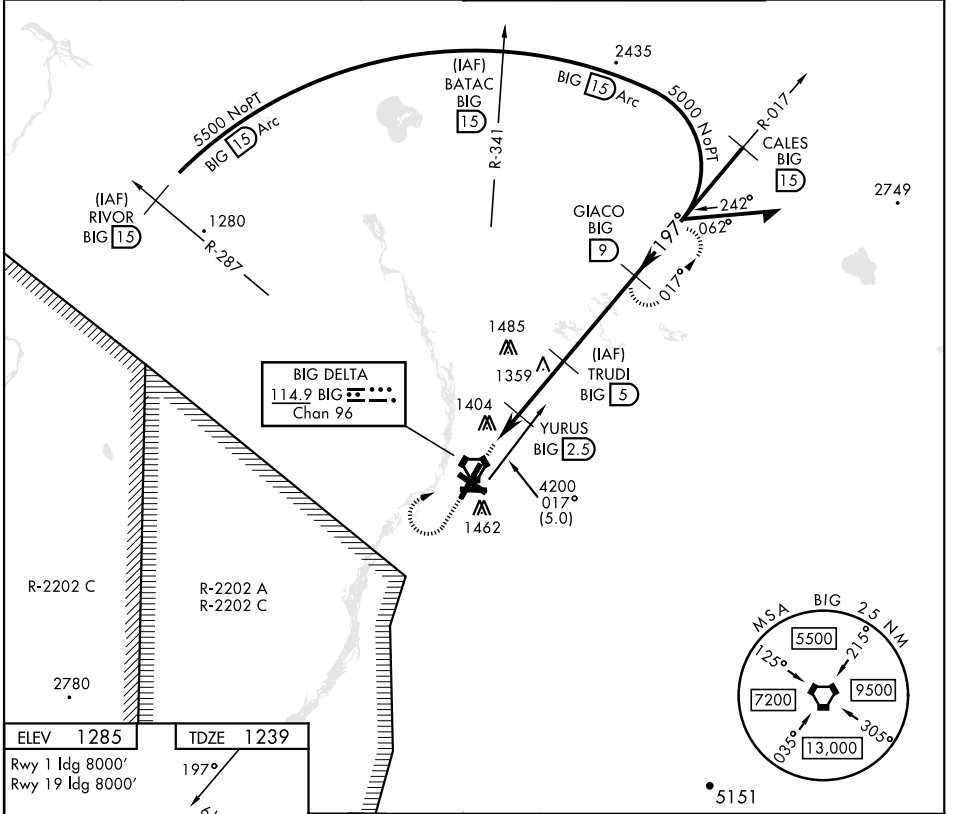
VORTAC BIG 114.9 Chan 96	APCH CRS 197°	Rwy ldg TDZE 1239 Arpt Elev 1285
--	-------------------------	--

AL-1218 [USA]

ALLEN AAF (PABI)

*Circling not authorized East of Rwy 1-19.		MISSED APPROACH: Climb to 2100, then climbing right turn to 4000 via BIG R-017 to GIACO/9 DME and hold.	
--	--	---	--

ATIS 132.075	ASOS 135.65	ANCHORAGE CENTER 135.3 322.5	CTAF 122.9	TOWER * 119.8 235.775 40.8 (E) FM		GND CON 118.225 251.05
------------------------	-----------------------	--	----------------------	---	--	----------------------------------

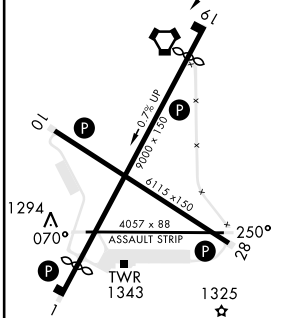


AK, 16 MAY 2024 to 11 JUL 2024

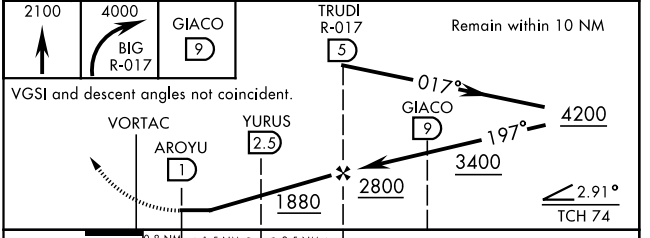
AK, 16 MAY 2024 to 11 JUL 2024

ELEV 1285	TDZE 1239
------------------	------------------

Rwy 1 ldg 8000'
Rwy 19 ldg 8000'



HIRL Rwy 1-19 and 10-28
MIRL Rwy 070°-250°
REIL Rwy 10-28



CATEGORY	A	B	C	D
S-19	1660-1 421 (400-1)		1660-1¼ 421 (400-1¼)	
CIRCLING *	1720-1 435 (500-1)	1760-1 475 (500-1)	1760-1½ 475 (500-½)	1860-2 575 (600-2)

DELTA JUNCTION/FORT GREELY, ALASKA

64°00'N-145°43'W

ALLEN AAF (PABI)

Amtd 2B 05DEC19

VOR/DME or TACAN RWY 19