

VOR FKL 109.6	APP CRS 187°	Rwy ldg TDZE 1540 Apt Elev 1540
-------------------------	------------------------	---

VOR RWY 21

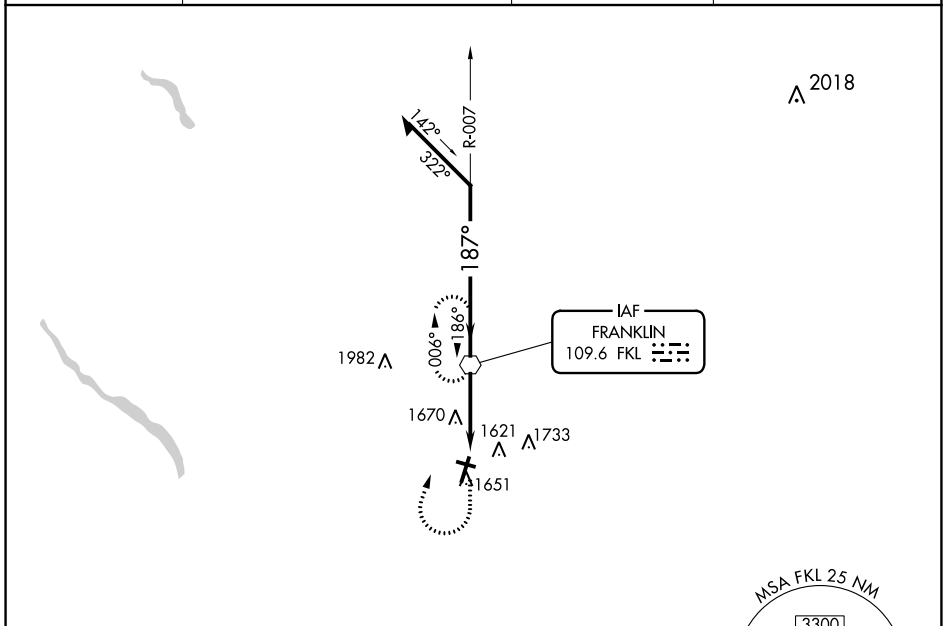
VENANGO RGNL (F'KL)

⚠ Inop table does not apply. When local altimeter setting not received, use Port Meadville altimeter setting and increase all MDA 80 feet and S-21 Cats C/D visibility $\frac{3}{8}$ mile. Circling Rwy 12 NA at night. Rwy 12 helicopter visibility reduction below 1 SM NA.

MALSR
AS

MISSED APPROACH: Climb to 2200, then climbing right turn to 3300 direct FKL VOR and hold.

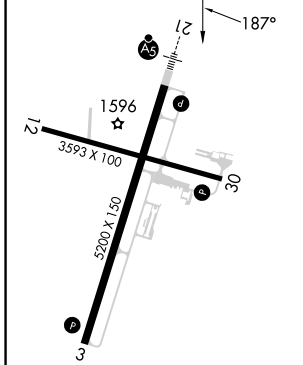
AWOS-3PT 118.175	YOUNGSTOWN APP CON ★ 126.25 322.3	CLNC DEL 126.25	UNICOM 122.7 (CTAF) U
----------------------------	---	---------------------------	--



NE-4, 13 JUN 2024 to 11 JUL 2024

NE-4, 13 JUN 2024 to 11 JUL 2024

ELEV 1540	D	TDZE 1540
-----------	----------	-----------



MIRL Rwy 12-30 **U**
HIRL Rwy 3-21 **U**



2200	3300	FKL	FKL VOR	Remain within 10 NM
↑	↷	⬡	⬡	
		3.13°	2700	007°
		3.3 NM	187°	3200

FAF to MAP 3.3 NM				
CATEGORY	A	B	C	D
S-21	1920-1 380 (400-1)			
CIRCLING	1960-1 420 (500-1)	2000-1 460 (500-1)	2040-1½ 500 (500-1½)	2100-2 560 (600-2)