

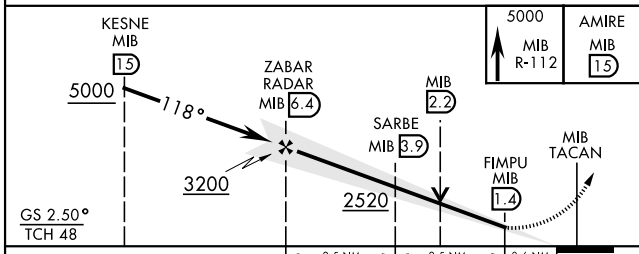
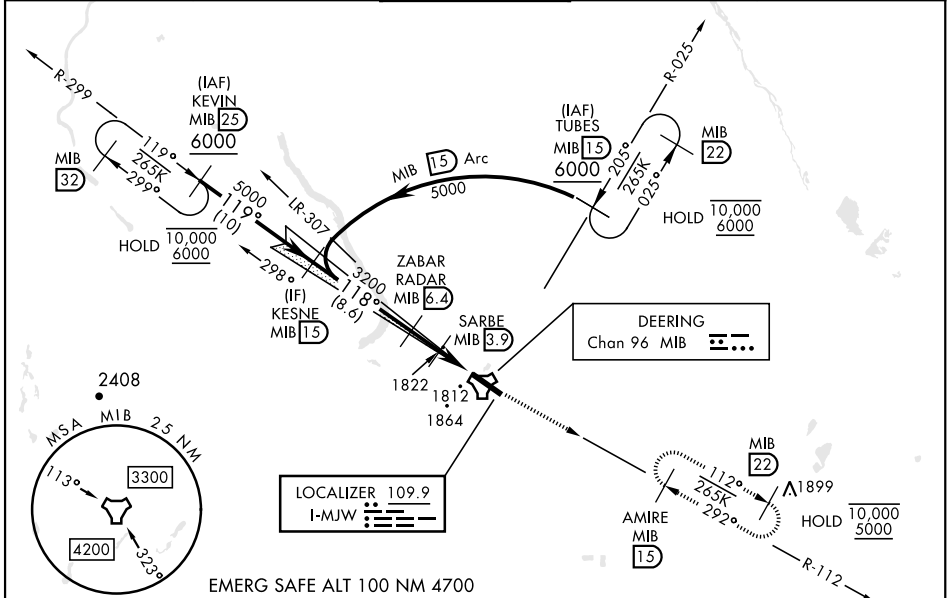
ILS or LOC Y RWY 12

| | | |
|---------------------------|-------------------------|---|
| LOC I-MJW 109.9 | APCH CRS 118° | Rwy Idg 13,198 TDZE 1666 Arprt Elev 1666 |
|---------------------------|-------------------------|---|

[USAF]

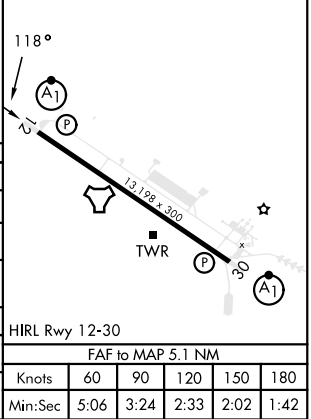
MINOT AFB (KMIB)

| | | | | | |
|---|--|------------------------------------|--|---|--|
| RADAR or DME required. | | ALSF-1 A1 | | MISSED APPROACH: Climb to 5000 via MIB TACAN R-112 direct AMIRE and hold. | |
| * When ALS inop, increase RVR to 40 and vis to 3/4 mile. ** When ALS inop, increase CAT AB RVR to 55 and vis to 1 mile; CAT CDE RVR to 60, vis to 1 1/2 miles. *** When ALS inop, increase CAT AB RVR to 55, vis to 1 mile, CAT CDE vis to 1 1/2 miles. **** Circling not authorized N of Rwy 12-30. | | ATIS 278.8 | | MINOT APP CON 119.6 363.8 | |
| | | MINOT TOWER 120.65 253.5 | | GND CON 134.0 275.8 | |
| | | | | CLNC DEL 326.2 | |



| | | | |
|------|------|------|------|
| ELEV | 1666 | TDZE | 1666 |
|------|------|------|------|

| CATEGORY | A | B | C | D | E |
|---|-----------------------|-----------------------|-------------------------------|-----------------------|-------------------------------|
| S-ILS 12* | 1866/24 | | 200 | (200-1/2) | |
| S-LOC 12** | 2080/24 | 414 (500-1/2) | 2080/40 | 414 | (500-3/4) |
| CIRCLING**** | 2120-1 454 (500-1) | 2140-1 474 (500-1) | 2180-1 1/2 514 (600-1 1/2) | 2320-2 654 (700-2) | 2320-2 1/4 654 (700-2 1/4) |
| LOCAL ALTIMETER WITHOUT LAST STEPDOWN FIX | | | | | |
| S-LOC 12*** | 2200/24 | 534 (600-1/2) | 2200/55 | 534 | (600-1) |
| CIRCLING**** | 2200-1 | 534 (600-1) | 2200-1 1/2 534 (600-1 1/2) | 2320-2 654 (700-2) | 2320-2 1/4 654 (700-2 1/4) |



ILS or LOC Y RWY 12

NC-1, 13 JUN 2024 to 11 JUL 2024

NC-1, 13 JUN 2024 to 11 JUL 2024