

WAAS CH <b>58315</b> <b>W23A</b>	APP CRS <b>233°</b>	Rwy Idg <b>7000</b> TDZE <b>612</b> Apt Elev <b>612</b>
--	------------------------	---

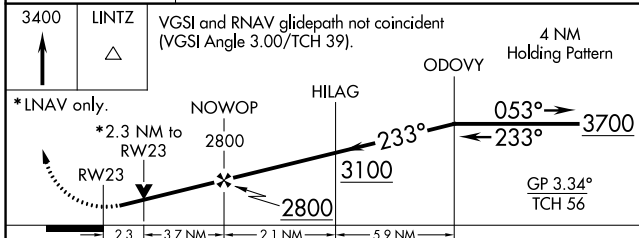
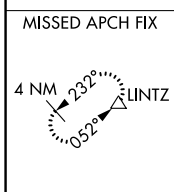
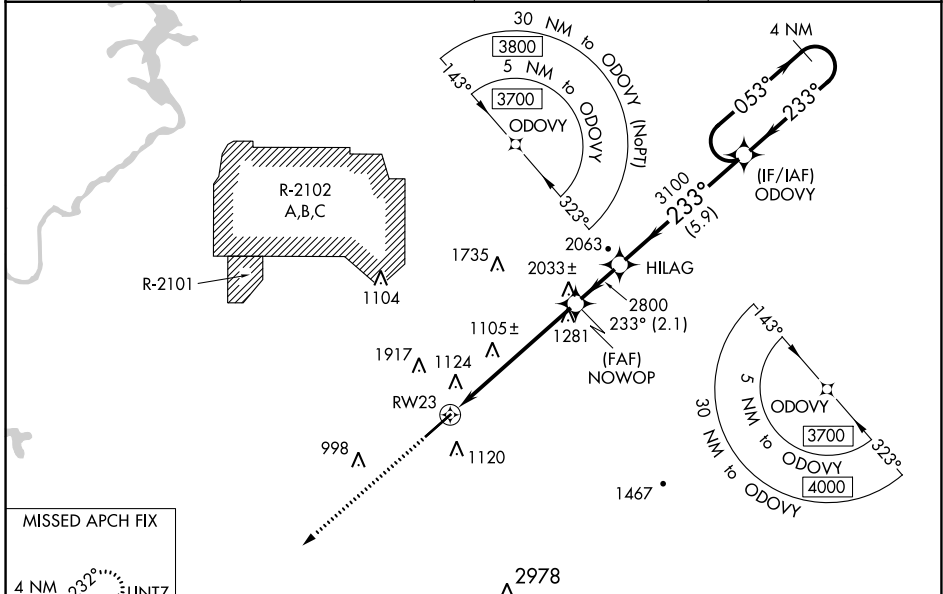
# RNAV (GPS) RWY 23

ANNISTON RGNL (ANB)

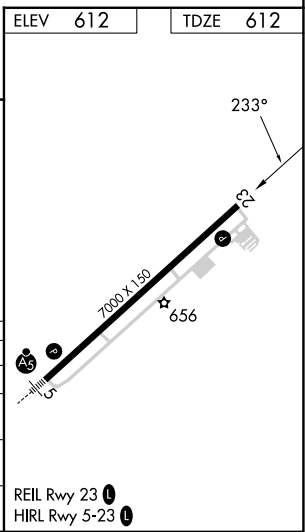
**⚠** For uncompensated Baro-VNAV systems, LNAV/VNAV NA below -8°C (18°F) or above 54°C (130°F). Circling NA north of Rwy 5-23. Rwy 23 helicopter visibility reduction below 3/4 NA. DME/DME RNP-0.3 NA. When local altimeter setting not received, use Gadsden altimeter setting: increase all DA 66 feet and all visibilities 1/2 SM; increase all MDAs 80 feet and Circling Cat A and C visibilities 1/4 SM. Baro-VNAV and VDP NA when using Gadsden altimeter setting.

**MISSED APPROACH:**  
Climb to 3400 direct LINTZ and hold.

ASOS <b>119.675</b>	BIRMINGHAM APP CON <b>132.15 285.45</b>	CTAF <b>123.6</b>	UNICOM <b>123.0</b>
------------------------	--	----------------------	------------------------



CATEGORY	A	B	C	D
LPV DA	952-1	340 (400-1)		NA
LNAV/VNAV DA	1274-2	662 (700-2)		NA
LNAV MDA	1380-1 768 (800-1)	1380-1 1/4 768 (800-1 1/4)	1380-2 1/2	768 (800-2 1/2)
<b>C</b> CIRCLING	1420-1 808 (900-1)	1420-1 1/4 808 (900-1 1/4)	1420-2 1/2 808 (900-2 1/2)	1820-3 1208 (1300-3)



SE-4, 13 JUN 2024 to 11 JUL 2024

SE-4, 13 JUN 2024 to 11 JUL 2024