

WAAS CH <b>78106</b> <b>W05A</b>	APP CRS <b>052°</b>	Rwy Idg TDZE Apt Elev	<b>7000</b> <b>595</b> <b>612</b>
--	------------------------	-----------------------------	---

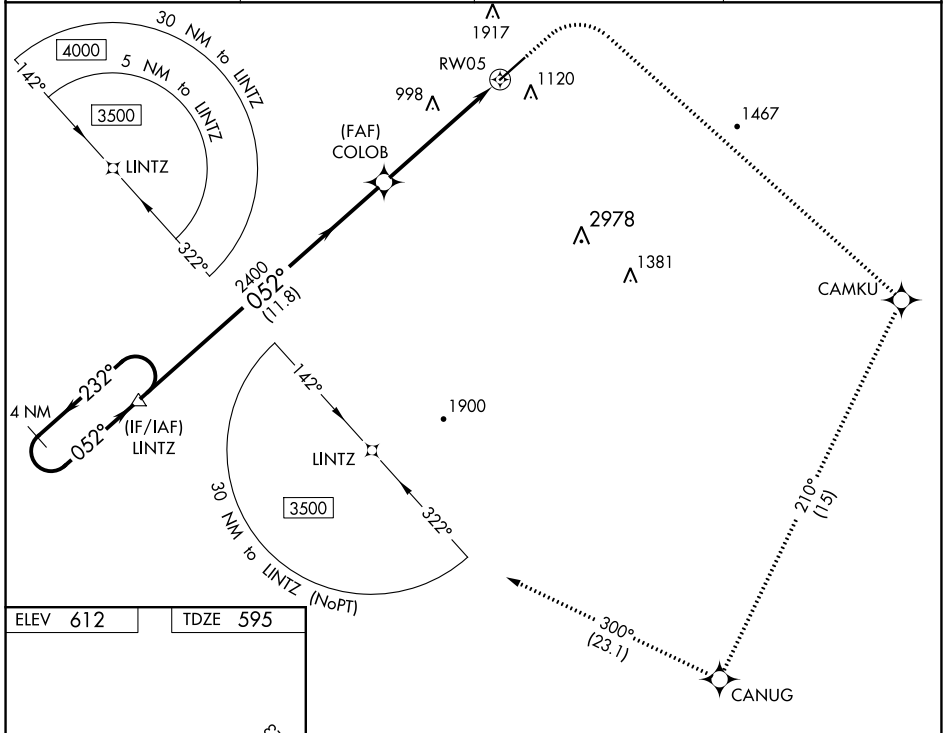
# RNAV (GPS) RWY 5

ANNISTON RGNL (ANB)

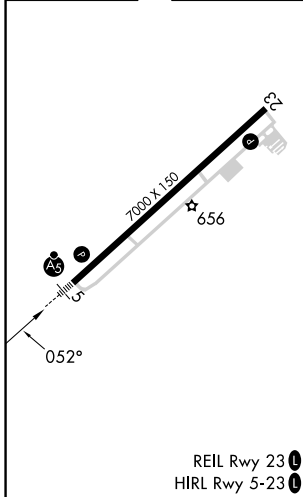
**⚠** Circling NA North of Rwy 5-23. DME/DME RNP-0.3 NA. When local altimeter setting not received, use Gadsden altimeter setting and increase all DA 66 feet and all MDA 80 feet and LPV all Cats, LNAV Cats C and D and Circling Cats A, B, and C visibility ¼ SM. For inop ALS increase LPV all Cats visibility to 1 SM. For inop ALS when using Gadsden altimeter setting, increase LPV all Cats visibility to 1½ SM. VDP NA with Gadsden altimeter setting.

**MALSR** MISSED APPROACH: Climb to 1600, then climbing right turn to 3500 direct CAMKU and track 210° to CANUG and track 300° to LINTZ and hold.

ASOS <b>119.675</b>	BIRMINGHAM APP CON <b>132.15 285.45</b>	CTAF <b>123.60</b>	UNICOM <b>123.0</b>
------------------------	--	-----------------------	------------------------



ELEV 612	TDZE 595
----------	----------



4 NM Holding Pattern	LINTZ	1600	3500	CAMKU	tr 210°	CANUG	tr 300°	LINTZ
3500	← 232°	052° →	052°	COLOB	2400	*1.7 NM to RW05	*LNAV only.	RW05
GP 3.00°	TCH 40		2400					
			11.8 NM	3.9 NM	1.7 NM			
CATEGORY	A	B	C	D				
LPV DA	909-5/8 314 (300-5/8)							
LNAV MDA	1160-1/2	565 (600-1/2)	1160-1/4	565 (600-1/4)				
<input checked="" type="checkbox"/> CIRCLING	1420-1808 (900-1)		1420-2 1/4 808 (900-2 1/4)	1820-3 1208 (1300-3)				