

APP CRS	Rwy Idg	3725
300°	TDZE	644
	Apt Elev	647

RNAV (GPS) RWY 30

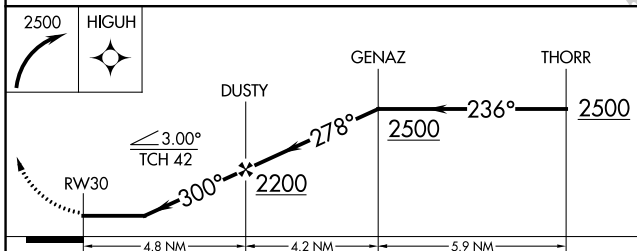
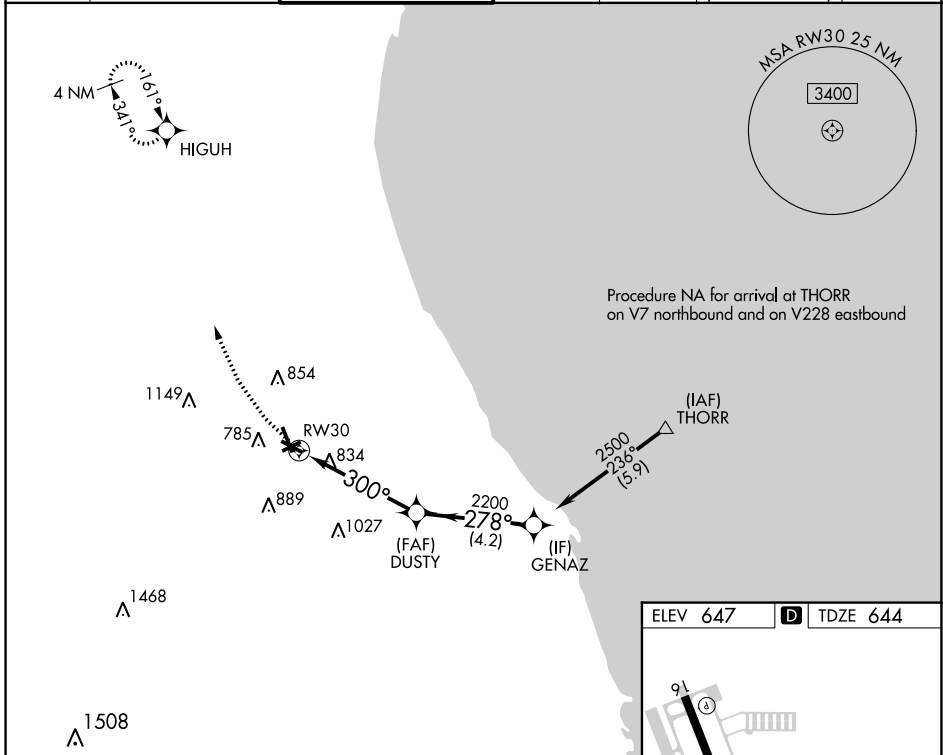
CHICAGO EXEC (PWK)

RNP APCH - GPS.

- ▼** Circling Rwy 6, 12, 24, 30 NA at night.
- ▲** Rwy 30 Straight-in procedure NA at night.
- Rwy 30 helicopter visibility reduction below 1 SM NA.

MISSED APPROACH: Climbing right turn to 2500 direct HIGUH and hold.

ATIS 124.2	CHICAGO APP CON 120.55 306.925	EXECUTIVE TOWER ★ 119.9 (CTAF) 0	GND CON 121.7	CLNC DEL 124.7	CLNC DEL 124.7 (When twr closed)	UNICOM 122.95
----------------------	------------------------------------------	--------------------------------------------	-------------------------	--------------------------	-----------------------------------------------	-------------------------



ELEV 647	D TDZE 644
----------	-------------------

HIRL Rwy 6-24 and 16-34 **0**
 MIRL Rwy 12-30 **0**
 REIL Rws 12 and 30
 REIL Rws 16 and 34 **0**
 RLLS Rwy 16 **0**

EC-3, 13 JUN 2024 to 11 JUL 2024

EC-3, 13 JUN 2024 to 11 JUL 2024