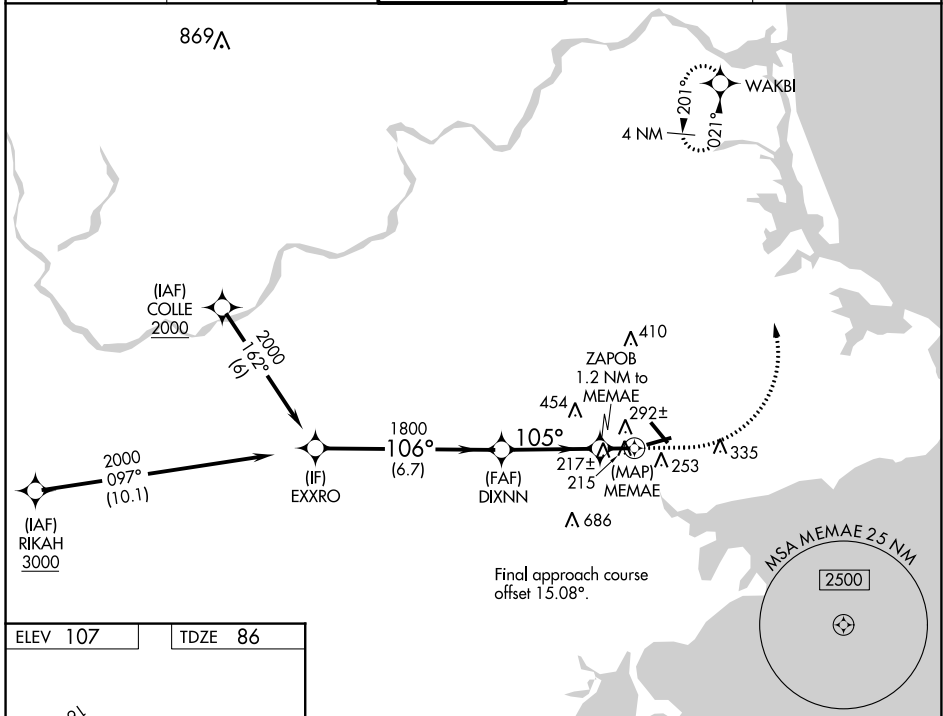


WAAS CH <b>65640</b> <b>W09A</b>	APP CRS <b>105°</b>	Rwy Idg TDZE Apt Elev	<b>4755</b> <b>86</b> <b>107</b>
--	------------------------	-----------------------------	--

# RNAV (GPS) RWY 9

BEVERLY RGNL (BVY)

RNP APCH - GPS.		MISSED APPROACH: Climb to 600 then climbing left turn to 2000 direct WAKBI and hold.		
<p>▼ Rwy 9 helicopter visibility reduction below 1 SM NA. ▲ Straight-in Rwy 9 NA at night, Circling Rwy 9 NA at night.</p>				
ATIS <b>119.2</b>	BOSTON APP CON <b>124.4 279.6</b>	BEVERLY TOWER★ <b>125.2 (CTAF) 0</b>	GND CON <b>121.6</b>	UNICOM <b>122.95</b>



NE-1, 13 JUN 2024 to 11 JUL 2024

NE-1, 13 JUN 2024 to 11 JUL 2024

