

LOC/DME I-VSF <b>111.3</b> Chan <b>50</b>	APP CRS <b>051°</b>	Rwy ldg TDZE Apt Elev <b>5101</b> <b>575</b> <b>578</b>
---	------------------------	--

# LOC RWY 5

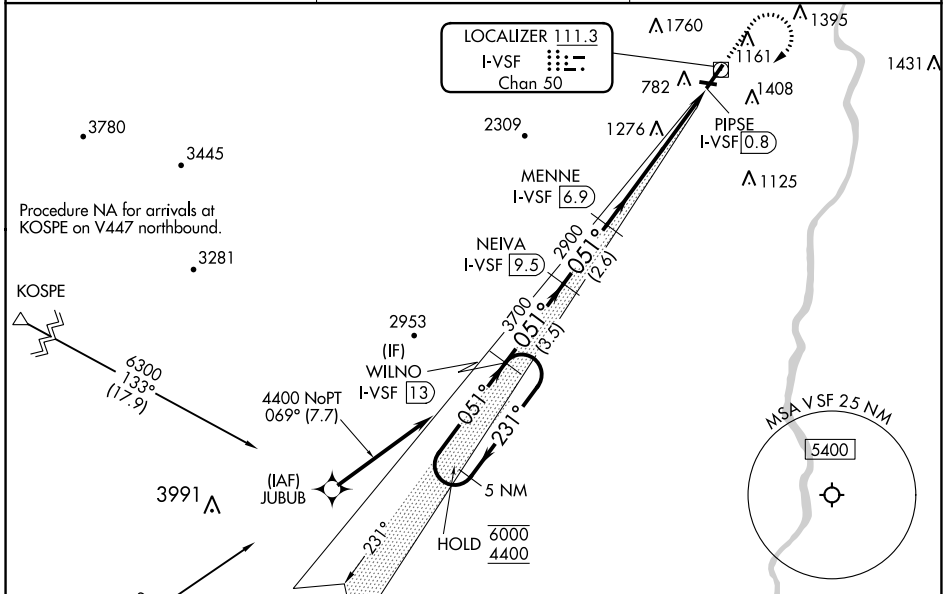
HARTNESS STATE (SPRINGFIELD) (V'SF')

DME required.  
RNAV 1-GPS required.

**NA**  
Rwy 5 helicopter visibility reduction below 3/4 SM NA.  
Circling to Rwy 11, 23, 29 NA at night.

MISSED APPROACH: Climb to 2000 then climbing right turn to 4400 direct WILNO/13 DME and hold.

ASOS <b>121.425</b>	BOSTON CENTER <b>134.7 269.475</b>	UNICOM <b>122.8</b> (CTAF)
------------------------	---------------------------------------	-------------------------------



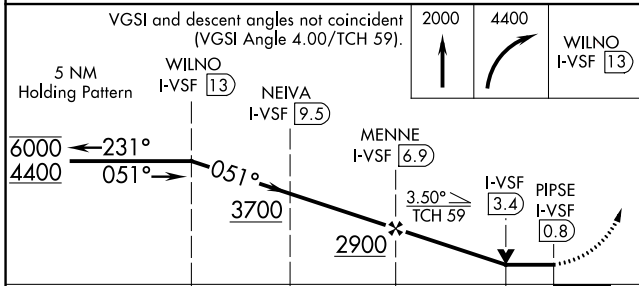
NE-1, 13 JUN 2024 to 11 JUL 2024

NE-1, 13 JUN 2024 to 11 JUL 2024

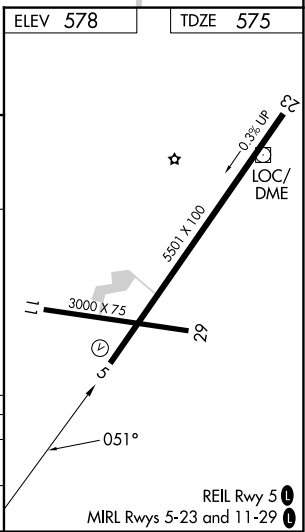
ELEV 578 | TDZE 575

Procedure NA for arrivals at KOSPE on V447 northbound.

Procedure NA for arrivals at DORIS on V490 westbound.



CATEGORY	A	B	C	D
S-5	1760-1½ 1185 (1200-1½)	1760-1½ 1185 (1200-1½)	1760-3	1185 (1200-3)
CIRCLING	1760-1½ 1182 (1200-1½)	1760-1½ 1182 (1200-1½)	2600-3	2022 (2100-3)



REIL Rwy 5  
MIRL Rws 5-23 and 11-29